

PARTS LIST

HONDA ENGINE
GX390UT2X-SCMV
FOR MIKASA PRODUCTS

WITH PRODUCT NAME

CONCRETE CUTTER
MCD-T18H-PLUS

:EXPORT

PARTS REMARK INDEX

How to read the marks and remarks used in this parts book.

Section 1 : Explanation of Code Use In “MRK” Column

OO : Interchangeable between the new part and the old one.

XX : Not Interchangeable between new and old.

OX : New part is usable for the old machine but the old part is not usable for the new machine.

XO : The old part is usable for the new machine but the new part is not usable for the old machine.

Note : In case of the lack of interchangeability between the new part and old part, a new part may be used by replacing all other parts found in the assembly. In this case, refer to section 2 for instruction on identifying other parts involved in a new assembly.

AD : Newly established (added)

DC : Suspended (discontinued)

NC : Part number changed

QC : Quantity used has been changed

NS : Not supplied individually but supplied in an assembly or a group.

AS : Special part designed to allow interchangeability between new and old part.

CR : Correction

Section 2 : Items Found In “Remark” Column

Serial Numbers — Where indicated, this indicates a serial number range (inclusive) where a particular part is used.

Model Number — Where indicated, this shows that the corresponding part is utilized only with this specific model number or model number variant.

or * : All parts with the same number following # or * belong to the same assembly. This part cannot be interchanged individually with any other assemblies to replace an old part (indicated by #), with a new part (indicated by *), then all other parts of that assembly must be replaced with new ones.

Note : If more than one of the same reference number is listed, the last one listed indicates newest (or latest) part available.

Section 3: Example

REF NO.	PART NO.	PART NAME	QTY	MRK	REMARKS
457(1)	5122-09230	Hinge Metal, Upper/24g	1		-1070 #3 (5)
457(2)	5072-09420	Hinge Metal, Upper M16	1	OX(3)	U1071-(6) * 3(7)

(1) Old part

(2) New part

(3) New part usable with old machine, but old part not usable with new machine (reference section 1).

(4) Old part number is used through this machine serial number.

(5) Old part, used in an assembly with other parts marked with #3. To use this part on a new machine, all other parts in this assembly must be replaced with old ones.

(6) New part put into use starting with this serial number and is still current.

(7) New part used in an assembly with other parts marked *3, to use this part as a replacement for an old part, all other *3 marked parts must be changed at the same time.

Section 4: Items Found In “MK2” Column

(only for suspended products)

! OO (“OO” is shown in figure) : The part shown in lower line is supplied.

! SD : Not available due to termination of production.

! NS : Not supplied individually, but supplied in an assembly or a group.

! PD : Supplied as unit product.

SS : Not available after stock run out.

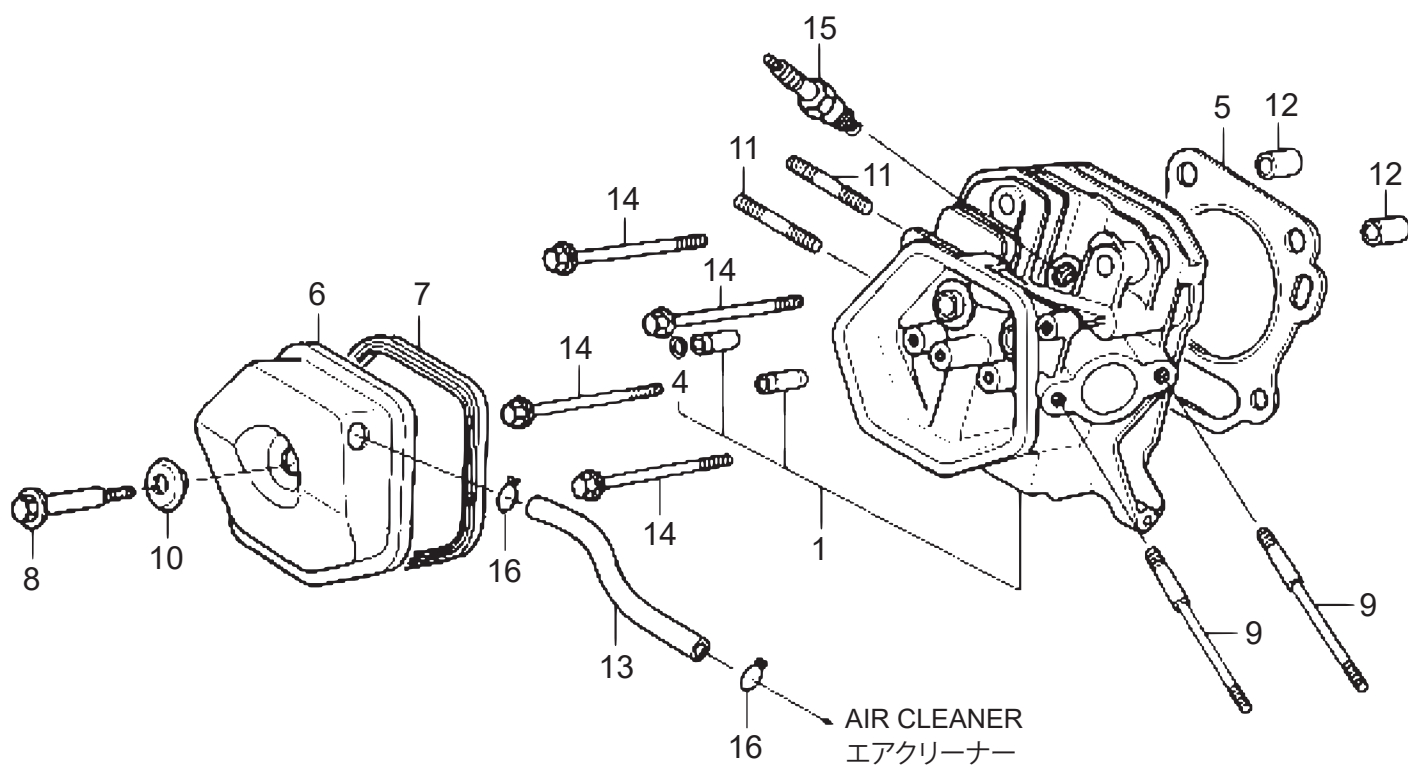
(The contents of this parts catalog are subject to change without notice.)

GX390UT2X-SCM1

DNV0

CYLINDER HEAD

シリンダーヘッド



FR. →

CYLINDER HEAD

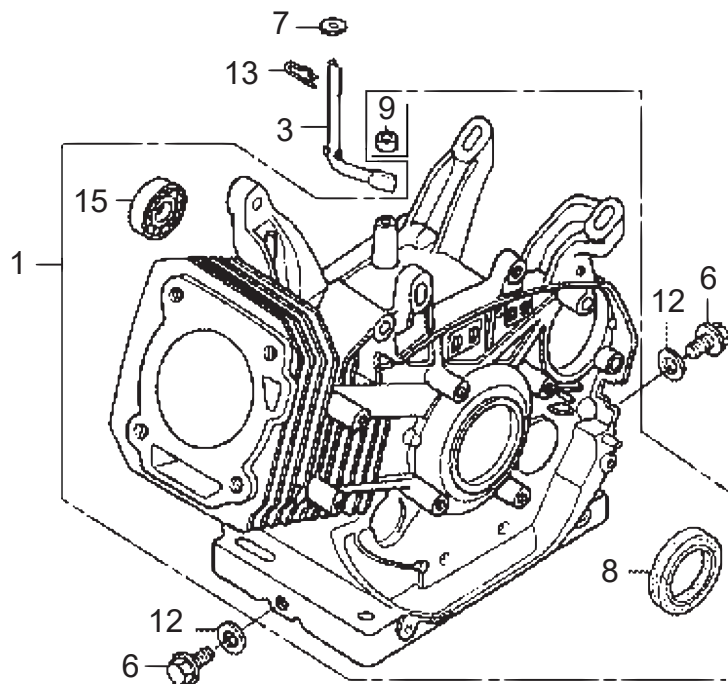
**** DNV ****

[illegible]

GX390UT2X-SCMV

DQJ0

CYLINDER BARREL / シリンダーバレル



FR. →

CYLINDER BARREL

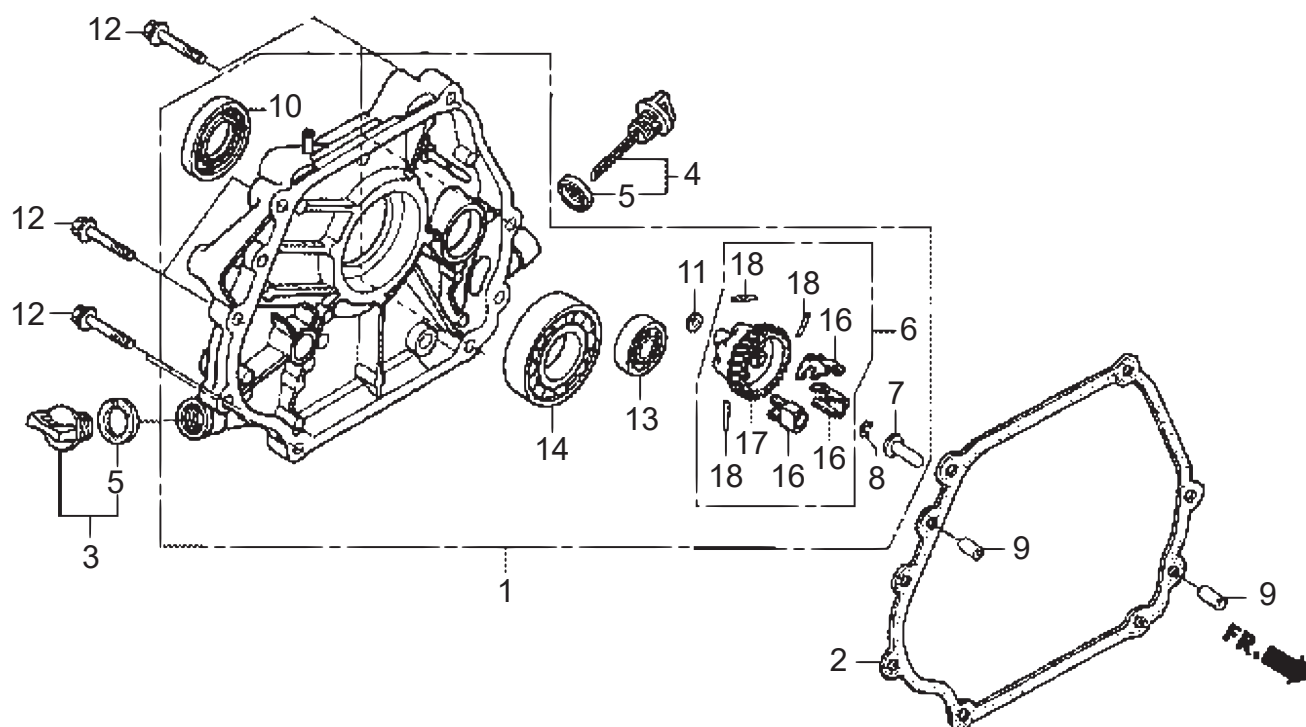
**** DQJ ****

[illegible]

GX390T2-SH MV

DPV0

CRANKCASE COVER / クランクケースカバー



GX390UT2X-SCMV
CRANK CASE COVER

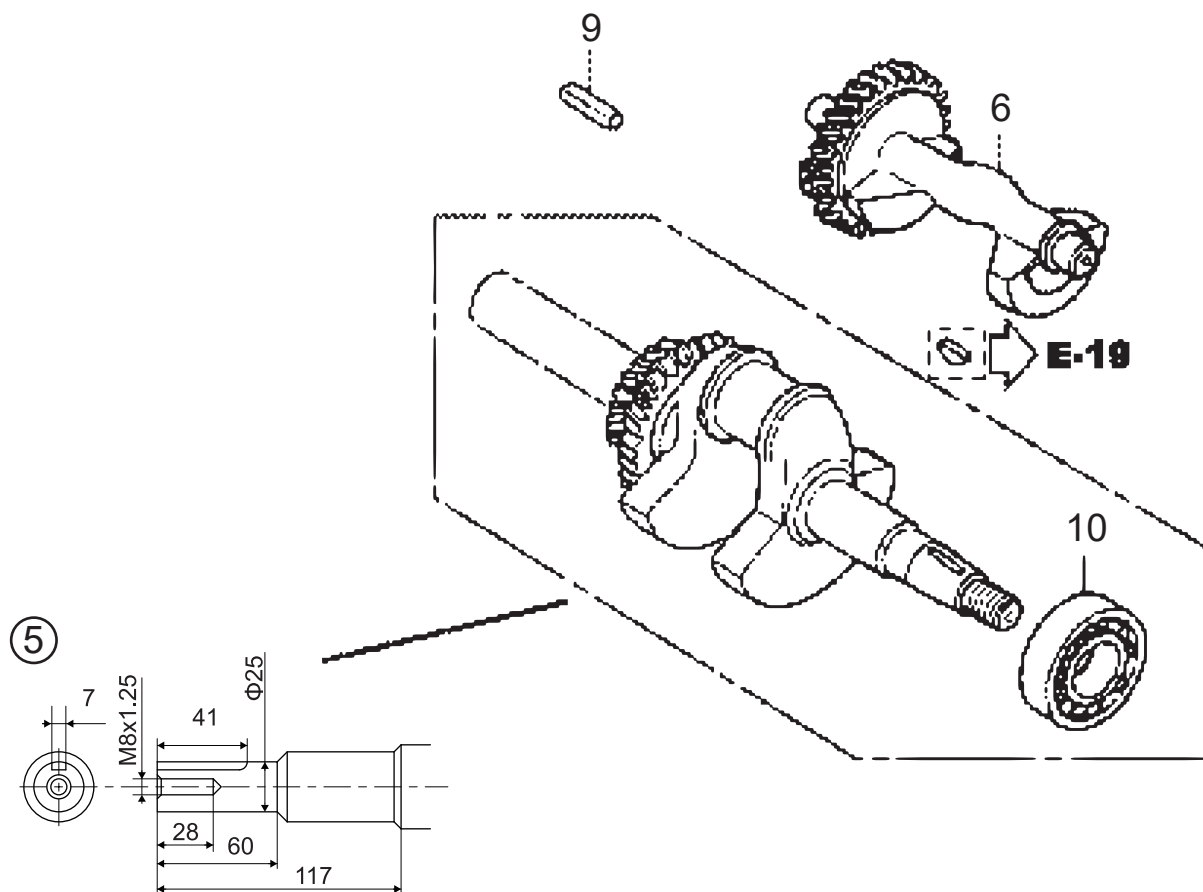
**** DPV ****

[illegible]

GX390T2-SHMV

DPW0

CRANKSHAFT / クランクシャフト



FR.

CRANK SHAFT

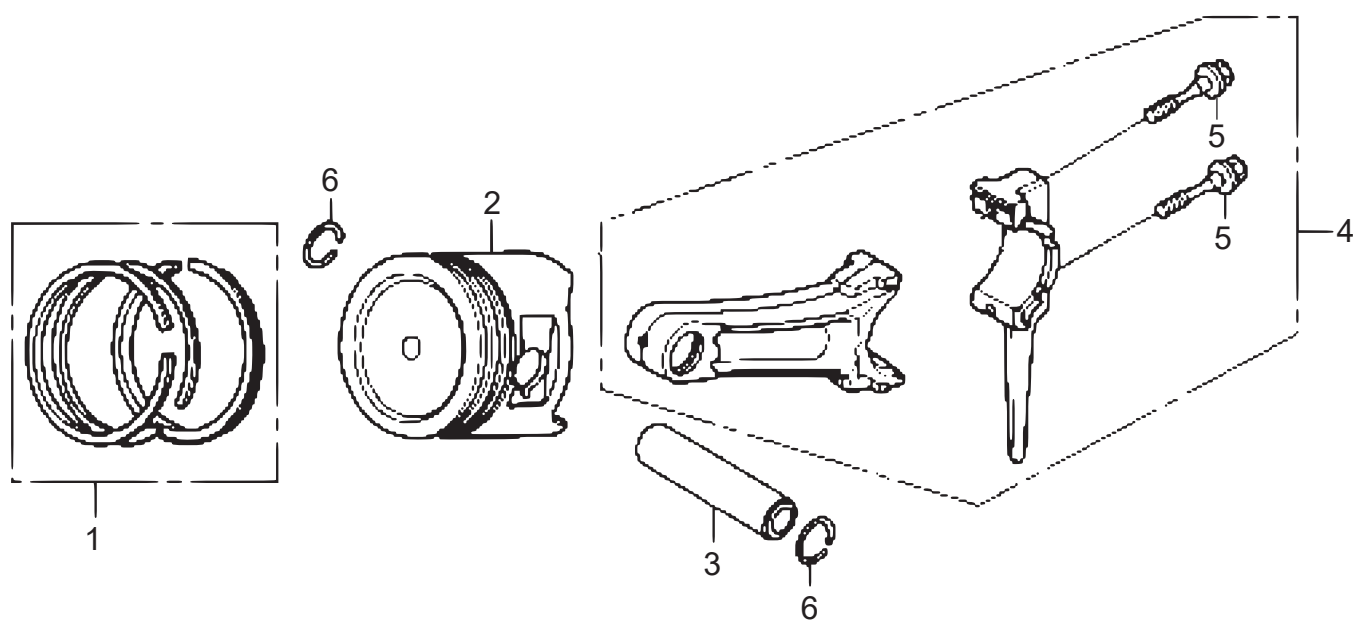
[illegible]

GX390UT2X-SCM1

DNZ0

PISTON

ピストン



PISTON

**** DNZ ****

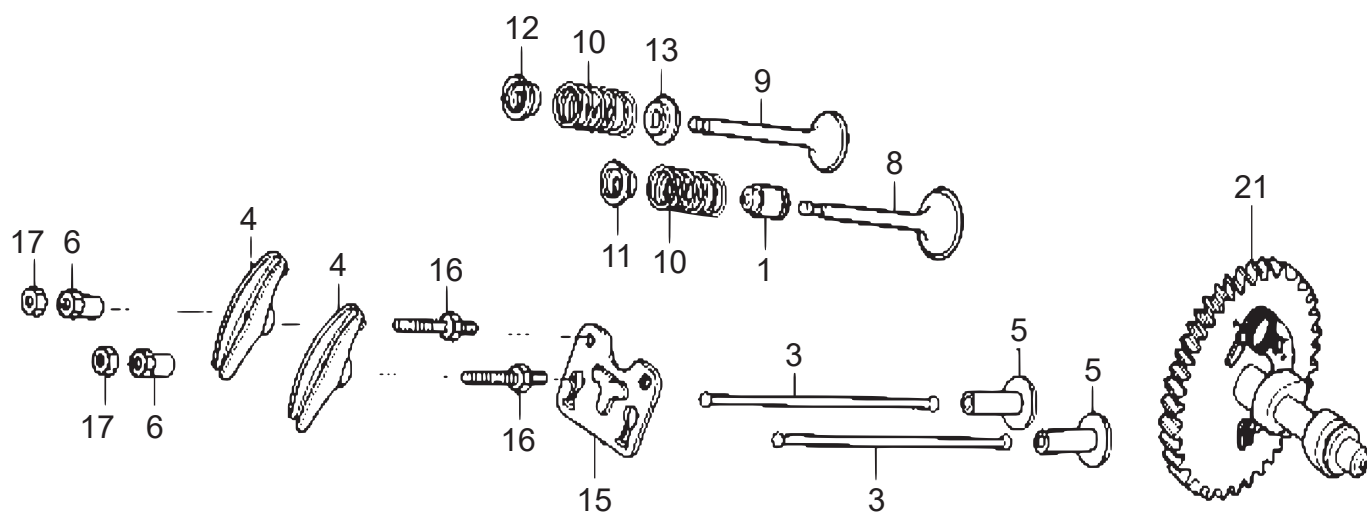
[illegible]

GX390UT2X-SCM1

DOA0

CAMSHAFT

カムシャフト



FR. ➡

CAMSHAFT

**** DOA ****

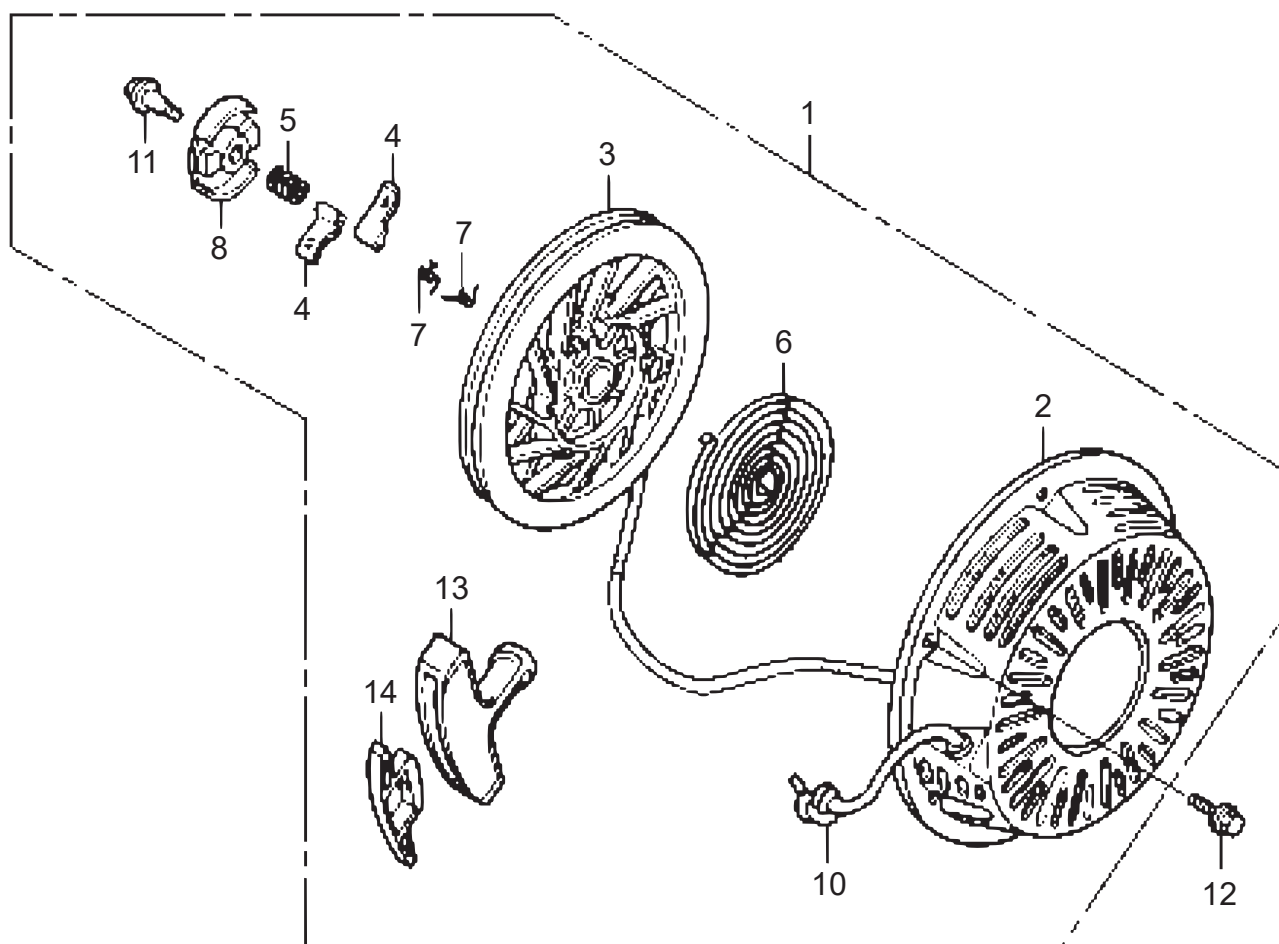
[illegible]

GX390UT2X-SCM1

DOB0

RECOIL STARTER

リコイルスターター



FR. 

Z5T0E11008

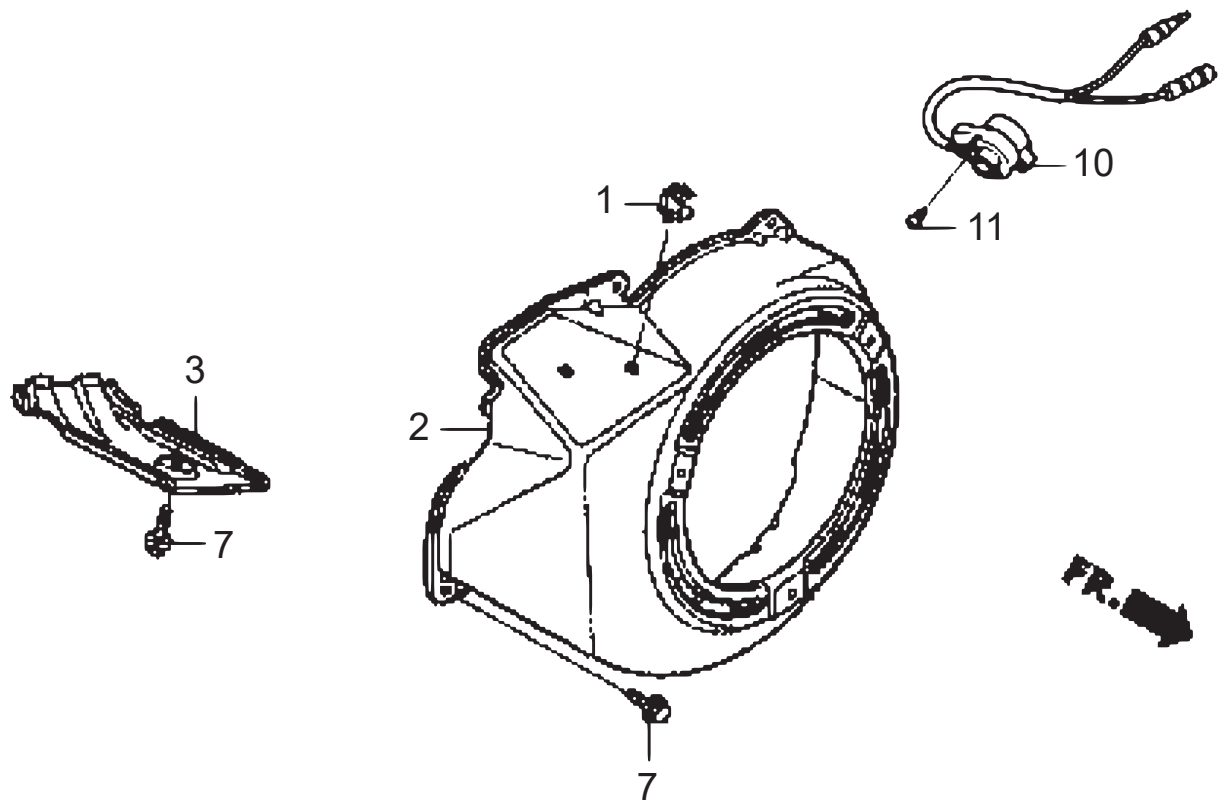
RECOIL STARTER

[illegible]

GX390T2-SHMV

DQA0

FAN COVER / ファンカバー



FAN COVER

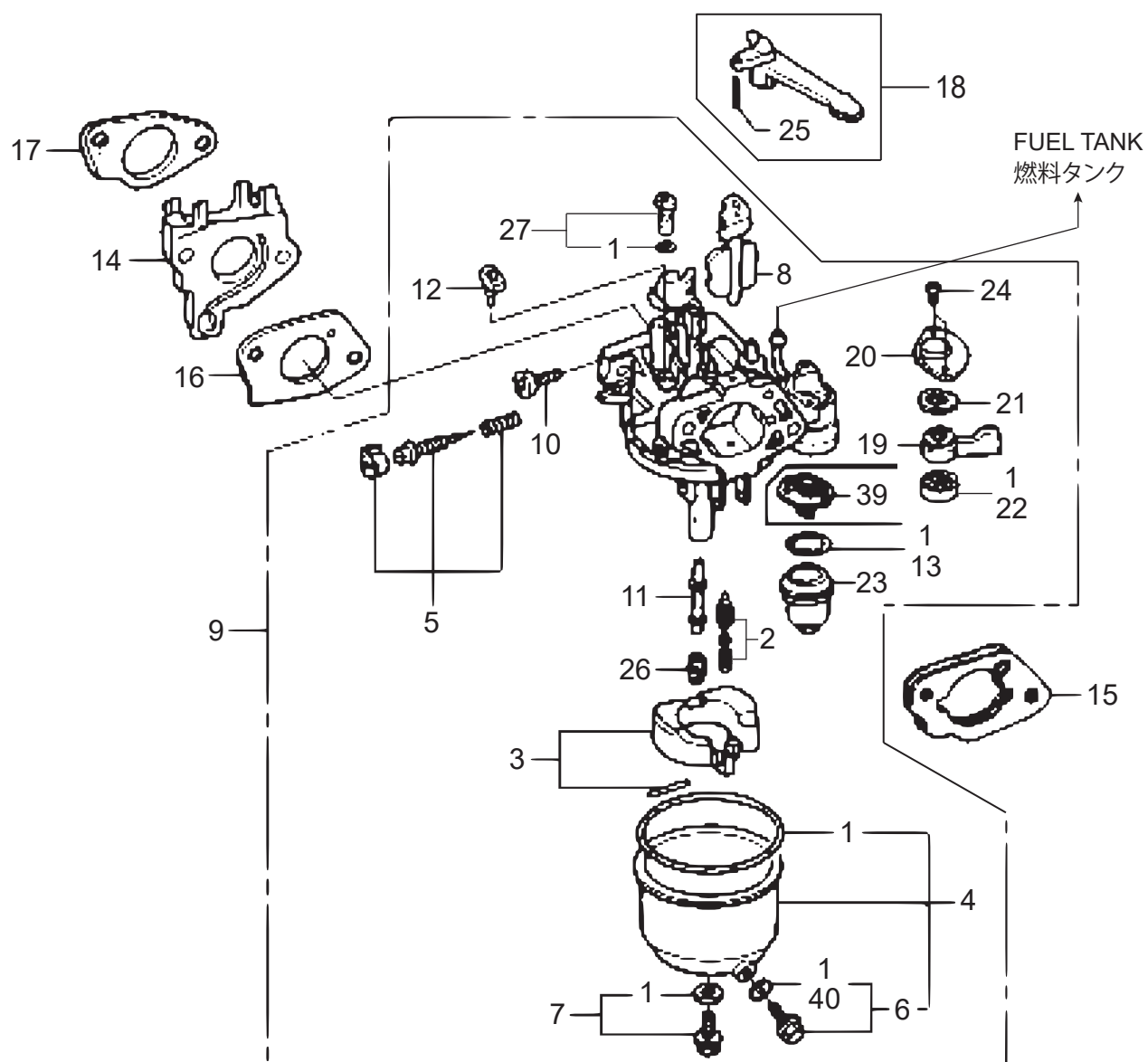
[illegible]

GX390UT2X-SCM1

DOD0

CARBURETOR

キャブレター



GX390UT2X-SCMV

CARBURETOR

**** DOD ****

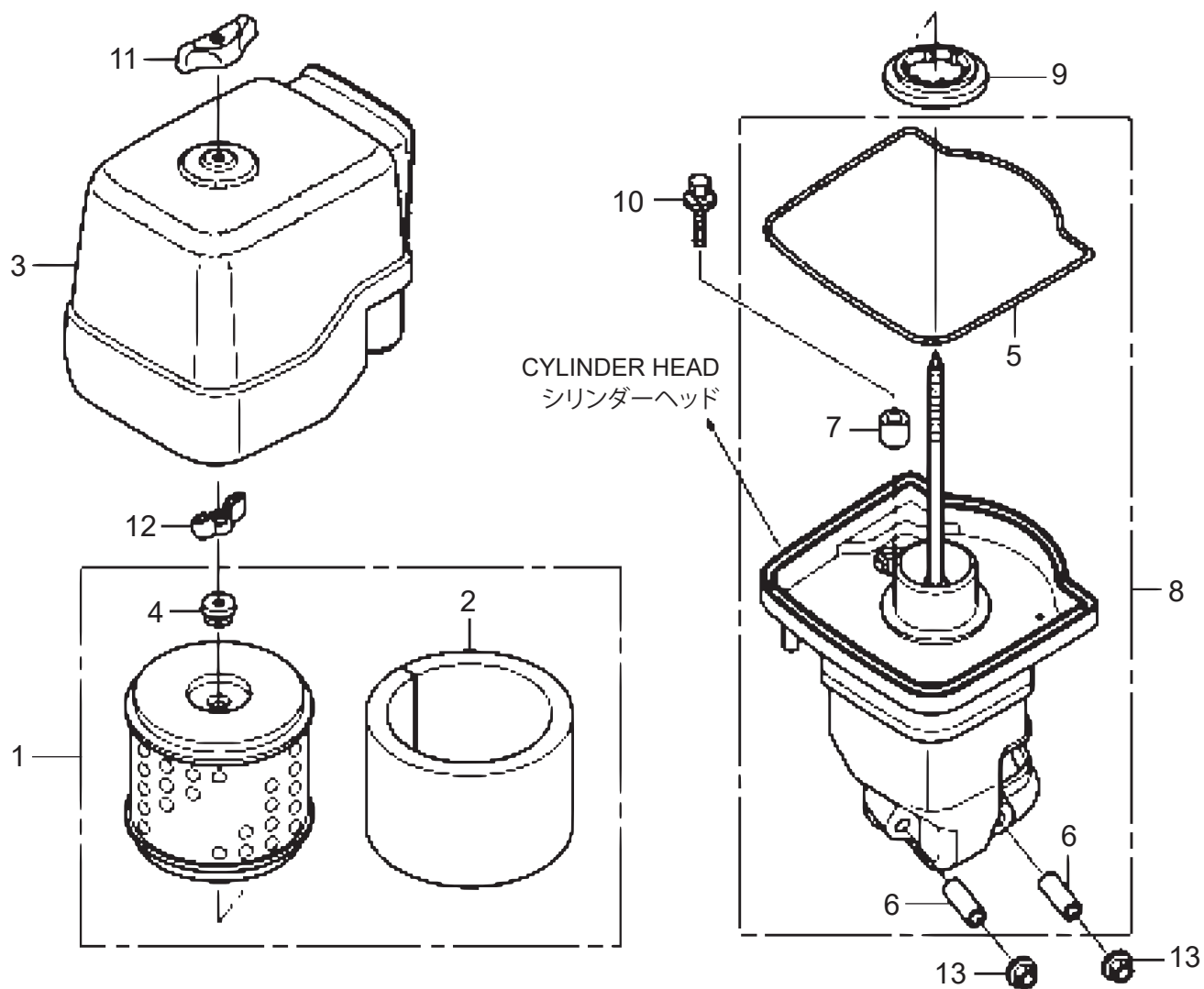
REF NO.	PART NO.	PART NAME	Q' TY	MRK	MK2	REMARKS
1	16010-ZE2-812	GASKET SET	1			
2	16011-ZA0-931	VALVE SET, FLOAT	1		0JH	
3	16013-Z1C-003	FLOAT SET	1		0JH	
4	16015-Z5T-901	CHAMBER SET, FLOAT/240U2	1		0JH	
5	16016-ZH7-W01	SCREW SET, PILOT	1			
5	16016-ZH7-W01	SCREW SET, PILOT	1			
6	16024-Z5T-901	SCREW SET, DRAIN/GX200T2	1			
7	16028-Z5T-901	SCREW SET/GX200T2	1		0JH	
8	16044-Z5T-901	CHOKE SET	1		0JH	
9	16100-Z5T-WA1	CARBURETOR AY. (BECODA)	1			
10	16124-ZE0-005	SCREW, THROTTLE STOP	1			
11	16166-Z5T-WA1	NOZZLE, MAIN/GX390UT2X-SCM1	1		0JH	
12	16172-ZE3-W10	COLLAR SET	1		0JH	
13	16173-001-004	PACKING, CUP	1			
14	16211-Z5T-000	INSULATOR, CARBURETOR	1		0JH	
15	16220-ZA0-702	SPACER COMP. , CARBURETOR	1			
16	16221-Z5T-000	PACKING, CARBURETOR	1			
17	16212-Z5T-000	PACKING, INSULATOR	1		0JH	
18	16610-ZE1-000	CHOKE LEVER COMP.	1			
19	16953-ZE1-812	LEVER, COCK	1			
20	16954-ZE1-812	PLATE, LEVER SETTING	1		0JH	
21	16956-ZE1-811	SPRING, COCK LEVER	1			
22	16957-ZE1-812	PACKING, FUEL COCK	1			
23	16967-ZE0-811	CUP, FUEL STRAINER	1			
24	93500-030060H	SCREW 3X6 / GX390	2		0JH	
25	94305-20122	SPRING PIN 2X12	1			
26	99101-ZH81150	JET, MAIN, #115	1			STD
26	99101-ZH81100	JET, MAIN, #110	1			
26	99101-ZH81120	JET, MAIN, #112	1			
27	99204-ZE00450	JET SET, PILOT, #45	1		0JH	
39	16959-Z5T-901	FILTER, CUP/GX200T2	1			
40	16141-Z0S-003	WASHER, PLAIN (6. 2) /DRAIN	1		0JH	

GX390UT2X-SCM1

DOE0

AIR CLEANER

エアクリナー



FR. →

AIR CLEANER

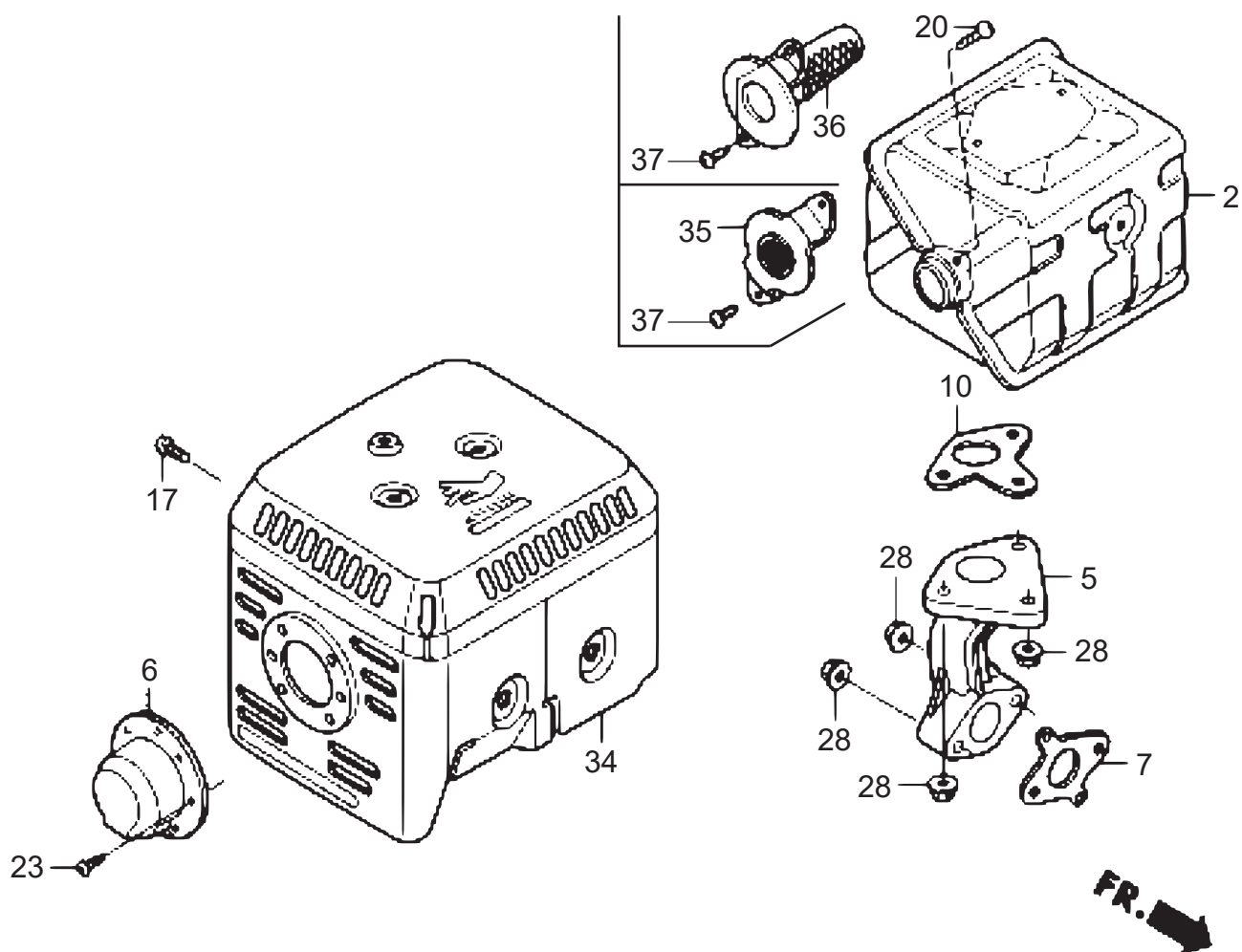
[illegible]

GX390UT2X-SCM1

DOF0

MUFFLER

マフラー



MUFFLER

**** DOF ****

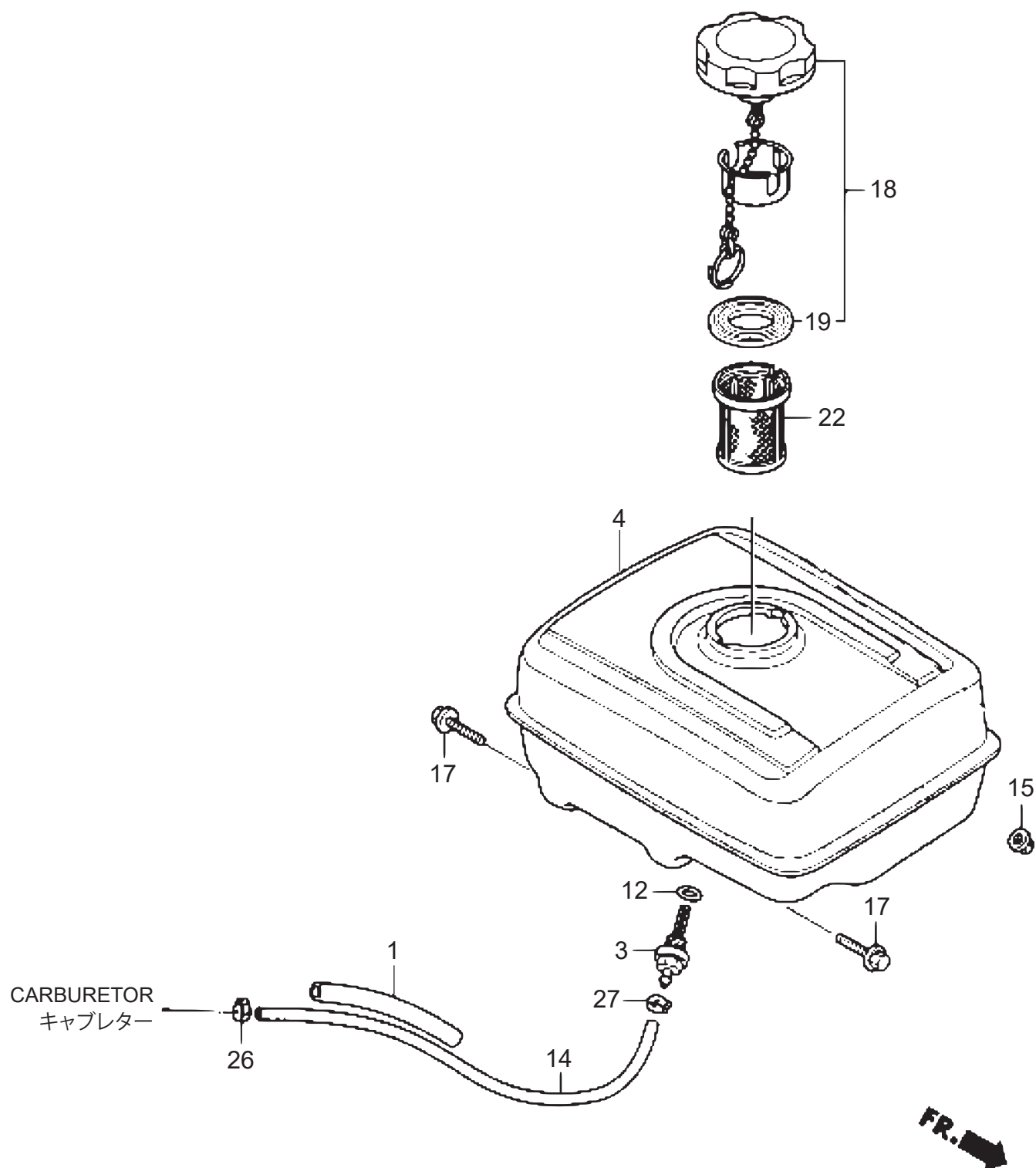
[illegible]

GX390UT2X-SCM1

DOG0

FUEL TANK

燃料タンク



FUEL TANK

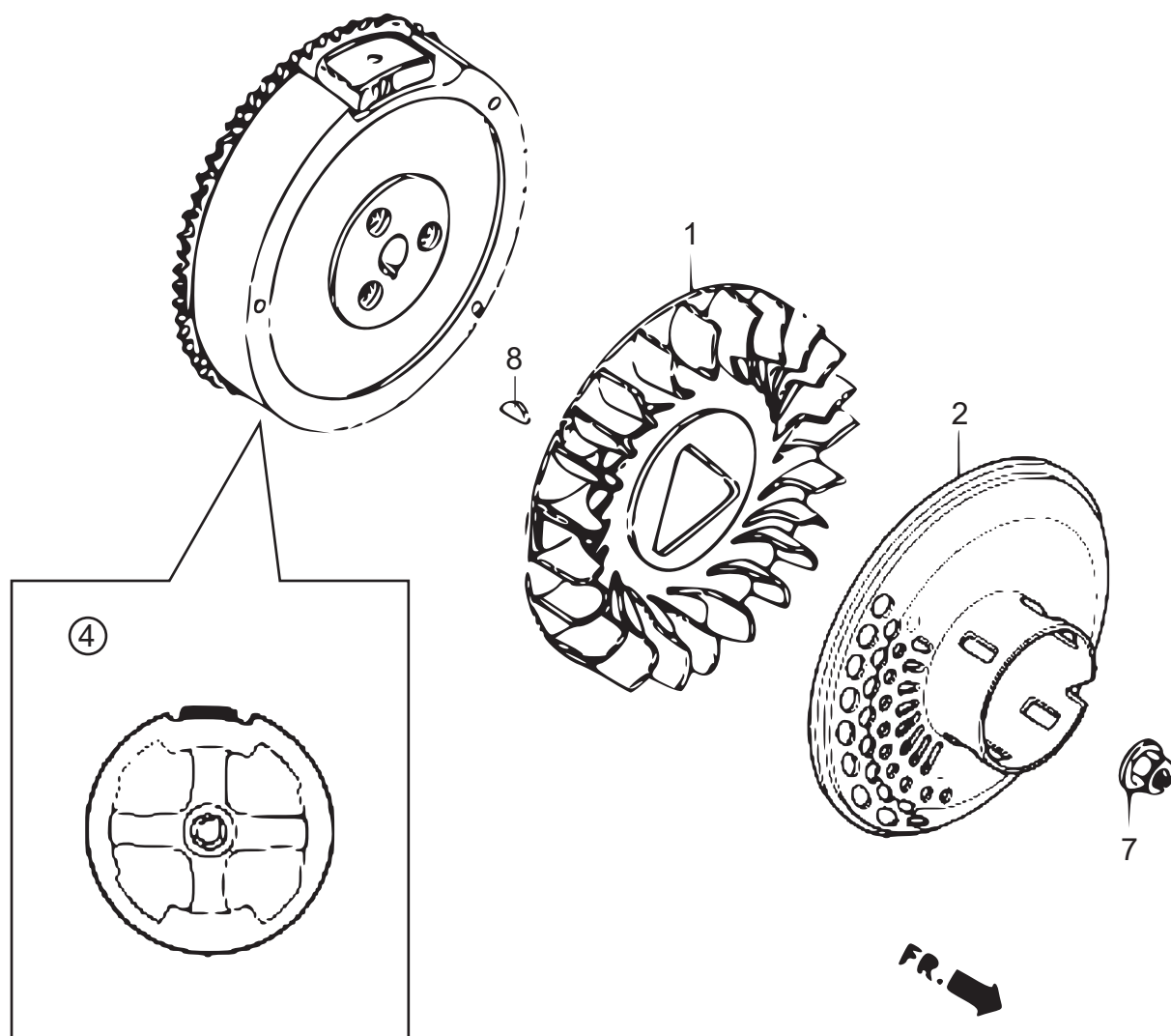
**** DOG ****

[illegible]

GX390T2-SHMV

DQF0

FLYWHEEL/ フライホイール



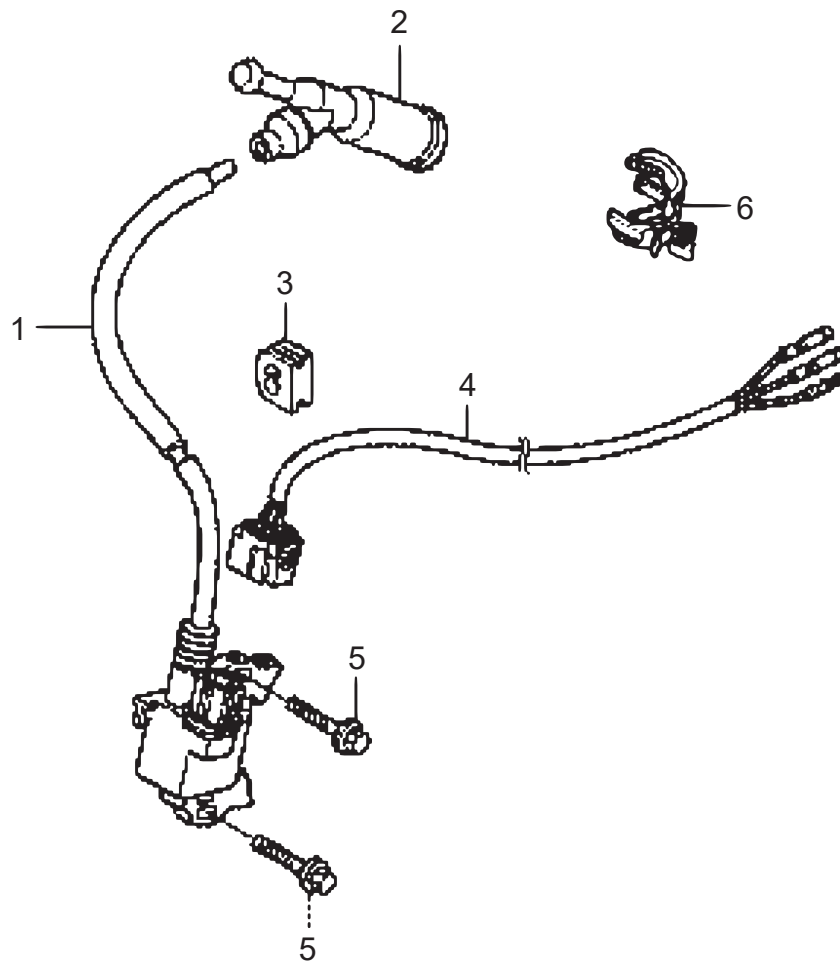
FLYWHEEL

[illegible]

GX390T2-SHMV

DQG0

IGNITION COIL / イグニッションコイル



FR. 

IGNITION COIL

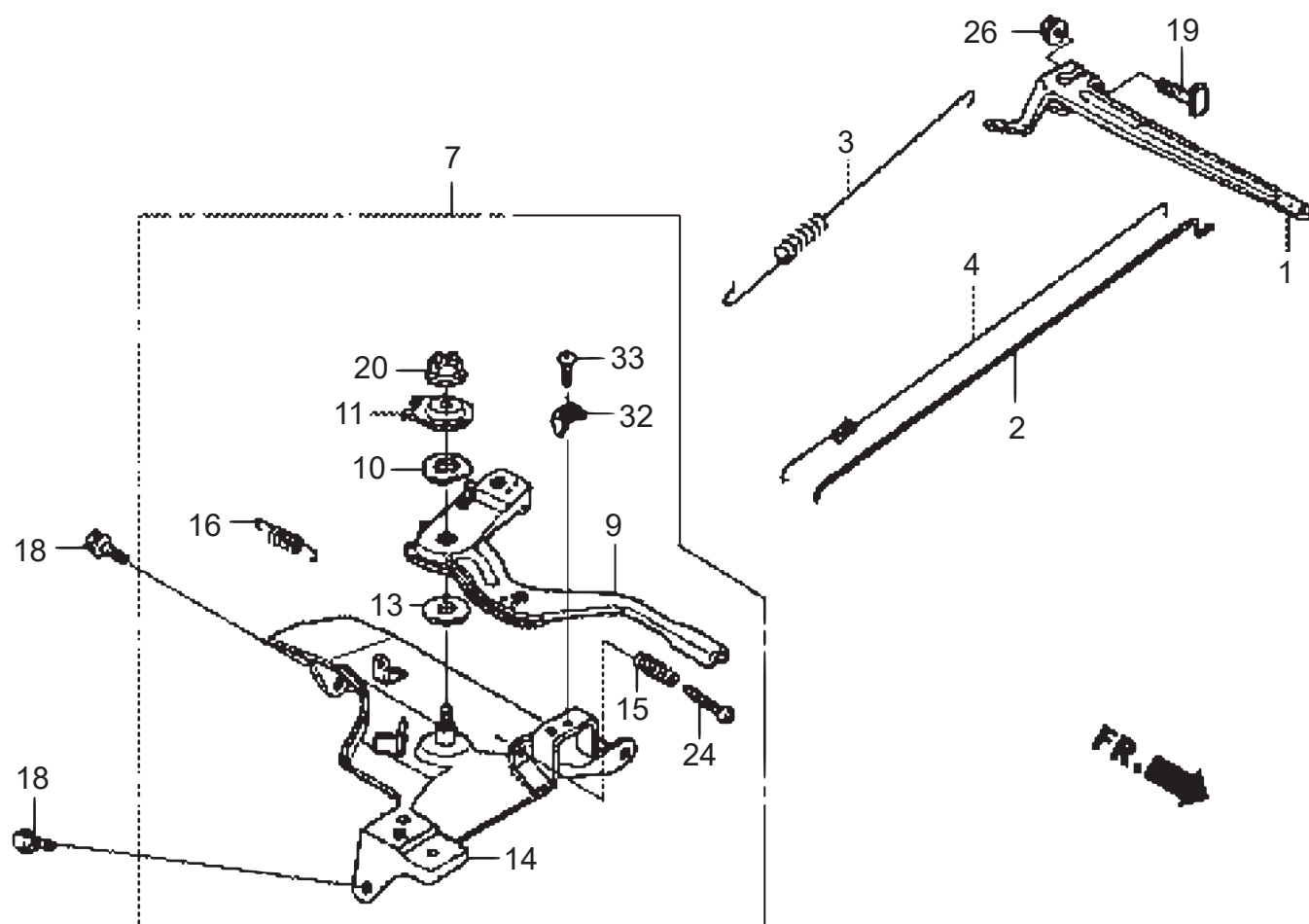
**** DQG ****

[illegible]

GX390T2-SHMOV

DQH0

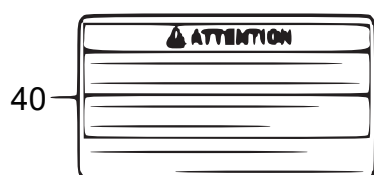
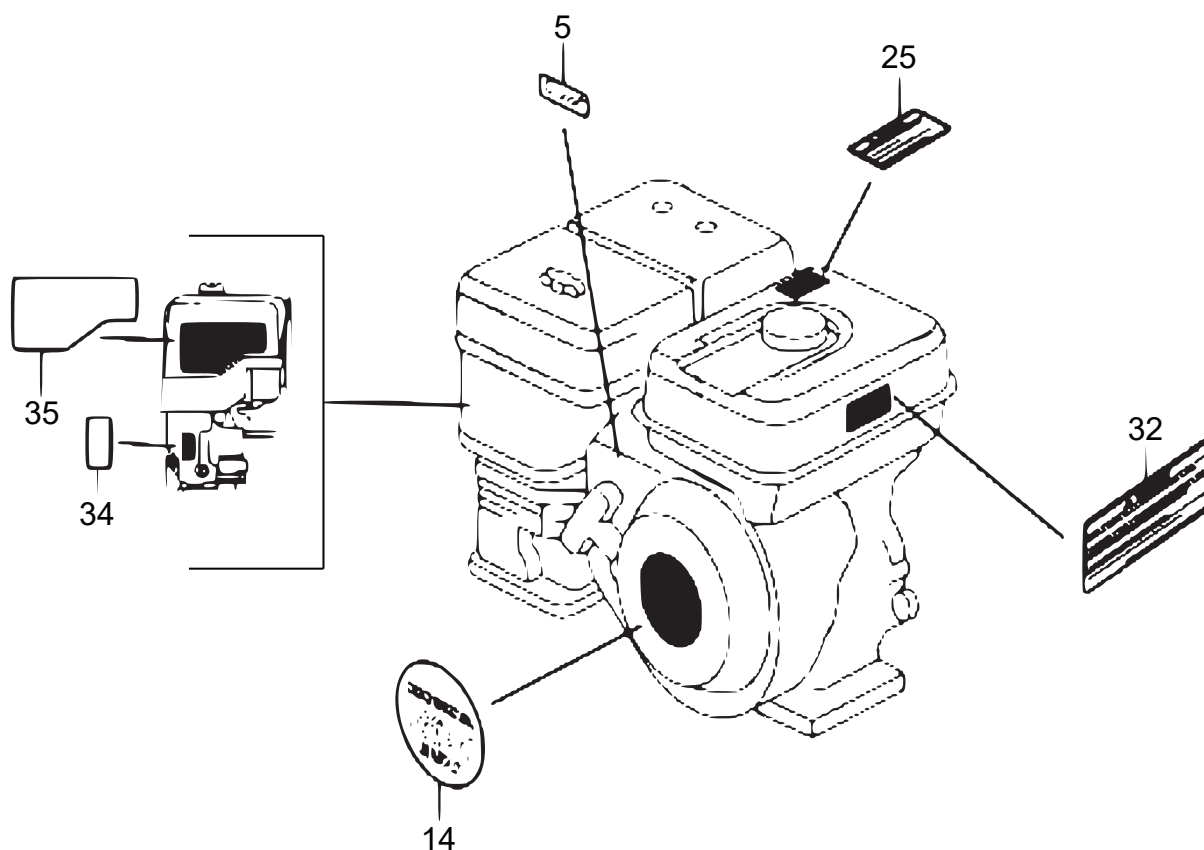
CONTROL / コントロール



CONTROL

MRK	MK2	REF
-----	-----	-----

[illegible]



LABEL

[illegible]

Mikasa