



SPARE PARTS MANUAL

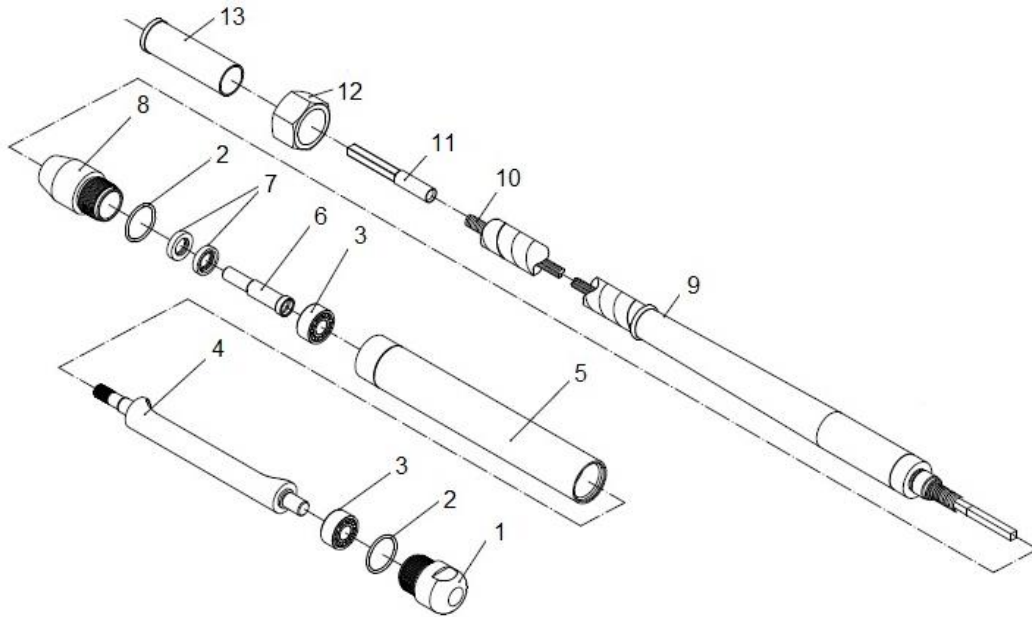
FLEXTOOL PORTAVIBE® BACKPACK FVE-BP



Applies to product after Serial Number F01-10000

Version 1.0 (February 2022)

FOR MORE INFORMATION
CONTACT US ON 1300 353 986 OR VISIT flextool.com.au



Flextool Backpack Concrete Vibrator Flexshaft & Vibrator Heads (All Models)

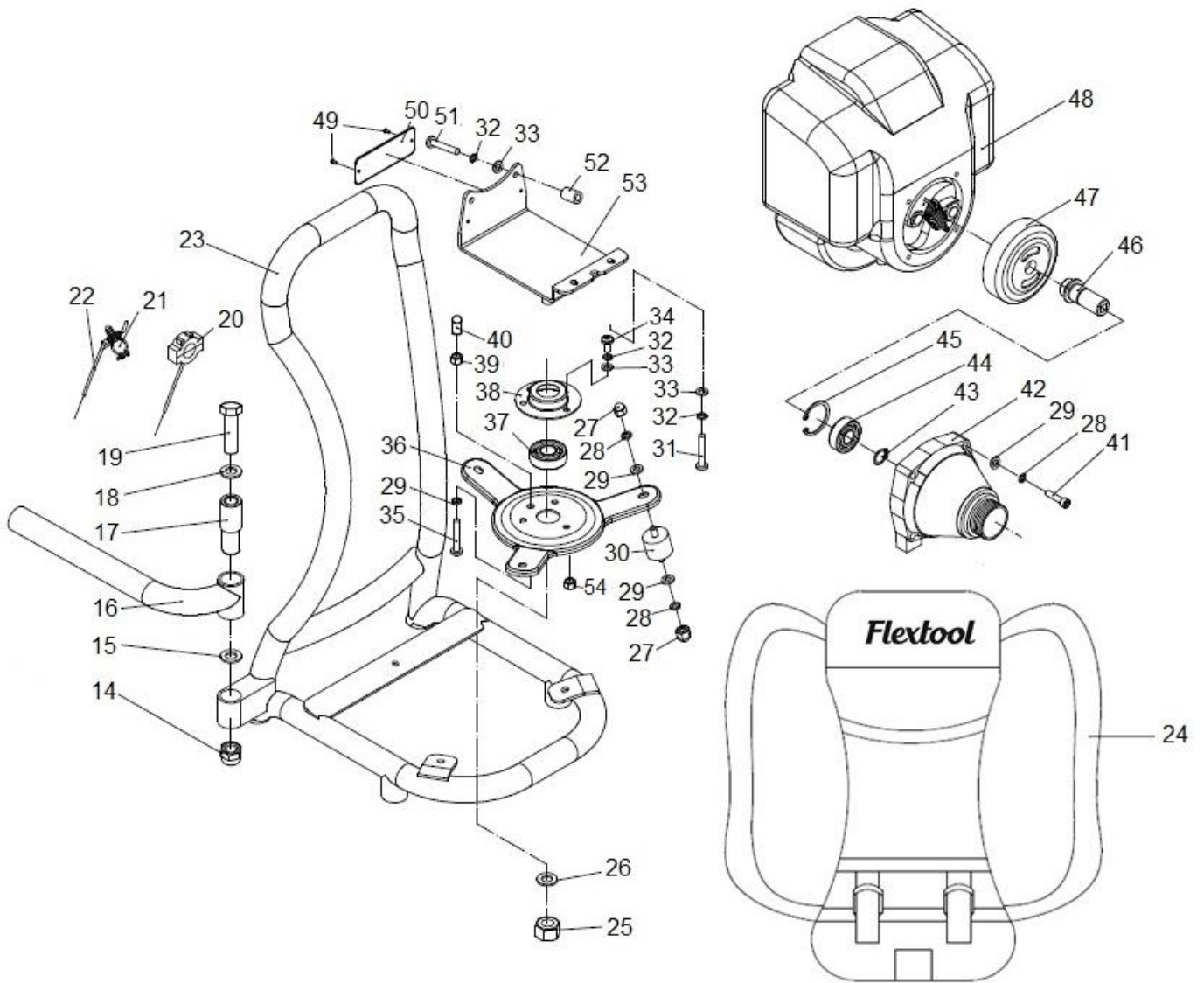
Item No.	Product Code	Description	Qty	Remarks
1	NPS01815-UNIT	FLX NOSE CAP FVE-H34 (086074)	1	
	NPS09333-UNIT	FLX NOSE CAP FVE-H44 (086041)	1	
2	See Remarks	FLX O-RING 25X1.8 FVE-H34 (510360)	2	Use SK-1 or AS-1
	See Remarks	FLX O-RING 32.5X3.55 FVE-H44 (510432)	2	Use SK-2 or AS-2
3	See Remarks	FLX BEARING 6001 FVE-H34 (550558)	4	Use SK-1 or AS-1
	See Remarks	FLX BEARING NSK5202 FVE-H44 (550407)	2	Use SK-2 or AS-2
4	See Remarks	FLX ROTOR FVE-H34 (086073)	1	Use AS-1
	See Remarks	FLX ROTOR FVE-H44 (086040)	1	Use AS-2
5	See Remarks	FLX BARREL FVE-H34 (086072)	1	Use AS-1
	See Remarks	FLX BARREL FVE-H44 (086039)	1	Use AS-2
6	See Remarks	FLX ADAPTOR SPINDLE FVE-H34 (086071)	1	Use AS-1
	See Remarks	FLX ADAPTOR SPINDLE FVE-H44 (086038)	1	Use AS-2
7	See Remarks	FLX OIL SEAL 12X24X7 FVE-H34 (530406)	2	Use SK-1 or AS-1
	See Remarks	FLX OIL SEAL 16X28.5X8 FVE-H44 (530509)	2	Use SK-2 or AS-2
8	See Remarks	FLX ADAPTOR BARREL FVE-H34 (086070)	1	Use AS-1
	See Remarks	FLX ADAPTOR BARREL FVE-H44 (086044)	1	Use AS-2
9	See Remarks	FLX CASING 2M FVE-F2 (086045)	1	Use AS-5
	See Remarks	FLX CASING 3M FVE-F3 (086069)	1	Use AS-6
10	See Remarks	FLX CORE 2M FVE-F2 (810175)	1	Use AS-3 or AS-5
	See Remarks	FLX CORE 3M FVE-F3 (810176)	1	Use AS-4 or AS-6
11	See Remarks	FLX CORE END SQUARE FVE-F2/F3 (086046)	1	Use AS-3, AS-4, AS-5 or AS-6
12	See Remarks	FLX NUT FVE-F2/F3 (086042)	1	Use AS-5 or AS-6
13	See Remarks	FLX FERRULE FVE-F2/F3 (086047)	1	Use AS-5 or AS-6

Assembly / Service Kits

Item No.	Product Code	Description	Qty	Remarks
SK-1	NPS01816-UNIT	FLX SERVICE KIT VIBRATOR HEAD FVE-H34 (086352SK)	1	Inc Items: 2,3,7
SK-2	NPS328SK-UNIT	FLX SERVICE KIT VIBRATOR HEAD FVE-H44 (086451SK)	1	Inc Items: 2,3,7

AS-1	FT201860-UNIT	FLX CONC VIBRATOR VIBE HEAD 34MM (FVE-H34) (086360F)	1	Inc Items: 1-8
AS-2	FT201861-UNIT	FLX CONC VIBRATOR VIBE HEAD 44MM (FVE-H44) (086460F)	1	Inc Items: 1-8
AS-3	NPS01818-UNIT	FLX INNER CORE ASSY 2M (086462Z)	1	Inc Items: 10, 11
AS-4	NPS01819-UNIT	FLX INNER CORE ASSY 3M (086463Z)	1	Inc Items: 10, 11
AS-5	FT201858-UNIT	FLX FLEXSHAFT ASSY 2M (FVE-F2) (086462FGZ)	1	Inc Items: 9-13
AS-6	FT201859-UNIT	FLX FLEXSHAFT ASSY 3M (FVE-F3) (086463FGZ)	1	Inc Items: 9-13

Backpack Concrete Vibrator



Backpack Concrete Vibrator

Item No.	Product Code	Description	Qty	Remarks
14	NPS01794-UNIT	FLX NUT NYLOCK M12 (610421)	1	
15	NPS01797-UNIT	FLX SPRING D26 (650714)	1	
16	NPS01811-UNIT	FLX HANDLE CONTROL ARM (086048)	1	
17	NPS01805-UNIT	FLX SPIN ADAPTOR (086049)	1	
18	NPS01790-UNIT	FLX FLAT WASHER 12MM (650305)	1	
19	NPS01800-UNIT	FLX BOLT M12X80 (590397)	1	
20	NPS01812-UNIT	FLX SWITCH ON/OFF (086057)	1	
21	NPS01817-UNIT	FLX THROTTLE CONTROL LEVER FVE-BP (570103)	1	
22	NPS01806-UNIT	FLX THROTTLE CABLE FVE-BP (086058)	1	
23	NPS01821-UNIT	FLX BACKPACK MAIN FRAME (086059)	1	
24	NPS01820-UNIT	FLX BACKPACK HARNESS (086075)	1	
25	NPS01791-UNIT	FLX NUT M10 (610104)	1	
26	NPS01792-UNIT	FLX WASHER 10MM (650304)	1	
27	NPS01795-UNIT	FLX DOME NUT (610602)	6	
28	NPS01785-UNIT	FLX SPRING WASHER 6MM (650502)	10	
29	NPS01786-UNIT	FLX FLAT WASHER 6MM (650302)	11	
30	NPS01807-UNIT	FLX RUBBER MOUNT (086060)	3	
31	NPS01801-UNIT	FLX BOLT M5X16 (630402)	2	
32	NPS01787-UNIT	FLX SPRING WASHER 5MM (650501)	12	
33	NPS01788-UNIT	FLX FLAT WASHER 5MM (650301)	12	
34	NPS01798-UNIT	FLX BOLT M5X16 (630713)	3	
35	NPS01799-UNIT	FLX BOLT M6X25 (590303)	1	
36	NPS01813-UNIT	FLX TRI SWIVEL SUPPORT BASE (086061)	1	
37	NPS01810-UNIT	FLX BEARING 6202-2Z (550507)	1	
38	NPS01808-UNIT	FLX BEARING COVER (086062)	1	
39	NPS01793-UNIT	FLX NYLOCK NUT M6 (610102)	1	
40	NPS01802-UNIT	FLX RUBBER CAP (086067)	1	
41	See Remarks	FLX BOLT M6X30 (590371)	4	Use AS-7
42	See Remarks	FLX CLUTCH HOUSING COUPLER (086063)	1	Use AS-7
43	See Remarks	FLX CIRCLIP 17MM (670216)	1	Use AS-7
44	See Remarks	FLX BEARING 6203-2RZ (550102)	1	Use AS-7
45	See Remarks	FLX CIRCLIP 40MM (670105)	1	Use AS-7
46	See Remarks	FLX SHAFT COUPLER (086064)	1	Use AS-7
47	See Remarks	FLX CLUTCH DRUM (086065)	1	Use AS-7
48	NPS03318-UNIT	HON ENGINE GX35 (TSUT) PORTAVIBE (570614/5)	1	
49	NPS01789-UNIT	FLX RIVET 3.3X8 (632213)	2	
50	NPS01809-UNIT	FLX SERIAL NUMBER PLATE (710239)	1	
51	NPS01803-UNIT	FLX BOLT M5X35 (8.8) (630453)	2	
52	NPS01804-UNIT	FLX SLEEVE (086068)	2	
53	NPS01814-UNIT	FLX ENGINE SUPPORT BASE (086066)	1	
54	NPS01796-UNIT	FLX NYLOCK NUT M5 (610422)	3	

Assembly / Service Kits

Item No.	Product Code	Description	Qty	Remarks
AS-7	NPS01822-UNIT	FLX COUPLING ASSY ENGINE (086068)	1	Inc Items: 41-47



Parchem Construction Supplies Pty Ltd

1956 Dandenong Road, Clayton VIC 3168, Australia

Phone: 1300 353 986

flextool.com.au

ABN 80 069 961 968

This manual summarises our best knowledge of the product based on the information available at the time of publication. You should read this manual carefully and consider the information in the context of how the product will be used. Our responsibility for products sold is subject to our standard terms and conditions of sale.

DISCLAIMER:

Any advice, recommendation, information, assistance or service provided by us in this manual is given in good faith and is believed by us to be appropriate and reliable. However, any advice, recommendation, information, assistance or service provided by us is provided without liability or responsibility PROVIDED THAT the foregoing shall not exclude, limit, restrict or modify the right entitlements and remedies conferred upon any person or the liabilities imposed upon us by any condition or warranty implied by Commonwealth, State or Territory Act or ordinance void or prohibiting such exclusion limitation or modification. The product can be expected to perform as indicated in this manual so long as operation and operational procedures of the individual products are followed as recommended in this manual.

Design and technical specifications may be subject to changes.

© This publication is copyright. All rights are reserved. Flextool and PortaVibe are registered trade marks of Parchem Construction Supplies Pty Ltd.

FOR MORE INFORMATION

CONTACT US ON 1300 353 986 OR VISIT flextool.com.au