

PARTS LIST

YANMER ENGINE
L70N6-VEMK2
FOR MIKASA PRODUCTS

WITH PRODUCT NAME

REVERSIBLE COMPACTOR

MVH-208DSY :EXPORT (NON EU)

MVH-308DSY :EXPORT (NON EU)

PARTS REMARK INDEX

How to read the marks and remarks used in this parts book.

Section 1 : Explanation of Code Use In “MRK” Column

OO : Interchangeable between the new part and the old one.

XX : Not Interchangeable between new and old.

OX : New part is usable for the old machine but the old part is not usable for the new machine.

XO : The old part is usable for the new machine but the new part is not usable for the old machine.

Note : In case of the lack of interchangeability between the new part and old part, a new part may be used by replacing all other parts found in the assembly. In this case, refer to section 2 for instruction on identifying other parts involved in a new assembly.

AD : Newly established (added)

DC : Suspended (discontinued)

NC : Part number changed

QC : Quantity used has been changed

NS : Not supplied individually but supplied in an assembly or a group.

AS : Special part designed to allow interchangeability between new and old part.

CR : Correction

Section 2 : Items Found In “Remark” Column

Serial Numbers — Where indicated, this indicates a serial number range (inclusive) where a particular part is used.

Model Number — Where indicated, this shows that the corresponding part is utilized only with this specific model number or model number variant.

or * : All parts with the same number following # or * belong to the same assembly. This part cannot be interchanged individually with any other assemblies to replace an old part (indicated by #), with a new part (indicated by *), then all other parts of that assembly must be replaced with new ones.

Note : If more than one of the same reference number is listed, the last one listed indicates newest (or latest) part available.

Section 3: Example

REF NO.	PART NO.	PART NAME	QTY	MRK	REMARKS
457(1)	5122-09230	Hinge Metal, Upper/24g	1		-1070 #3 (5)
457(2)	5072-09420	Hinge Metal, Upper M16	1	OX(3)	U1071-(6) * 3(7)

(1) Old part

(2) New part

(3) New part usable with old machine, but old part not usable with new machine (reference section 1).

(4) Old part number is used through this machine serial number.

(5) Old part, used in an assembly with other parts marked with #3. To use this part on a new machine, all other parts in this assembly must be replaced with old ones.

(6) New part put into use starting with this serial number and is still current.

(7) New part used in an assembly with other parts marked *3, to use this part as a replacement for an old part, all other *3 marked parts must be changed at the same time.

Section 4: Items Found In “MK2” Column

(only for suspended products)

! OO (“OO” is shown in figure) : The part shown in lower line is supplied.

! SD : Not available due to termination of production.

! NS : Not supplied individually, but supplied in an assembly or a group.

! PD : Supplied as unit product.

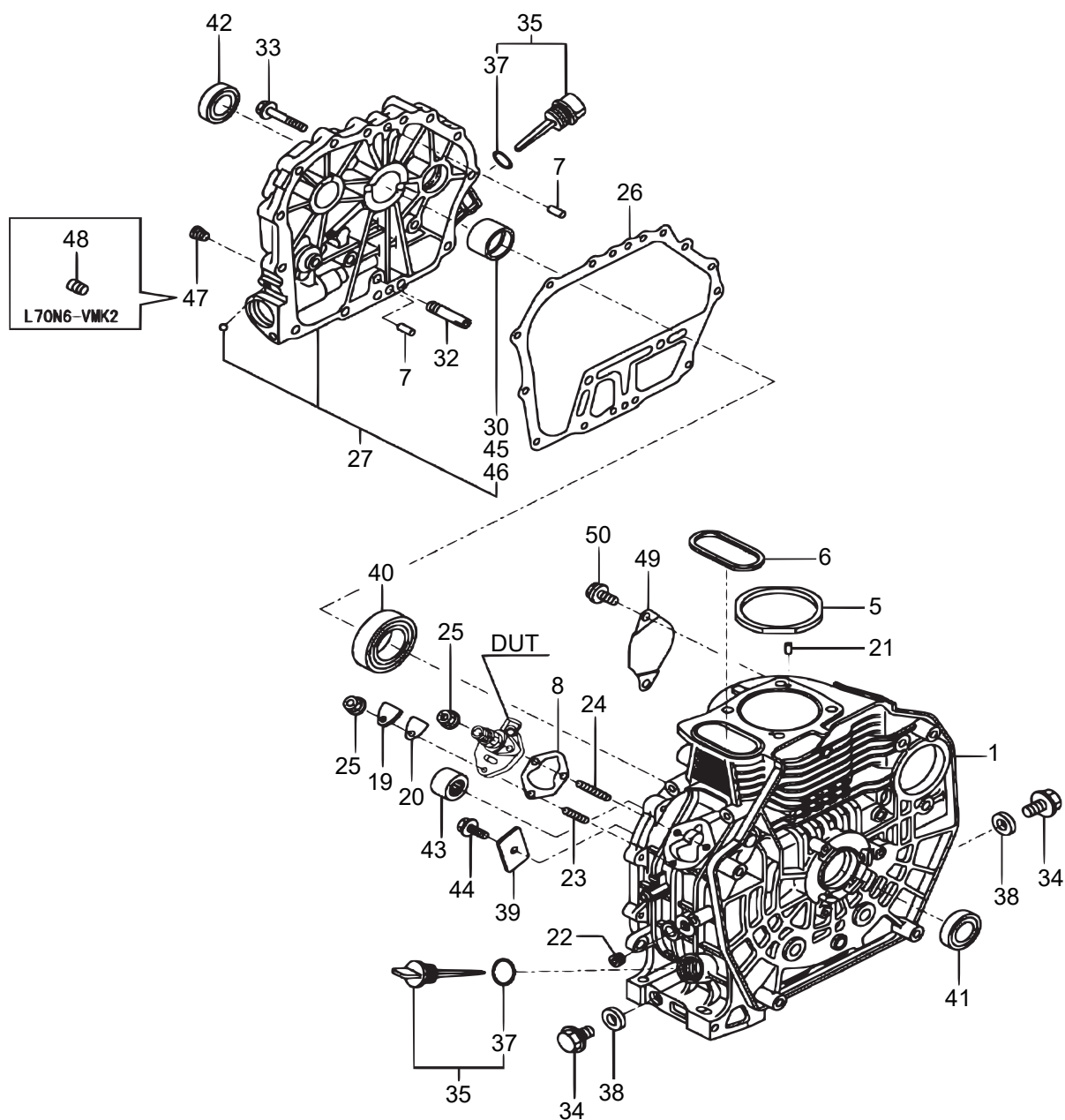
SS : Not available after stock run out.

(The contents of this parts catalog are subject to change without notice.)

L70N6-VEMK2

CYLINDER BLOCK

DUN0



L70N6-VEMK2

CYLINDER BLOCK

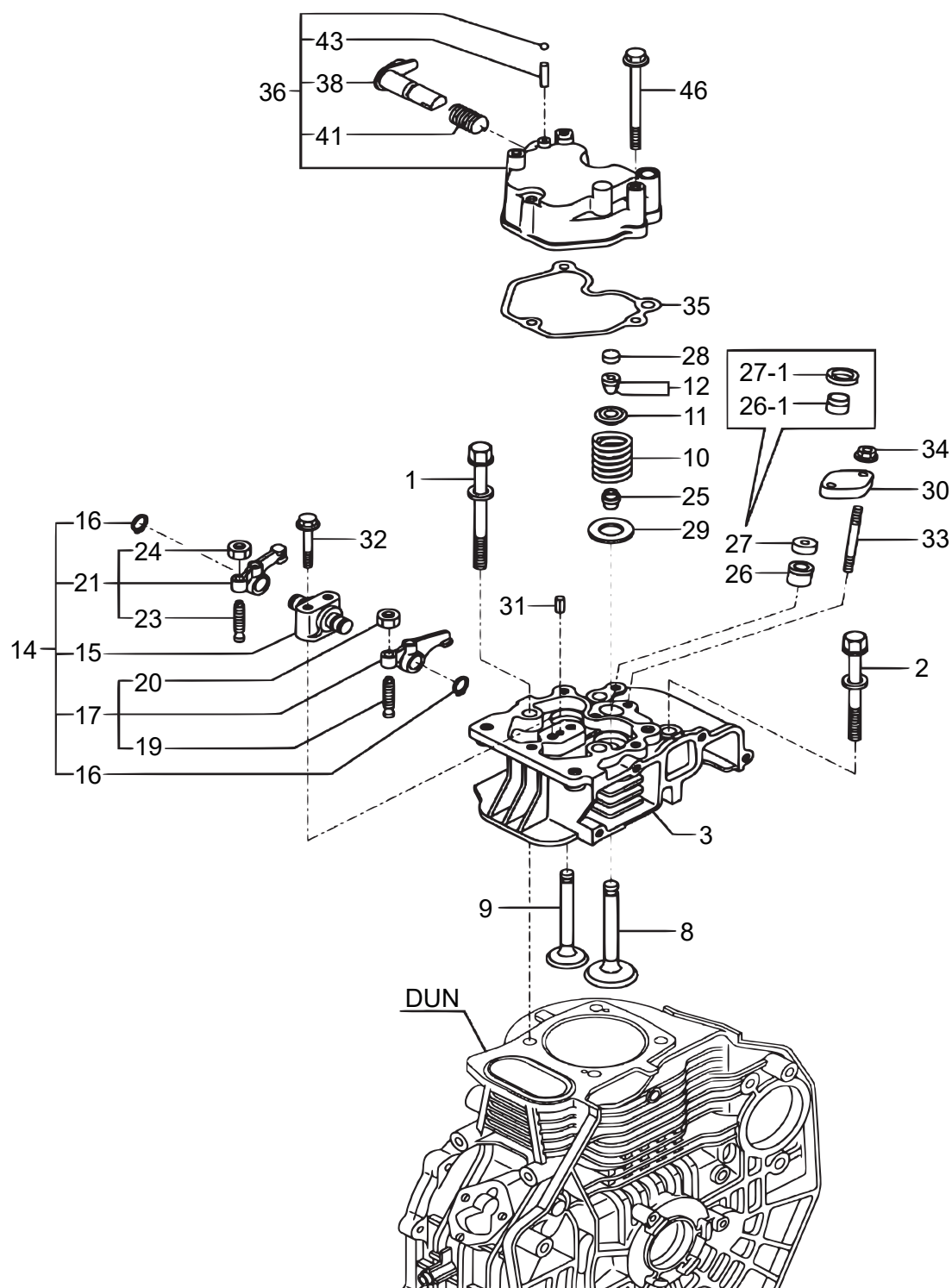
**** DUN ****

REF NO.	PART NO.	PART NAME	Q' TY	MRK	MK2	REMARKS
1	114210-01020	BLOCK ASSY, CYLINDER /L70N	1		0JH	
5	114395-01331	GASKET ASSY, CYL. HEAD/L70V	1			
6	114350-01380	O-RING	1			
7	114299-01600	PIN, 8X12	2		SS!0JH	
8	114299-01800	SHIM SET / L70V	1			
19	114299-01830	COVER(FO PUMP) / L70V	1		0JH	
20	114250-01841	GASKET	1			
21	22312-040080	PIN 4X8 STRAIGHT	2			
22	23875-020000	PLUG PT1/4 STEEL / L70V	1		0JH	
23	26226-060182	STUD M 6X 18 PLATED	1		SS!0JH	
24	26226-060222	STUD M 6X 22 PLATED	2		0JH	
25	26366-060002	NUT M 6	3			
26	114399-01410	GASKET, CRANK CASE / L70V	1			
27	114211-01460	COVER(D, CRANK CASE)/L70V	1		0JH	
30	114350-02100	BEARING MAIN	1			
32	114299-35150	PIPE, L. O. INLET / L70V	1		0JH	
33	26106-080352	BOLT M 8X 35 PLATED	15			
34	105425-01690	PLUG M16	2			
35	114699-01760	CAP, W/LUB, OIL GAUGE	2			
37	24311-000180	O-RING 1A P-18.0	2			
38	22190-160002	SEAL WASHER 16S	2			
39	114299-02030	RETAINER	1		0JH	
40	114350-02113	BALL. BEARING	1			
41	160110-02220	SEAL, OIL	1			
42	160110-02220	SEAL, OIL	1			
43	24162-152116	NEEDLE BEARING	1		0JH	
44	26106-080122	BOLT M 8X 12 PLATED	1			
45	114350-02200	MAIN BEARING, US=0.25	1		0JH	
46	114840-02210	MAIN BEARING US=0.50	1		0JH	
47	121252-39450	SENDER, OIL PRESSURE	1			

L70N6-VEMK2

DUO0

CYLINDER HEAD & BONNET



L70N6-VEMK2

CYLINDER HEAD & BONNET

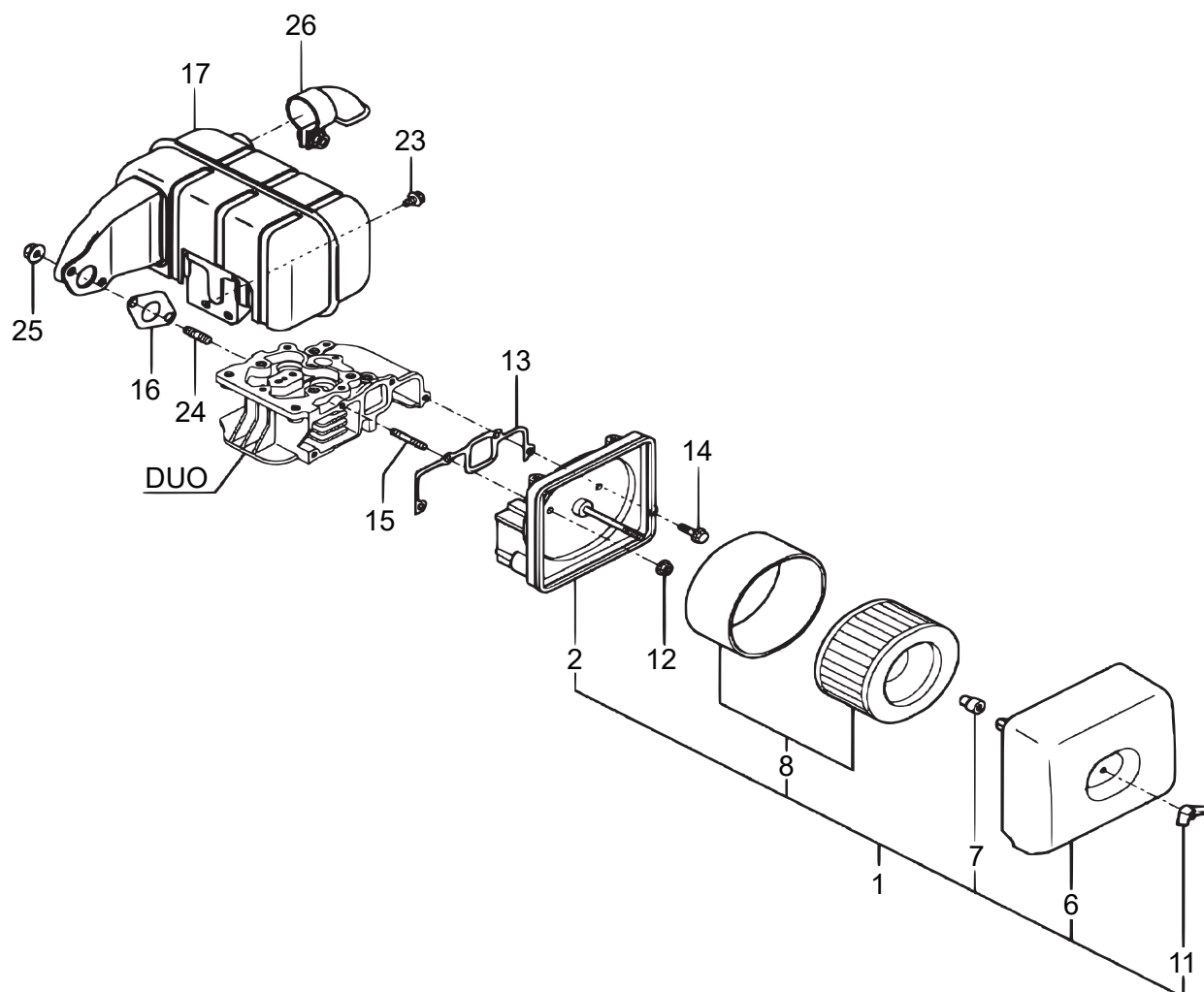
**** DUO ****

REF NO.	PART NO.	PART NAME	Q' TY	MRK	MK2	REMARKS
1	114210-01200	BOLT, CYL. HEAD A / L70V	2		0JH	
2	114210-01210	BOLT, CYL. HEAD B / L70V	2		0JH	
3	114220-11020	HEAD ASSY, CYLINDER /L70N	1		0JH	
8	114210-11100	VALVE, INTAKE / L70V	1			
9	114210-11110	VALVE, EXHAUST / L70V	1			
10	114210-11120	SPRING, VALVE	2			
11	114210-11180	RETAINER, SPRING	2		0JH	
12	114210-11930	COTTER ASSY	2			
14	114210-11250	SUPPORT ASSY ROCKER /L70V	1			
15	114210-11250	SUPPORT ASSY ROCKER /L70V	1			
16	22242-000120	CIR CLIP 12	2		0JH	
17	114210-11650	ARM ASSY, INTAKE / L70V	1		0JH	
19	114250-11240	SCREW, VALVE ADJUST.	1		0JH	
20	26856-060002	LOCK NUT 6	1		0JH	
21	11421C-11660	ARM ASSY, EXHAUST/L70V6-J2	1		0JH	
23	114250-11240	SCREW, VALVE ADJUST.	1		0JH	
24	26856-060002	LOCK NUT 6	1		0JH	
25	114350-11341	SEAL, VALVE STEM	2			
26	114339-11451	PROTECTOR, NOZZLE /L70N	1		0JH	
26	114240-11450	PROTECTOR, NOZZLE/L70V6-J2	1	XX		ES20738~
27	114339-11551	GASKET, NOZZLE /L70N	1		0JH	
27	114240-11550	SEAT, NOZZLE/L70V6-J2	1	XX		ES20738~
28	105010-11490	CAP, VALVE	2			
29	114299-11600	WASHER, VALVE SPRING /L70V	2		0JH	
30	114210-11901	RETAINER NOZZLE /L70N	1		0JH	
31	22351-040008	SPRING PIN 4X 8	1			
32	26106-060402	BOLT M6X40 PLATED	2		SS!0JH	
33	26226-060552	STUD M 6X 55	2			
34	26366-060002	NUT M 6	2			
35	114210-11310	GASKET, BONNET / L70V	1			
36	114210-11950	BONNET ASSY, HEAD / L70V	1			
38	114210-03590	SHAFT ASSY, DECOMP / L70V	1		0JH	
41	114299-03640	SPRING, DECOMP / L70V	1		0JH	
43	22312-030160	PARALLEL PIN 3X16	1		0JH	
46	26106-060552	BOLT M 6X 55 PLATED	3			

L70N6-VEMK2

DUP0

AIR CLEANER & MUFFLER



AIR CLEANER & MUFFLER

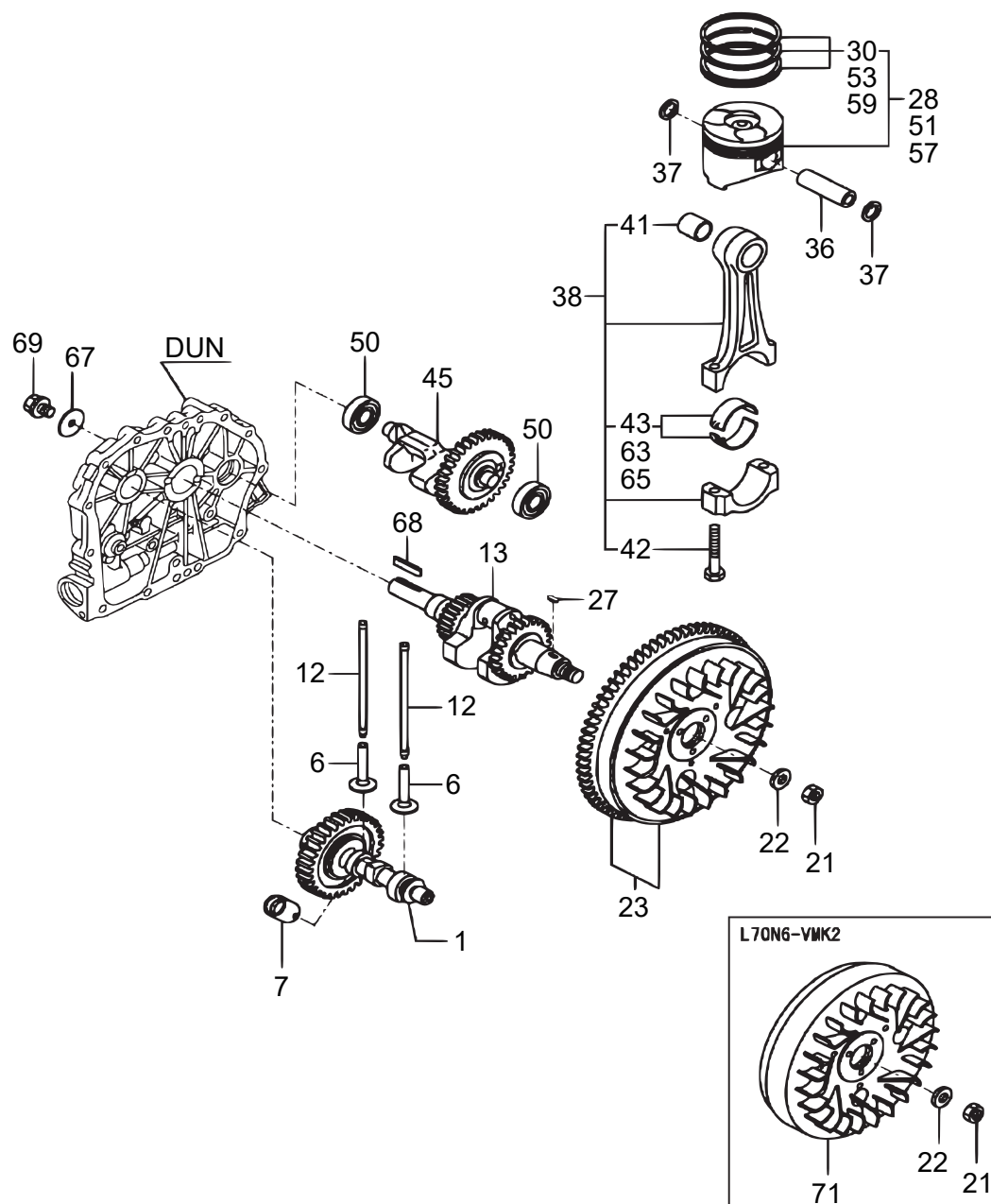
**** DUP ****

[illegible]

L70N6-VEMK2

DUQ0

CRANKSHAFT, PISTON & CAMSHAFT



L70N6-VEMK2

CRANKSHAFT, PISTON & CAMSHAFT

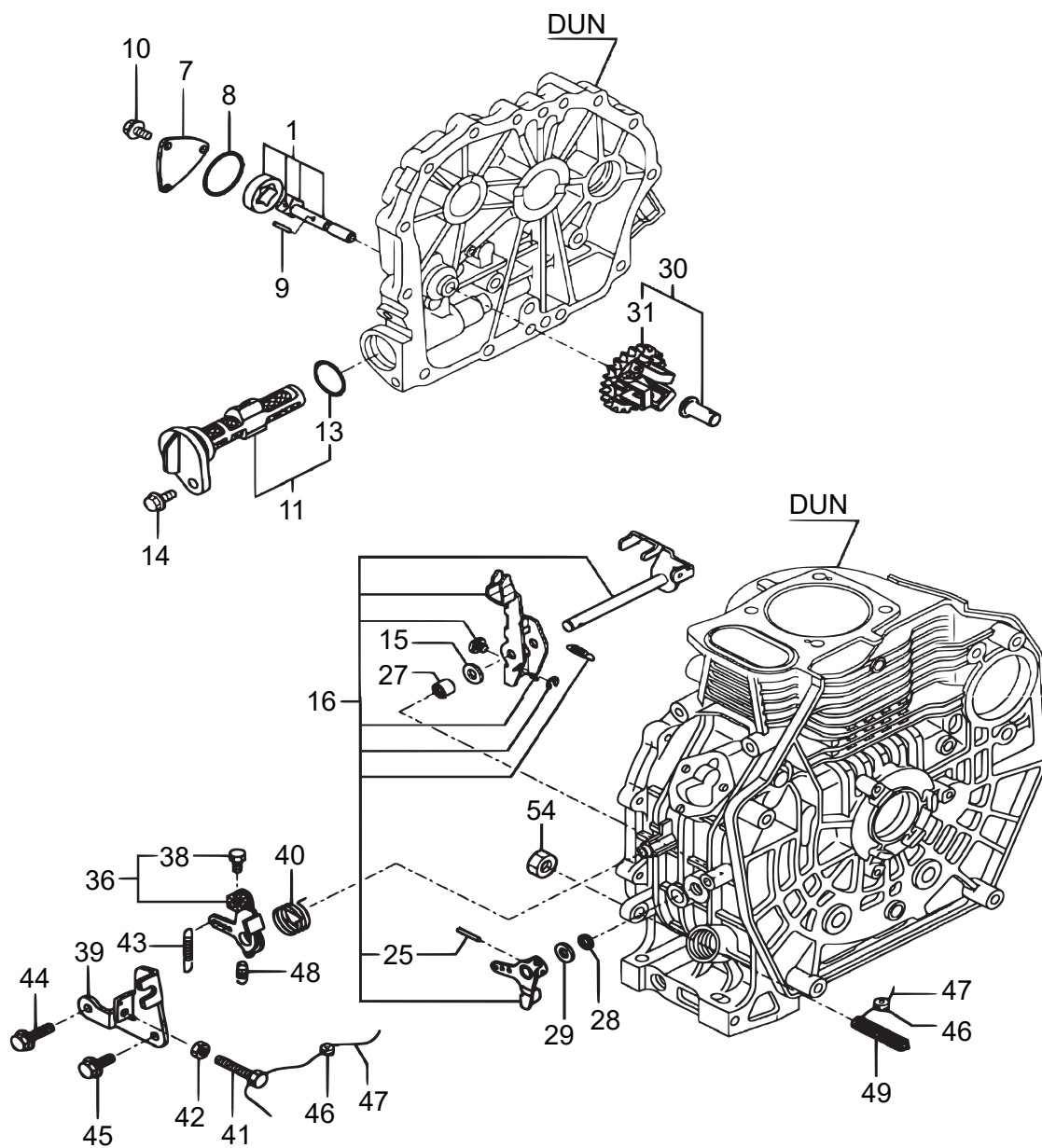
**** DUQ ****

REF NO.	PART NO.	PART NAME	Q' TY	MRK	MK2	REMARKS
1	11422C-14580	CAMSHAFT ASSY / L70N	1		0JH	
6	114210-14200	TAPPET / L70V	2		0JH	
7	114210-14300	TAPPET ASSY, ROLLER / L70V	1		0JH	
12	114210-14400	ROD ASSY, PUSH / L70V	2		0JH	
13	11421C-21810	CRANKSHAFT(D ASSY) /L70N	1		0JH	
21	114299-21220	NUT	1		0JH	
22	114299-21550	WASHER, FLYWHEEL	1		0JH	
23	114399-21590	FLYWHEEL ASSY, DE	1		0JH	
23	114399-21550	FLYWHEEL ASSY, DE/L70V	1	OX	0JH	ES33286~
27	22512-040120	KEY 4X 12	1			
28	714220-22720	PISTON W/RINGS(D) /L70N	1		0JH	
30	714870-22502	RING SET, PISTON	1			
36	114399-22300	PISTON PIN	1			
37	22252-000210	CIRCLIP 21	2			
38	11422C-23700	ROD ASSY, CONNECTING /L70N	1			
41	114840-23910	BUSH, PISTON PIN	1		0JH	
42	118200-23200	BOLT, ROD	2		0JH	
43	114840-23600	BEARING, CRANK PIN / L70V	1			
45	714210-28510	SHAFT ASSY, BALANCER /L70V	1		0JH	
50	24101-062030	BEARING	2			
51	714220-22620	PISTON W/RING 0.250S/L70N	1		0JH	
53	114872-22140	RING SET 0. S=0.25 / L70	1		0JH	
57	714220-22580	PISTON W/RING 0.500S/L70N	1		0JH	
59	114872-22150	RING SET 0. S=0.50	1		0JH	
63	114840-23610	BEARING, PIN(U. S=0.25)	1		SS!0JH	
65	114840-23620	BEARING, PIN(U. S=0.50)	1		0JH	
67	160310-14550	WASHER	1		SS!0JH	
68	22512-070360	KEY 7X36 RR	1			
69	26106-080202	BOLT M 8X 20 PLATED	1			

L70N6-VEMK2

DUR0

LUB. OIL PUMP & GOVERNOR



L70N6-VEMK2

LUB. OIL PUMP & GOVERNOR

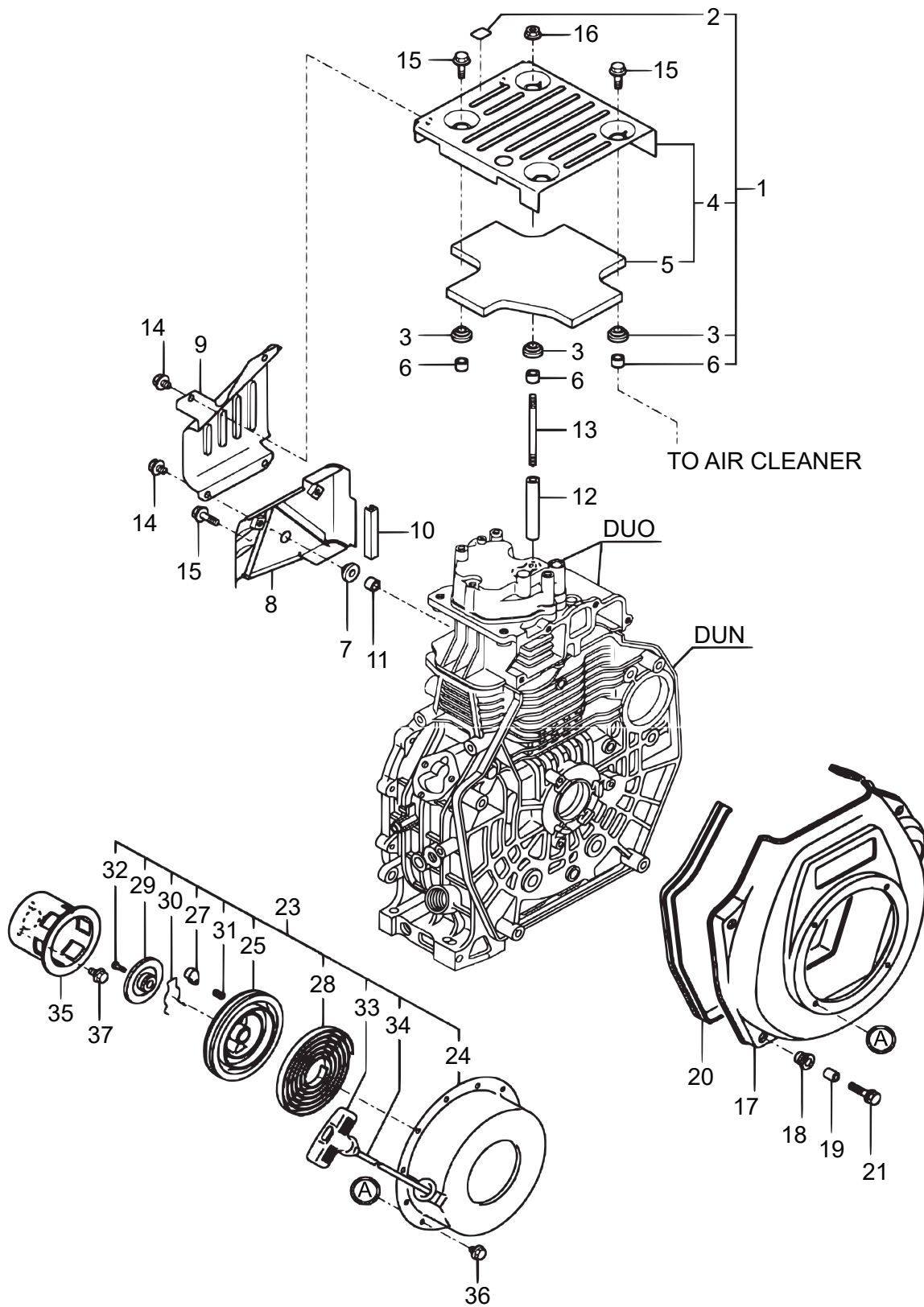
**** DUR ****

REF NO.	PART NO.	PART NAME	Q' TY	MRK	MK2	REMARKS
1	114250-32010	PUMP ASSY, LUB. OIL	1		0JH	
7	114299-32070	COVER, LUB. OIL PUMP / L70V	1		SS!0JH	
8	114299-32570	O-RING, COVER / L70V	1			
9	22312-030160	PARALLEL PIN 3X16	1		0JH	
10	26106-060122	BOLT M 6X 12 PLATED	3			
11	114299-35110	FILTER CMP, LUB. OIL / L70V	1			
13	24341-000224	O-RING 1A S-22. 4	1			
14	26106-060162	BOLT M 6X 16 PLATED	1			
15	114299-61190	WASHER, GOVERNOR	1		SS!0JH	
16	114211-61500	LEVER ASSY, GOVERNOR /L70N	1		0JH	
25	22322-030200	TAPER PIN 3X20	1			
27	114770-61520	BEARING, NEEDLE	2			
28	114299-61600	SEAL, OIL	1			
29	114770-61610	WASHER, THRUST	1			
30	114810-61700	GOVERNOR CP	1		0JH	
31	114210-61290	WEIGHT ASSY, GOVERNOR/L70V	1		0JH	
36	114252-66053	HANDLE, REGULATOR /L70N	1		0JH	
38	105225-66990	SCREW	1		0JH	
39	114349-66110	BRACKET, REGULATOR /L70N	1		0JH	
40	114299-66250	SPRING, RETURN	1		0JH	
40	114299-66201	SPRING, RETURN	1	OX		ES15487~
41	114299-66440	BOLT, ADJUSTING	1		0JH	
42	26756-060002	LOCK NUT M 6 PLATED	1			
43	114220-66010	SPRING, REGULATOR/L70N	1		0JH	
44	26106-060202	BOLT M 6X 20 PLATED	1			
45	26106-060142	BOLT M 6X14 PLATED	1			
46	114780-61090	TIN	2			
47	22451-060000	WIRE 0. 6	2			
48	114299-66201	SPRING, RETURN	1			
49	114239-66600	CONTROLLER AY/L70N	1			
54	26776-100002	LOCK NUT M10 PLATED	1		SS!0JH	

L70N6-VEMK2

COOLING & STARTING DEVICE

DUS0



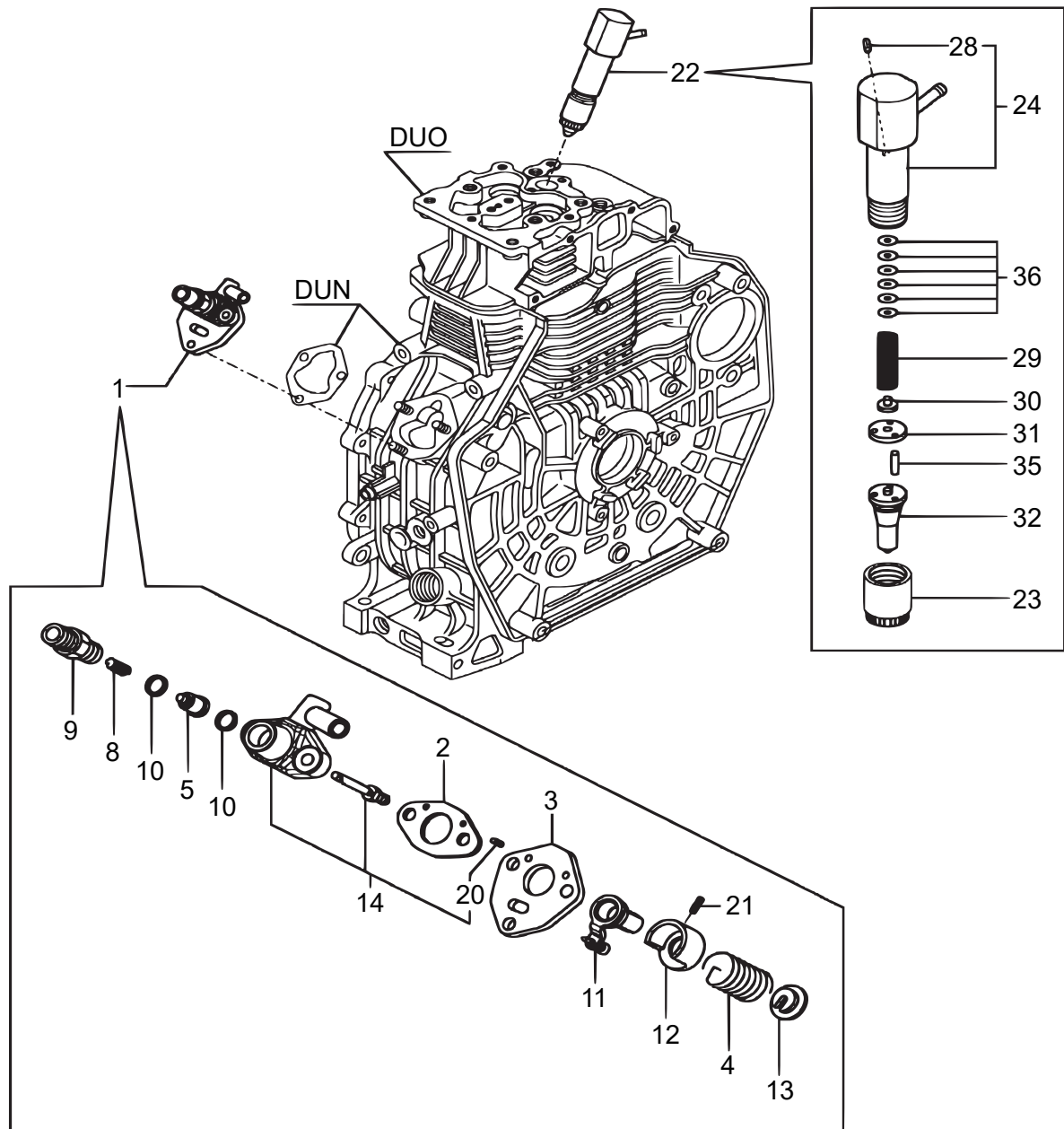
L70N6-VEMK2
COOLING & STARTING DEVICE
**** DUS ****

REF NO.	PART NO.	PART NAME	Q' TY	MRK	MK2	REMARKS
1	114210-45210	COVER, TOP/L70V/308	1		0JH	
2	114210-07200	LABEL, DECOMPRESSION	1		SS!0JH	
3	183720-55210	GROMMET	4		0JH	
3	114299-45220	GROMMET, TANK	4	00		ES17087~
4	114210-45210	COVER, TOP/L70V/308	1		0JH	
5	114210-45310	DAMPER / L70V	1		0JH	
6	114350-45340	COLLAR	4			
7	114299-45220	GROMMET, TANK	1			
8	114210-45260	COVER B, SIDE(13) / L70V	1		0JH	
9	114210-45270	COVER A, SIDE(13) / L70V	1		0JH	
10	114399-45320	RUBBER, SEAL / L70V	1		0JH	
11	114350-45340	COLLAR	1			
12	114210-45350	SPACER, TOP COVER / L70V	1		0JH	
13	114210-45360	STUD BOLT, TOP COVER/L70N	1		SS!0JH	
14	26106-060082	BOLT M 6X 8 PLATED	4			
15	26106-060202	BOLT M 6X 20 PLATED	4			
16	26366-060002	NUT M 6	1			
17	114210-45150	FAN CASE/L70N/308	1		0JH	
18	114299-45301	RUBBER CUSHION/SMK2	4			
19	114299-45310	COLLAR, FAN CASE / L70V	4		0JH	
20	114299-45331	SEAL, FAN CASE / L70V	1		0JH	
21	114299-45350	BOLT, FAN CASE / L70V	4		0JH	
23	114399-76251	RECOIL STARTER AY/L70V6	1			
24	114399-76510	CASE, STARTER / L70V	1		0JH	
25	114399-76521	REEL, RECOIL /L70N	1		0JH	
27	114399-76531	RATCHET /L70N	1		!114399-76600	
28	114399-76540	SPRING, SPIRAL / L70V	1			
29	114399-76550	COVER, RATCHET / L70V	1			
30	114399-76560	SPRING	1		0JH	
31	114399-76570	SPRING, RETURN	1			
32	114399-76580	SCREW	1		SS!0JH	
33	114399-76620	KNOB, STARTER / L70V	1			
34	114399-76630	ROPE, STARTER / L70V	1			
35	114399-76590	PULLEY, STARTER / L70V	1			
36	26106-060082	BOLT M 6X 8 PLATED	4			
37	26106-060122	BOLT M 6X 12 PLATED	3			

L70N6-VEMK2

DUT0

FUEL INJECTION PUMP & FUEL INJECTION VALVE
(E/G. SERIAL NO. AFTER ES363301)



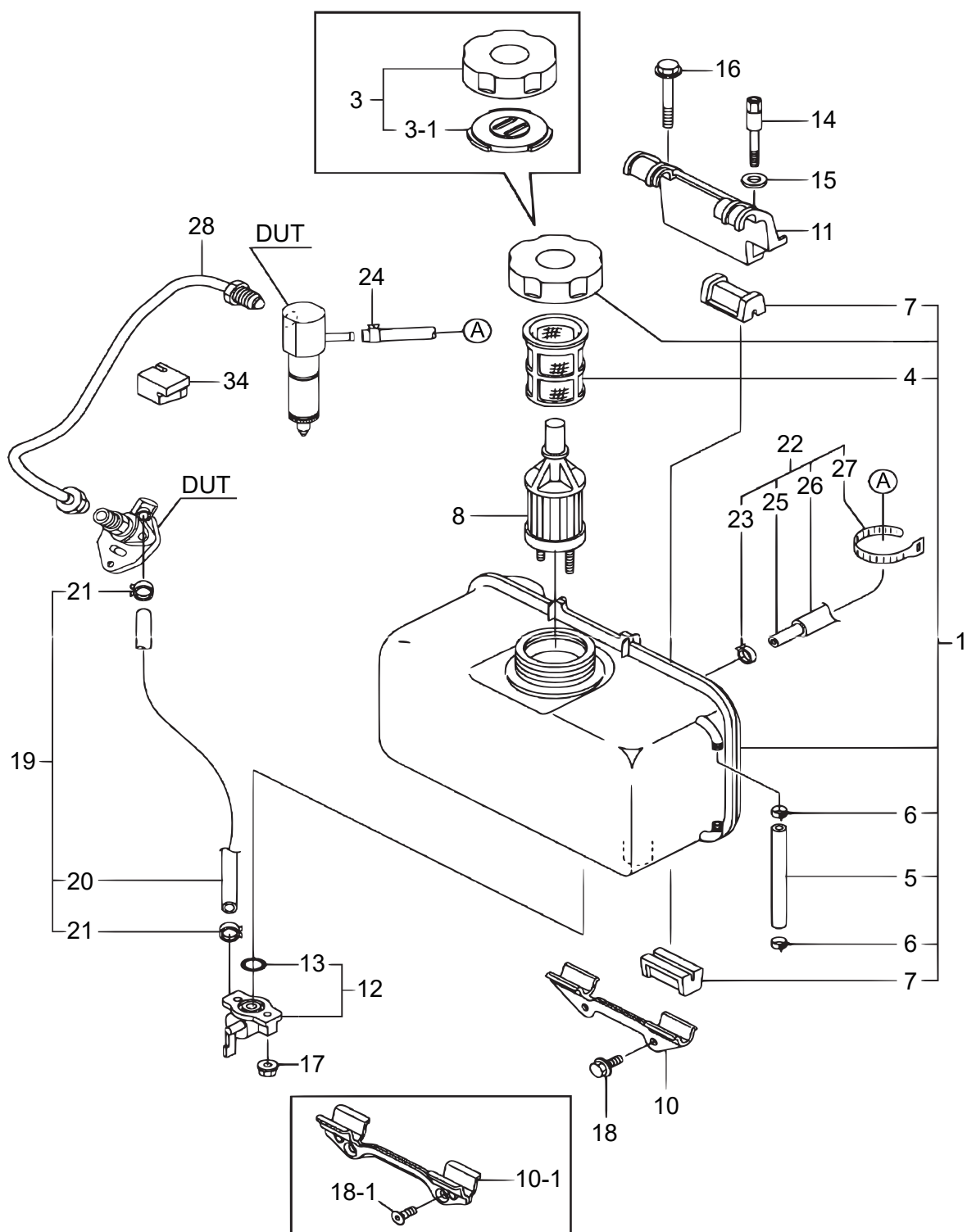
L70N6-VEMK2

FUEL INJECTION PUMP & FUEL INJECTION VALVE

**** DUT ****

REF NO.	PART NO.	PART NAME	Q' TY	MRK	MK2	REMARKS
1	714239-51220	PUMP, AY. F, INJECT/L70N	1			
2	105546-51020	GASKET	1		0JH	
3	114250-51080	PLATE	1		0JH	
4	114250-51160	SPRING	1		SS!0JH	
5	114650-51301	VALVE ASSY, DELIVERY/L70N6	1		0JH	
8	105546-51330	SPRING, DELIV. VALVE	1		0JH	
9	114250-51340	HOLDER, F. I. P. DELIVERY	1		SS!0JH	
10	124550-51350	GASKET, DELIVERY	2		0JH	
11	114250-51500	LEVER ASSY, CONTROL	1		SS!0JH	
12	114250-51640	SEAT (A), SPRING	1		0JH	
13	114250-51650	SEAT (B), SPRING	1		0JH	
14	114239-51810	BODY ASSY, FOP /L70N6	1		0JH	
20	22351-020006	SPRING PIN 2X 6	2		SS!0JH	
21	22351-030008	SPRING PIN 3X 8	1		SS!0JH	
22	714239-53200	VALVE ASSY, INJECTION/L70N	1			
23	114250-53080	NUT, NOZZLE CASE	1		0JH	
24	114339-53100	HOLDER ASSY, NOZZLE /L70N	1		0JH	
28	22351-025005	PIN /L70N	1		0JH	
29	114250-53120	SPRING, NOZZLE	1		0JH	
30	114250-53130	SEAT, NOZZLE SPRING	1		0JH	
31	114250-53140	PLATE, STOP	1		0JH	
32	114239-53200	NOZZLE ASSY	1		0JH	
35	114250-53210	PIN	2		0JH	
36	119803-53800	SHIM SET/L70N-308	1		0JH	

FUEL TANK & FUEL PIPE



L70N6-VEMK2

FUEL TANK & FUEL PIPE

**** DUU ****

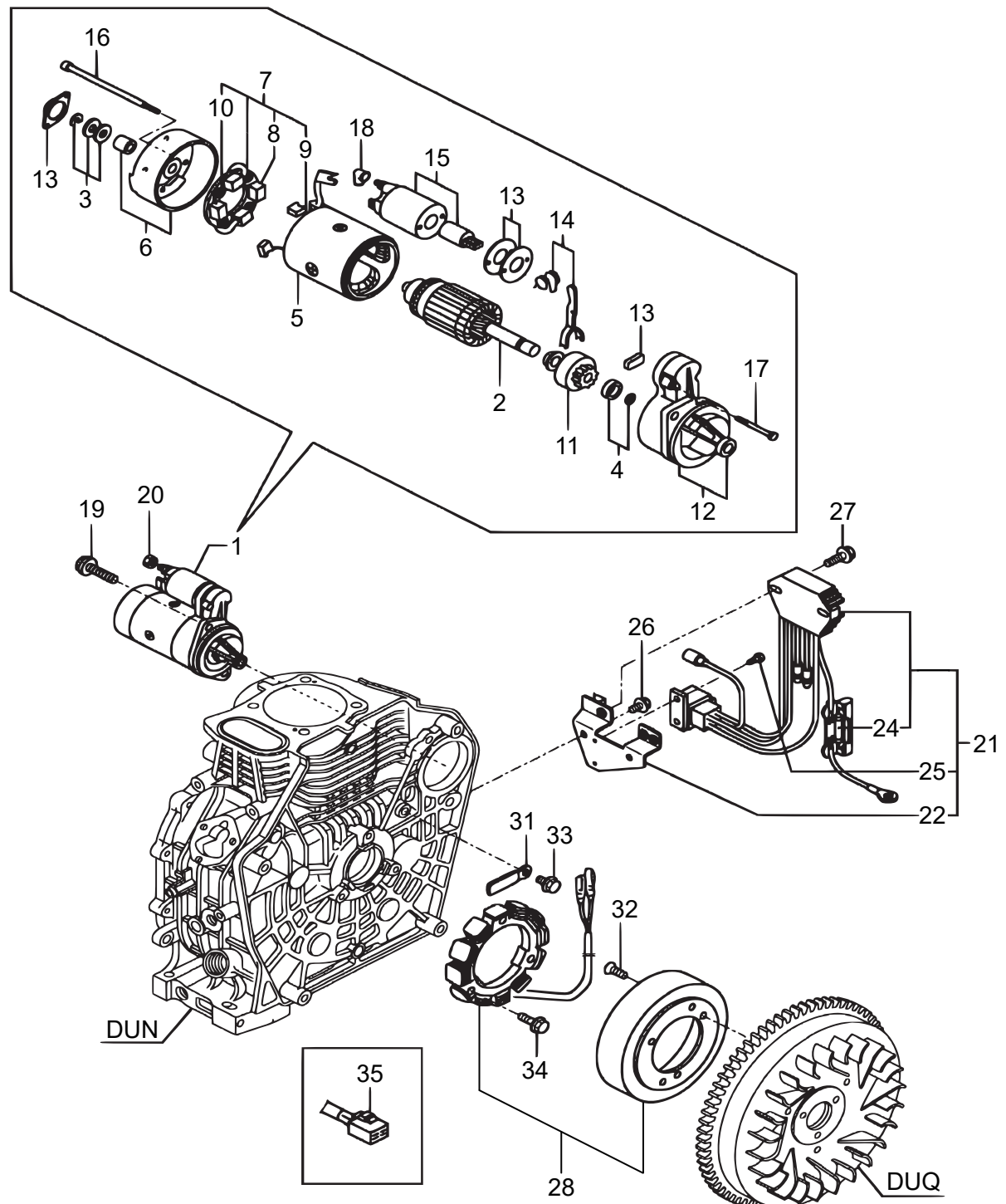
REF NO.	PART NO.	PART NAME	Q' TY	MRK	MK2	REMARKS
1	11422C-55750	TANK FUEL W/GAUGE/L70V6	1	OX		ES56378~
3	114288-55041	CAP ASSY, FUEL TANK	1	OX		ES56378~
3 -1	114288-55081	VALVE, CAP	1			
4	114299-55110	FILTER, FUEL OIL / L70V	1			
5	114239-55150	PIPE, GAUGE /L70N	1		0JH	
6	23080-007000	HOSE CLAMP 7 /L70N	2		0JH	
7	114740-55200	DAMPER, FUEL TANK	4			
8	114239-55130	FILTER , FUEL	1			
10	114210-55210	STAY A, FUEL TANK / L70V	1		0JH	SET W/#
10	114210-55220	STAY A, FUEL TANK / L70V	1		0JH	SET W/%
11	114210-55230	STAY B, FUEL TANK / L70V	1		0JH	
12	114240-55300	COCK AY, FUEL/L70V, N	1	OX		ES56378~
13	24341-000150	O-RING 1A S-15. 0	1			
13	24311-000125	O-RING 1A P-12. 5	1	OX		ES56378~
14	114210-55810	BOLT, LIFTING	1		0JH	
15	22117-080000	WASHER 8	1		SS!0JH	
16	26106-080452	BOLT M 8X 45 PLATED	1			
17	26366-060002	NUT M 6	2			
18	26106-060162	BOLT M 6X 16 PLATED	2			SET W/#
18	114210-55300	SOCKET HEAD BOLT	2		0JH	SET W/%
19	114780-59010	PIPE AY, FUEL OIL	1		!R0228	
20	114780-59060	PIPE, FUELE OIL	1			
21	23080-014000	CLAMP 14	2			
22	114239-59301	PIPE ASSY, RETURN /L70N	1			
23	124722-59050	CLAMP 9	1			
24	124066-59100	CLAMP 8 /L70N	1		0JH	
25	114239-59301	PIPE ASSY, RETURN /L70N	1			
26	114652-59310	TUBE, PROTECT	1		0JH	
27	121750-59890	RETAINER	1		0JH	
28	114210-59800	PIPE, FUEL INJECTION /L70V	1			
34	114210-59850	SUPPORT, INJ. PIPE /L70V	1		0JH	

L70N6-VEMK2

DUV0

STARTER MOTOR & DYNAMO

(E/G. SERIAL NO. AFTER ES03114)



L70N6-VEMK2

STARTER MOTOR & DYNAMO

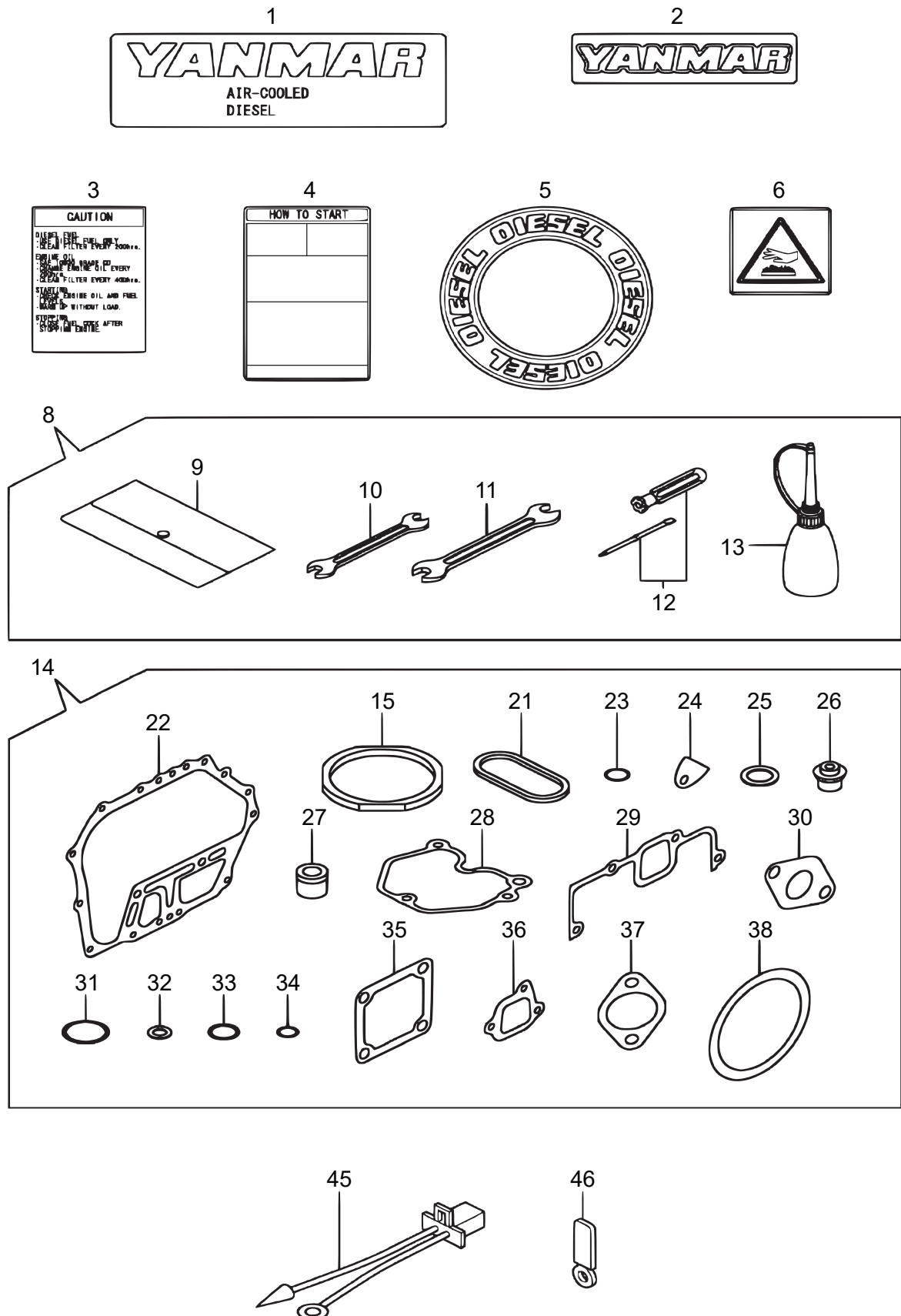
**** DUV ****

REF NO.	PART NO.	PART NAME	Q' TY	MRK	MK2	REMARKS
1	114362-77011	STARTER(S114-414A/L100A	1			
2	114381-77110	ARMATURE	1		0JH	
3	X2114811000	WASHER KIT, THRUST	1		0JH	
4	X2114715500	STOPPER SET, PINION	1		0JH	
5	114381-77130	COIL ASSY, FIELD	1		0JH	
6	114381-77140	COVER, REAR	1		0JH	
7	114371-77160	HOLDER ASSY, BRUSH	1		0JH	
8	114371-79040	BRUSH (-)	2		0JH	
9	114371-79050	BRUSH (+)	1		0JH	
10	114371-79060	SPRING, BRUSH	4		0JH	
11	X211445508	PINION ASSY	1			
12	114381-77151	HOUSING ASSY, GEAR	1		0JH	
13	114371-77170	COVER KIT, DUST	1		0JH	
14	114371-77180	SHIFT LEVER KIT	1			
15	129698-77020	SWITCH, MAGNET	1			
16	119260-77260	BOLT	2		0JH	
17	114371-79070	BOLT M 6X 37	2		SS!0JH	
18	121254-77810	COVER, TERMINAL	1		0JH	
19	26106-100302	BOLT M 10X 30 PLATED	2			
20	26716-080002	NUT M 8	1			
21	114399-77560	REG. & HARNESS AY/L70V-L100V	1			
22	114399-77410	BRACKET, HARNESS / L70N6	1		0JH	
24	114399-78000	FUSE (20A) GARTRIDGE/25MM	1			
25	26023-040102	SCREW M4X10	2			
26	26106-060122	BOLT M 6X 12 PLATED	2			
27	26106-060202	BOLT M 6X 20 PLATED	2			
28	114399-78260	DYNAMO ASSY / L70V	1			
31	160260-78700	CLAMP, WIRE	1			
32	114210-78800	SCREW M6	3		0JH	
33	26106-060122	BOLT M 6X 12 PLATED	1			
34	26106-060202	BOLT M 6X 20 PLATED	3			
35	114351-77520	JOINT	1			

L70N6-VEMK2

DUW0

TOOL, LABEL , GASKET SET & ACCESSORIES



L70N6-VEMK2

TOOL, LABEL, GASKET SET & ACCESSORIES

**** DUW ****

REF NO.	PART NO.	PART NAME	Q' TY	MRK	MK2	REMARKS
1	114299-07101	LABEL, AIR COOLED	1			
2	114299-07111	LABEL, YANMAR	1		0JH	
3	114220-07100	LABEL. CAUTION/L100N	1		0JH	
4	114220-07110	LABEL HOW TO START-E	1			
5	114299-07160	LABEL, DIESEL	1			
6	114220-07130	LABEL, HOT SURFACE/L48N6	1		0JH	
8	114299-92590	TOOL ASSY / L70V	1		0JH	
9	114299-92600	TOOL BAG / L70V	1		0JH	
10	114299-92710	SPANNA	1		0JH	
11	114299-92720	SPANNA	1		0JH	
12	104200-92350	DRIVER, SCREW	1		0JH	
13	28210-000150	FEEDER, OIL	1		!SD	
14	114220-92600	GASKET SET /70N6	1		0JH	
15	114395-01331	GASKET ASSY, CYL. HEAD/L70V	1			
21	114350-01380	O-RING	1			
22	114399-01410	GASKET, CRANK CASE / L70V	1			
23	24311-000180	O-RING 1A P-18.0	2			
24	114250-01841	GASKET	1			
25	22190-160002	SEAL WASHER 16S	2			
26	114350-11341	SEAL, VALVE STEM	2			
27	114771-11461	GASKET, NOZZLE	1			
28	114210-11310	GASKET, BONNET / L70V	1			
29	114210-12210	GASKET, AIR CLEANER	1			
30	114299-13200	GASKET, MUFFLER	1			
31	114299-32570	O-RING, COVER / L70V	1			
32	23414-080000	PACKING 8	1			
33	24341-000224	O-RING 1A S-22.4	1			
34	24341-000150	O-RING 1A S-15.0	1			
35	129100-77510	GASKET, AIR HEATER /L70N	3		0JH	
36	114250-12211	GASKET, AIR CLEANER	2		0JH	
37	114299-12920	GASKET, AIR CLEANER /L70N	1		0JH	
38	114399-21980	GASKET /L70N	1		0JH	
45	105198-78570	HARNESS (C), WIRE	1			
46	160260-78700	CLAMP, WIRE	1			

Mikasa