



OPERATING INSTRUCTIONS

FLEXTOOL DUST COLLECTOR FDC-1M, FDC-1A



Version 1.0 (November 2022)

FOR MORE INFORMATION
CONTACT US ON **1300 353 986** OR VISIT [flextool.com.au](https://www.flextool.com.au)

CONTENTS

Introduction_____ 2
 Application_____ 2
 Function_____ 2
 Hazards And Risks_____ 3
 Operation_____ 4
 Care And Preventive Maintenance_____ 4
 Cleaning And Storage_____ 4
 Trouble Shooting_____ 4
 Technical Data_____ 5

INTRODUCTION

Thank you for your selection of Flextool equipment.

Flextool have specialised in the design and manufacture of quality products since 1951.

We have taken care in the design, manufacture, and testing of this product. Should service or spare parts be required, prompt and efficient service is available from our extensive dealer network.

General Safety Instructions for the Operation of Power Equipment

The goal of Flextool is to produce power equipment that helps the operator work safely and efficiently. The most important safety device for this or any tool is the operator. Care and good judgement are the best protection against injury. All possible hazards cannot be covered in this manual however we have tried to highlight some of the important items, individuals should look for and obey Caution, Warning and Danger signs placed on equipment, and displayed in the workplace. Operators should read and follow safety instructions packed with each product.

Learn how each machine works. Even if you have previously used similar machines, carefully check out each machine before you use it. Get the “feel” of it and know its capabilities, limitations, potential hazards, how it operates, and how it stops.

APPLICATION

The Flextool FDC series of dust collectors have been specifically designed for the safe extraction and capture of concrete dust particles emitted through the use of concrete grinding, cutting and drilling equipment. These dust collectors are designed for use with dry non-combustible dust and general construction debris, it is not suitable for use for picking up liquids.

FUNCTION

The Flextool FDC series of dust collector operates from a standard 240 volt / 10amp power outlet. Prior to connecting the unit to the power socket ensure a clear and safe working environment for operation free from hazards such as explosive gases, wet surface etc.

The machine is designed for vacuuming dry, non-combustible dust with an explosion limit value of 0.1mg/m3.

The operation of the dust collector is controlled by two independent switches which are positioned to the rear of the unit. Turning one switch on allows operation with a single motor, turning both switches on allows operation with two motors.

Dust-laden air is then sucked through the inlet valve at high speed via the suction hose. The air is slowed down by the cyclone and coarse dust particles are separated out, partly by centrifugal force and partly by gravity. Separation is made when air and finer particles pass through the dual filter system. The FDC-1A dust collector has an automatic filter cleaning system with the FDC-1M model using a manually operated system. On both models the separated dust accumulates in the cyclone tank until the machine is switched off, it then drops into the continuous bag system.

In some extreme cases the adhesive ability of the dust must be broken manually. This can be done by gently tapping the side of the tank.

The Flextool FDC series of dust collector are equipped with a 20m continuous bagging system for dust storage. The continuous bagging system can be divided and sealed shut using zip ties that are attached with the machine. Please ensure that the filter cleaning process has been completed before changing the continuous bag system.

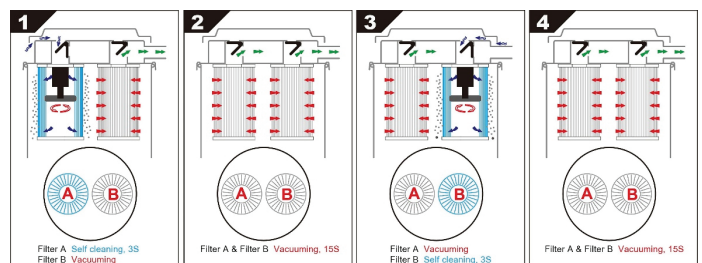
FILTER CLEANING – FDC-1A model only

1. To activate the auto pulse filter cleaning system, turn on the Filter cleaning switch (this switch can remain on during machine operation)
2. The filter cleaning system will automatically switch between filters as they fill with dust and their suction capacity reduces. The filter cleaning process is occurring when the switch indicator light has turned green.

If suction remains poor air filters may require replacement. Prior to assessing filters ensure the unit is switched off at the power outlet and power lead disconnected from the wall outlet.



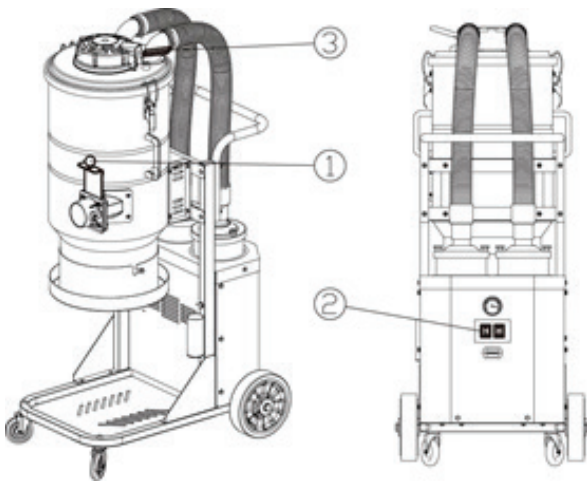
Filter cleaning switch



FILTER CLEANING – FDC-1M model only

1. Close the tank inlet using the shut off gate.
2. Turn on both motors and wait for 3 second.
3. After the machine has built up vacuum pressure, push down on the lever at the top of the tank and hold for 3 seconds.
4. Repeat this process 5 times. (Note: It is important to let the machine rebuild vacuum in between every repetition.
5. Turn off both motors and wait until the dust collector stops completely.

If suction remains poor air filters may require replacement. Prior to assessing filters ensure the unit is switched off at the power outlet and power lead disconnected from the wall outlet.

**HAZARDS AND RISKS**

- NEVER allow any person to operate equipment without adequate instructions.
- ENSURE all operators read, understand, and follow the operating instructions.
- SERIOUS INJURY may result from improper or careless use of this machine

Crystalline silica and silicosis

Flextool Dust Collectors are designed for the safe capture of fine concrete dust particles including crystalline silica that is generated in workplace processes such as crushing, cutting, drilling, grinding, sawing or polishing of stone, concrete and other man-made products that contain silica. Exposure to crystalline silica can be extremely harmful to your health and cause a wide range of respiratory illnesses.

Flextool recommends that all operators of equipment used in the above listed activities familiarise themselves with the "Working with silica and silica containing products" safety handbook available on the Safe Work Australia website:

www.safeworkaustralia.gov.au

ELECTRICAL HAZARDS

- RISK OF FATAL OR SERIOUS INJURY FROM ELECTRICAL SHOCK may arise through incorrect use, operating the equipment where leads and other electrical components are damaged or through ingress of moisture and water.
- ELECTRICAL HAZARDS may be high due to the careless use of equipment and extension lead.
- INSPECT electrical leads, plugs and sockets regularly for damage, if any damage is found isolate equipment and seek immediate repair.
- DO NOT operate the equipment using coiled or tangled extension leads.
- DO NOT operate the equipment where moisture or water is present.
- ENSURE that repairs to the cables and plug electric are carried out by QUALIFIED & LICENCED personnel.
- DO NOT pull or carry by cord, use cord as handle, close a door on cord, or pull cord around sharp edges or corners
- DO NOT clean or service machine when plugged in.

FIRE & EXPLOSION HAZARDS

- SERIOUS RISK OF EXPLOSION may arise when using the machine where flammable or combustible liquids may be present.
- PLACE cord away from heated surfaces.
- DO NOT use this machine to pick up burning or smoking materials such as hot ashes and cigarettes.

ADDITIONAL HAZARDS

- ENSURE ground is firm and level to avoid the equipment from tipping over.
- DO NOT use on wet surfaces this machine is for dry use only.
- TURN OFF all controls before unplugging.
- DO NOT use without dust bag and/or filters in place. Replace collection system and/or filters as described in manual.

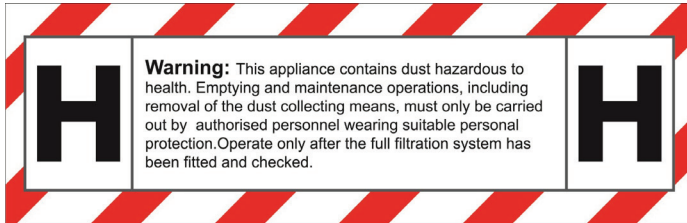
THERMAL PROTECTION

If the thermal protection system is activated, follow the steps below:

1. Turn off machine and unplug power cord from the outlet.
2. Inspect for full dust bag, vacuum hose clog or filter blockage.
3. Thermal protector might take up to 45 minutes to reset.

SAFETY LABEL

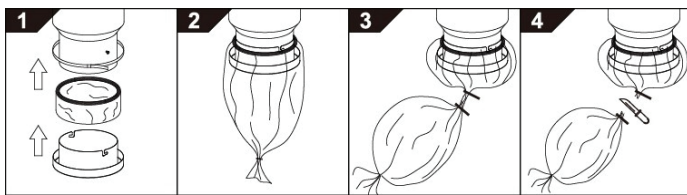
Check all the details presented on the warning label at the front of the dust collector. Ensure to replace label if it becomes damaged or unreadable as failure to follow this label may result in electric shock, injury, or fire.



OPERATION

Before using the machine, ensure that the power & voltage corresponds with the voltage shown on the machines rating plate.

- Check all the dust collector parts are assembled safely and correctly.
- Check the tightness of the hose connection and hose filter.
- Ensure the continuous bag is zip tied.



- Put dust collector near working area and press down the lever to lock the front wheels.
- Turn the switch ON to start operating.

Fitting a new collection bag:

- Release the belt holding the last bag.
- Remove the bag holder ring and slide new bag into place.
- Assemble the holder on to the machine and strap the opening facing upwards with the belt.
- Pull down on the outside of the bag and tie off with a zip tie.

To operate the continuous bag:

- Assemble the continuous bag then turn on the machine.
- Turn off the machine, the dust will drop down to the bags.
- Use a nylon tie to seal the bag
- Cut the bag

CARE AND PREVENTIVE MAINTENANCE

- CAUTION: Prior to undertaking any maintenance ensure the unit is switched off at the power outlet and the power lead is disconnected from the wall outlet.
- Always use personal safety equipment while changing the filter – always wear a dust mask.

Pre-filters

- Unlatch the clamps at the top of the tank and remove the top assembly.
- FDC-1A model - Turn the used pre-filters counterclockwise to loosen and gently place in a plastic bag to contain dust.
- FDC-1M model - Lift out the used pre-filter from the tank and gently place it in a plastic bag to contain dust.
- Insert new filters, refit top assembly and latch clamps into position

Note: While cleaning the Pre-filter take extra care. Do not use compressed air or water.

HEPA filters

- Locate the filter caps at the rear of the dust collector and loosen to the two retaining nuts.
- CAREFULLY lift the filter out and gently place in a plastic bag to contain dust.
- Insert a new filter in reverse order.

Note: The HEPA filter is not designed to be cleaned and reused, when filter has reached the end of it operating life it must be replaced with a new filter.

CLEANING AND STORAGE

- ENSURE to switch off the machine and remove plug from outlet prior to cleaning and servicing.
- AVOID cleaning the machine with a high-pressure cleaner, this can damage filters and electronics.
- Wear proper personnel protective equipment while cleaning the machine.
- All parts which are contaminated after service (ie filters) must be correctly disposed of in plastic bags to contain dust particles according to local disposal regulations.

Note: Please dispose the packaging material and used machine components in an environmentally safe way according to local disposal regulation.

TROUBLE SHOOTING

Symptom	Possible Problem	Solution
Motor not starting	No Power	Plug in machine
	Cable defective	Replace cable
	Switch defective	Replace switch
	Soft start defective	Replace soft start module
Motor stops immediately after starting	Incorrect fuse	Connect to correct fuse
	Shortcut in cable/machine	Send for repair
Motor runs but there is no suction	Hose not connected correctly	Check hose connections
	Hose clogged/blocked	Clean hose
	No dust collection bag	Fit dust collection system
Motor runs but poor suction	Hole in hose	Replace hose
	Filter clogged	Clean/Replace filter
	Loose top cover	Adjust
	Defective gaskets	Replace affected gaskets
Dust blown from motor	Wrongly assembled or damaged filter system	Adjust/Replace filters

TECHNICAL DATA

Model	Operating Weight kg (lb)	Voltage V/Hz	Motor W	Current A	Air Flow m ³ /h (ft ³ /h)	Vacuum mbar	Pre Filter Type	Filtration Type	Filter Cleaning	Dust Collection	Dimensions l x w x h mm (in)	Product Code
FDC-1M	48 (105)	240 50/60	2 x 1200	9.6	400 (1312.3)	240	Conical	2 x H-Class H13	Jet-pulse (manual)	Continuous drop-down bagging system	710 x 570 x 1300 (28 x 22.5 x 51.2)	FT100462-UNIT
FDC-1A	53 (116.8)	240 50/60	2 x 1200	9.6	400 (1312.3)	240	2 x H-Class H11	2 x H-Class H13	Auto-pulsing (automatic)	Continuous drop-down bagging system	710 x 570 x 1300 (28 x 22.5 x 51.2)	FT100463-UNIT



Parchem Construction Supplies Pty Ltd

1956 Dandenong Road, Clayton VIC 3168, Australia

Phone: 1300 353 986

flextool.com.au

ABN 80 069 961 968

This manual summarises our best knowledge of the product based on the information available at the time of publication. You should read this manual carefully and consider the information in the context of how the product will be used. Our responsibility for products sold is subject to our standard terms and conditions of sale.

DISCLAIMER:

Any advice, recommendation, information, assistance or service provided by us in this manual is given in good faith and is believed by us to be appropriate and reliable. However, any advice, recommendation, information, assistance or service provided by us is provided without liability or responsibility PROVIDED THAT the foregoing shall not exclude, limit, restrict or modify the right entitlements and remedies conferred upon any person or the liabilities imposed upon us by any condition or warranty implied by Commonwealth, State or Territory Act or ordinance void or prohibiting such exclusion limitation or modification. The product can be expected to perform as indicated in this manual so long as operation and operational procedures of the individual products are followed as recommended in this manual.

Design and technical specifications may be subject to changes.

Export product variations are only available for sale outside of Australia.

© This publication is copyright. All rights are reserved. Flextool is a registered trade mark of Parchem Construction Supplies Pty Ltd.

FOR MORE INFORMATION

CONTACT US ON 1300 353 986 OR VISIT flextool.com.au