

PARTS LIST

YANMAR DIESEL ENGINE

L70N-VMK
-VEMK
ELECTRIC START

FOR MIKASA PRODUCTS

805-06202

FOR MODEL

MVH-207D/207DS
HYDRAULIC REVERSIBLE COMPACTOR

SPEC. NO. L70N6-VMK (MVH-207D) /EXP MODEL
SPEC. NO. L70N6-VEMK (MVH-207DS) /EU MODEL

MIKASA SANGYO CO., LTD.

PARTS REMARK INDEX

How to read the marks and remarks used in this parts book.

Section 1 : Explanation of Code Use In “MRK” Column

OO : Interchangeable between the new part and the old one.

XX : Not Interchangeable between new and old.

OX : New part is usable for the old machine but the old part is not usable for the new machine.

XO : The old part is usable for the new machine but the new part is not usable for the old machine.

Note : In case of the lack of interchangeability between the new part and old part, a new part may be used by replacing all other parts found in the assembly. In this case, refer to section 2 for instruction on identifying other parts involved in a new assembly.

AD : Newly established(added)

DC : Suspended(discontinued)

NC : Part number changed

QC : Quantity used has been changed

NS : Not supplied individually but supplied in an assembly or a group.

AS : Special part designed to allow interchangeability between new and old part.

CR : Correction

Section 2 : Items Found In “Remark” Column

Serial Numbers - Where indicated, this indicates a serial number range (inclusive) where a particular part is used.

Model Number - Where indicated, this shows that the corresponding part is utilized only with this specific model number or model number variant.

or * : All parts with the same number following # or * belong to the same assembly. this part cannot be interchanged individually with any other assemblies to replace an old part (indicated by #), with a new part(indicated by *), then all other parts of that assembly must be replaced with new ones.

Note : If more than one of the same reference number is listed, the last one listed indicates newest(or latest)part available.

Section 3: Example

REF NO.	PART NO.	PART NAME	QTY	MRK	REMARKS
457(1)	5122-09230	Hinge Metal, Upper/24g	1		-1070 #3 (5)
457(2)	5072-09420	Hinge Metal, Upper M16	1	OX(3)	U1071-(6) * 3(7)

(1) Old part

(2) New part

(3) New part usable with old machine, but old part not usable with new machine (reference section 1).

(4) Old part number is used through this machine serial number.

(5) Old part, used in an assembly with other parts marked with #3. To use this part on a new machine, all other parts in this assembly must be replaced with old ones.

(6) New part put into use starting with this serial number and is still current.

(7) New part used in an assembly with other parts marked * 3, to use this part as a replacement for an old part, all other * 3 marked parts must be changed at the same time.

Section 4: Items Found In “MK2” Column

(only for suspended products)

! OO (“OO” is shown in figure) : The part shown in lower line is supplied.

! SD : Not available due to termination of production.

! NS : Not supplied individually, but supplied in an assembly or a group.

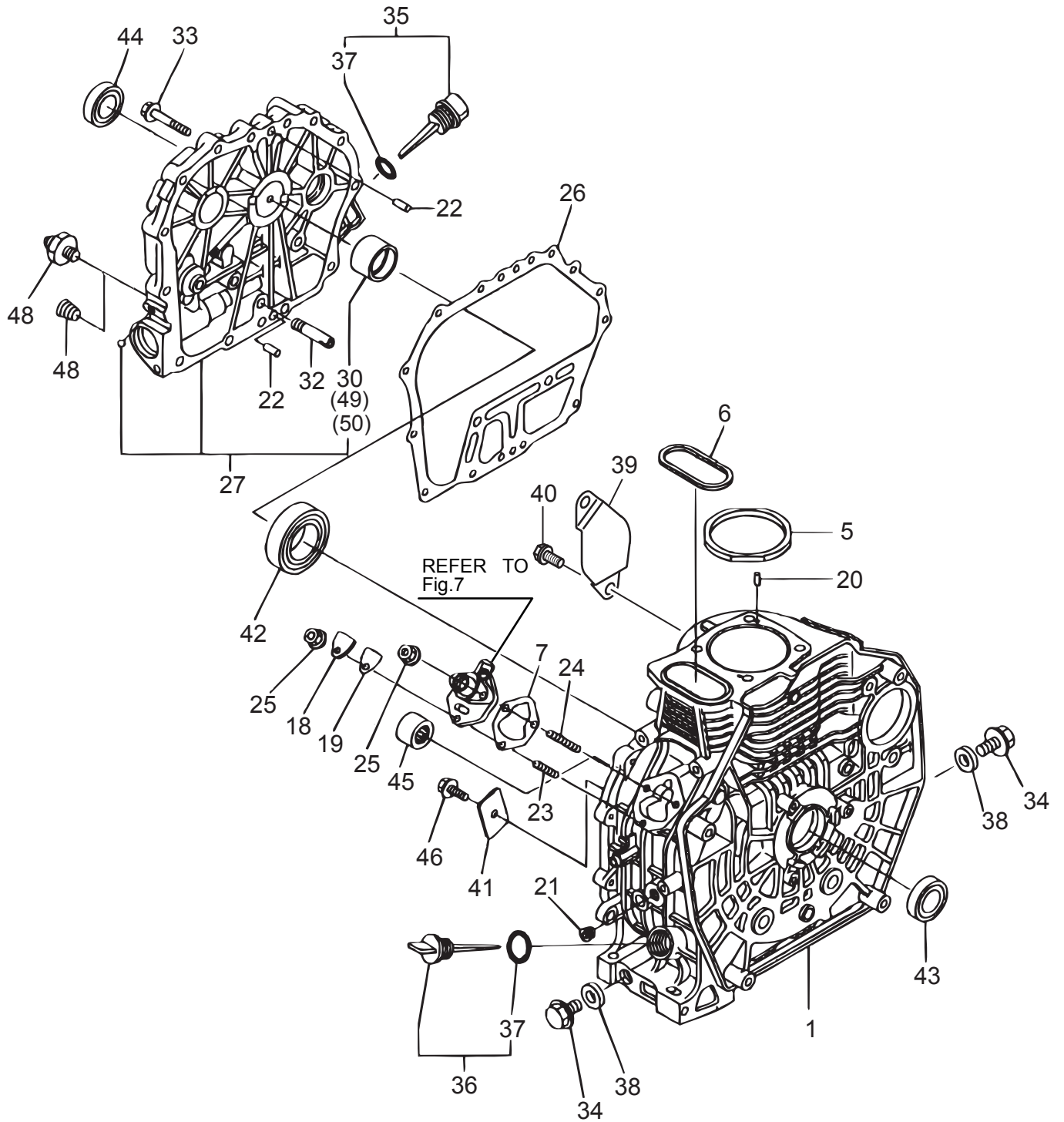
! PD : Supplied as unit product.

SS : Not available after stock run out.

(The contents of this parts catalog are subject to change without notice.)

L70N
1.CYLINDER BLOCK

BEL0



L70N

2008/12/1

1. CYLINDER BLOCK

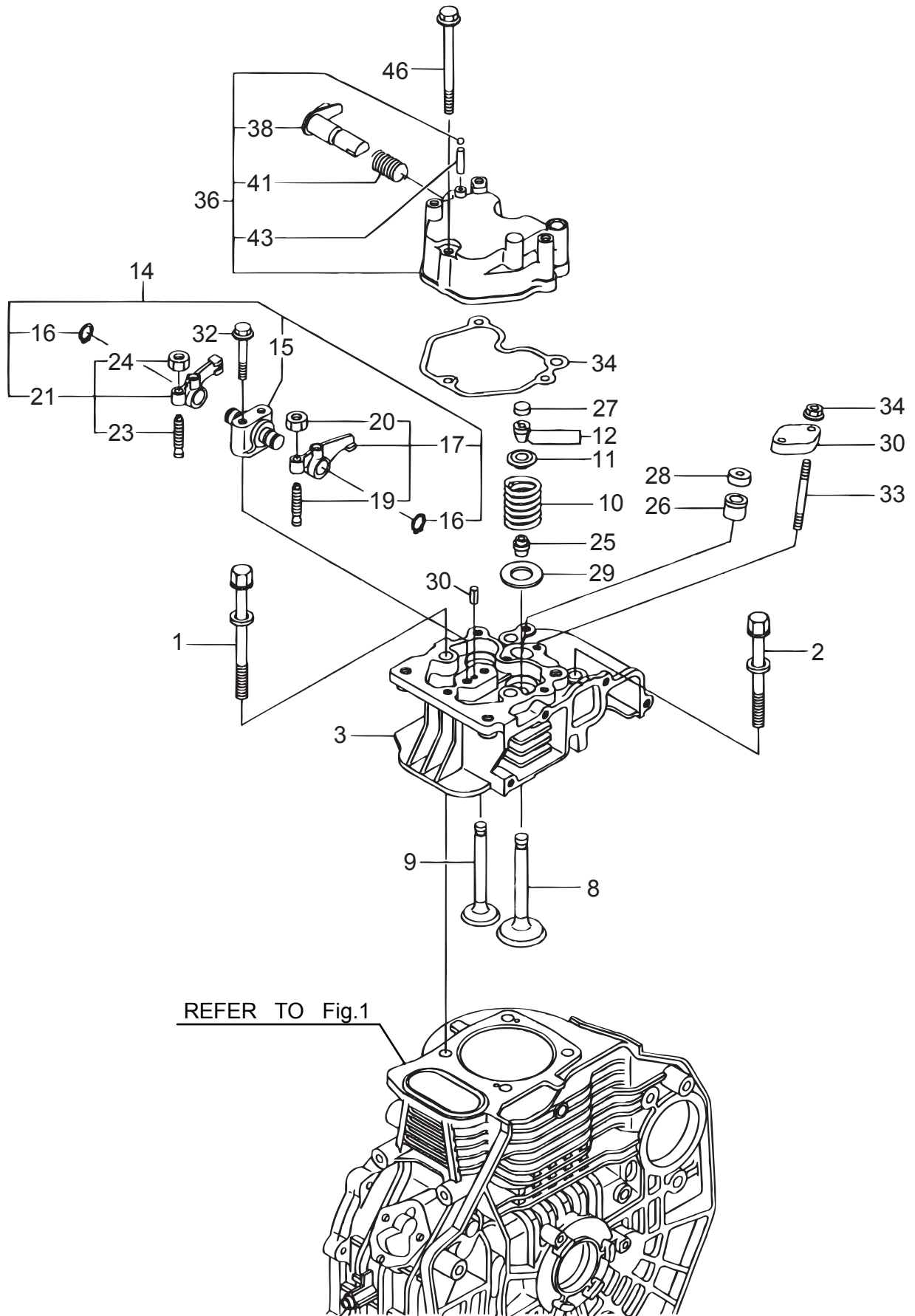
** BEL **

REF NO.	PART NO.	PART NAME	Q' TY	MRK	MK2	REMARKS
1	114210-01020	BLOCK ASSY, CYLINDER /L70N	1			
5	114871-01340	GASKET, CYL. HEAD/L70N	1			
6	114350-01380	O-RING	1			
7	114250-01800	SHIM SET	1			
18	114250-01830	COVER	1			
19	114250-01841	GASKET	1			
20	22312-040080	PIN 4X8 STRAIGHT	2			
21	23875-020000	PLUG PT1/4 STEEL / L70V	1			
22	114270-01600	PARALLEL PIN 8X12	2			
23	26226-060182	STUD M 6X 18 PLATED	1			
24	26226-060222	STUD M 6X 22 PLATED	2			
25	26366-060002	NUT M 6	3			
26	114350-01412	GASKET. CRANK CASE	1			
27	114210-01460	COVER (D, CRANK CASE) /L70V	1			
30	114350-02100	BEARING MAIN	1			
32	114250-35150	PIPE, L. O.	1			
33	26106-080352	BOLT M 8X 35 PLATED	15			
34	105425-01690	PLUG M16	2			
35	114699-01760	CAP, W/LUB, OIL GAUGE	2			
37	24311-000180	O-RING 1A P-18.0	2			
38	22190-160002	SEAL WASHER 16S	2			
39	114350-01700	COVER, STARTER	1			L70N-VMK
40	26106-100122	BOLT M10X 12 PLATED	2			L70N-VMK
41	114299-02030	RETAINER	1			
42	114350-02113	BALL. BEARING	1			
43	160110-02220	SEAL, OIL	1			
44	160110-02220	SEAL, OIL	1			
45	24162-152116	NEEDLE BEARING	1			
46	26106-080122	BOLT M 8X 12 PLATED	1			
47	121252-39450	SENDER, OIL PRESSURE	1			
48	23876-010000	PLUG PT1/8, SCREW	1			
49	114350-02200	MAIN BEARING, US=0.25	1			
50	114350-02210	MAIN BEARING US=0.50	1			

L70N

BEM0

2.CYLINDER HEAD&BONNET



L70N

2008/12/1

2. CYLINDER HEAD & BONNET

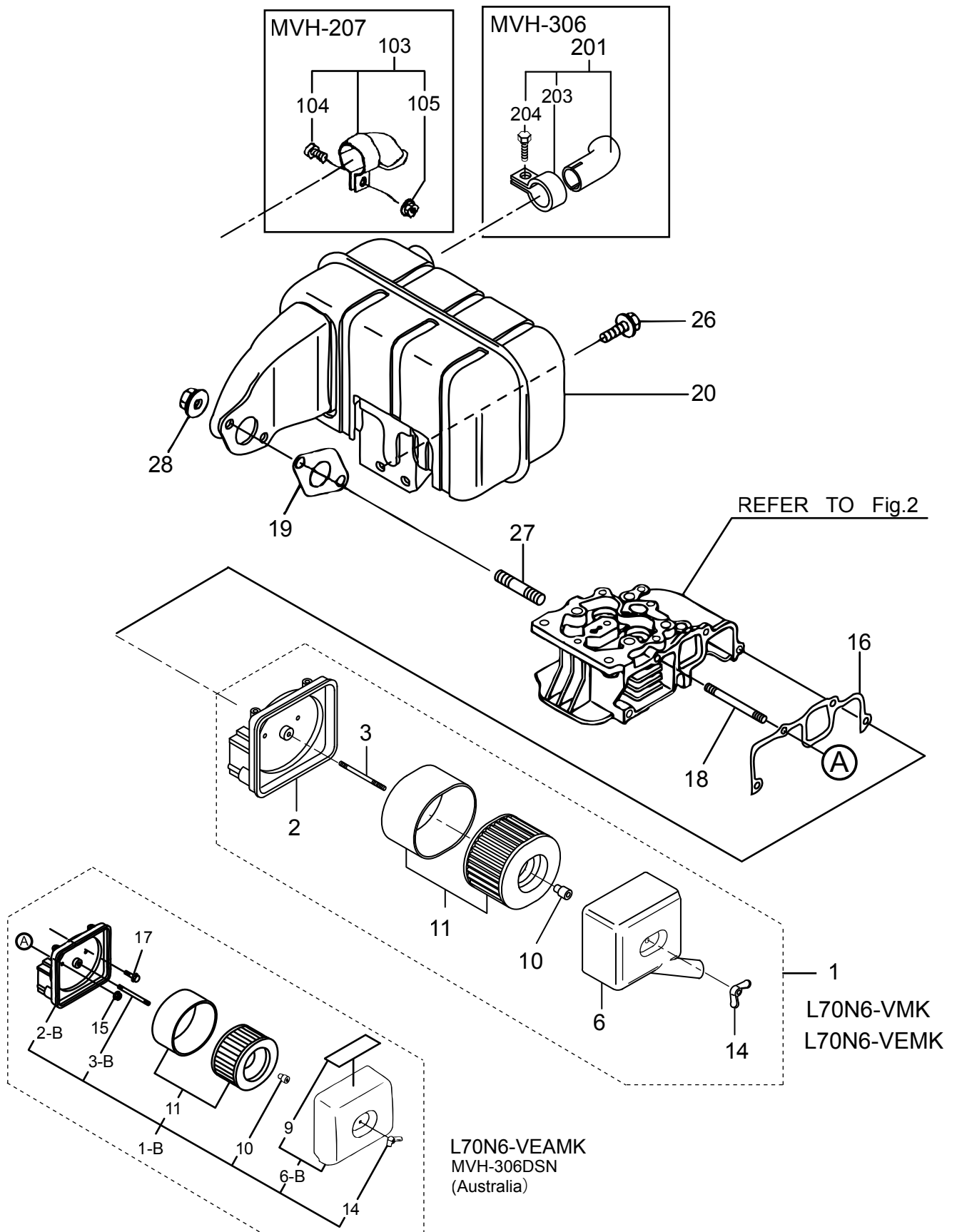
** BEM **

REF NO.	PART NO.	PART NAME	Q' TY	MRK	MK2	REMARKS
1	114210-01200	BOLT, CYL. HEAD A / L70V	2			
2	114210-01210	BOLT, CYL. HEAD B / L70V	2			
3	114220-11020	HEAD ASSY, CYLINDER /L70N	1			
8	114210-11100	VALVE, INTAKE / L70V	1			
9	114210-11110	VALVE, EXHAUST / L70V	1			L70N-VMK
10	114210-11120	SPRING, VALVE	2			
11	114210-11180	RETAINER, SPRING	2			
12	114210-11930	COTTER ASSY	2			
14	114210-11250	SUPPORT ASSY ROCKER /L70V	1			
15	114210-11260	SUPPORT, ROCKER ARM / L70V	1			
16	114210-11280	C TYPE RETAINING PIN/L70V	2			
17	114210-11650	ARM ASSY, INTAKE / L70V	1			
19	114299-11240	SCREW, ADJUSTING / L70V	1			
20	26856-060002	LOCK NUT 6	1			
21	114210-11660	ARM ASSY, EXHAUST / L70V	1			
23	114299-11240	SCREW, ADJUSTING / L70V	1			
24	26856-060002	LOCK NUT 6	1			
25	114350-11340	SEAL, VALVE STEM	2			
26	114339-11451	PROTECTOR, NOZZLE /L70N	1			
27	105010-11490	CAP, VALVE	2			
28	114339-11551	GASKET, NOZZLE /L70N	1			
29	114250-11600	WASHER	2			
30	114210-11901	RETAINER NOZZLE /L70N	1			
31	22351-040008	SPRING PIN 4X 8	1			
32	26106-060402	BOLT M6X40 PLATED	2			
33	26226-060552	STUD M 6X 55	2			
34	26366-060002	NUT M 6	2			
35	114210-11310	GASKET, BONNET / L70V	1			
36	114210-11950	BONNET ASSY, HEAD / L70V	1			
38	114210-03590	SHAFT ASSY, DECOMP / L70V	1			
41	114299-03640	SPRING, DECOMP / L70V	1			
43	22312-030160	PARALLEL PIN 3X16	1			
46	26106-060552	BOLT M 6X 55 PLATED	3			

L70N6 - VMK / VEMK / VEAMK

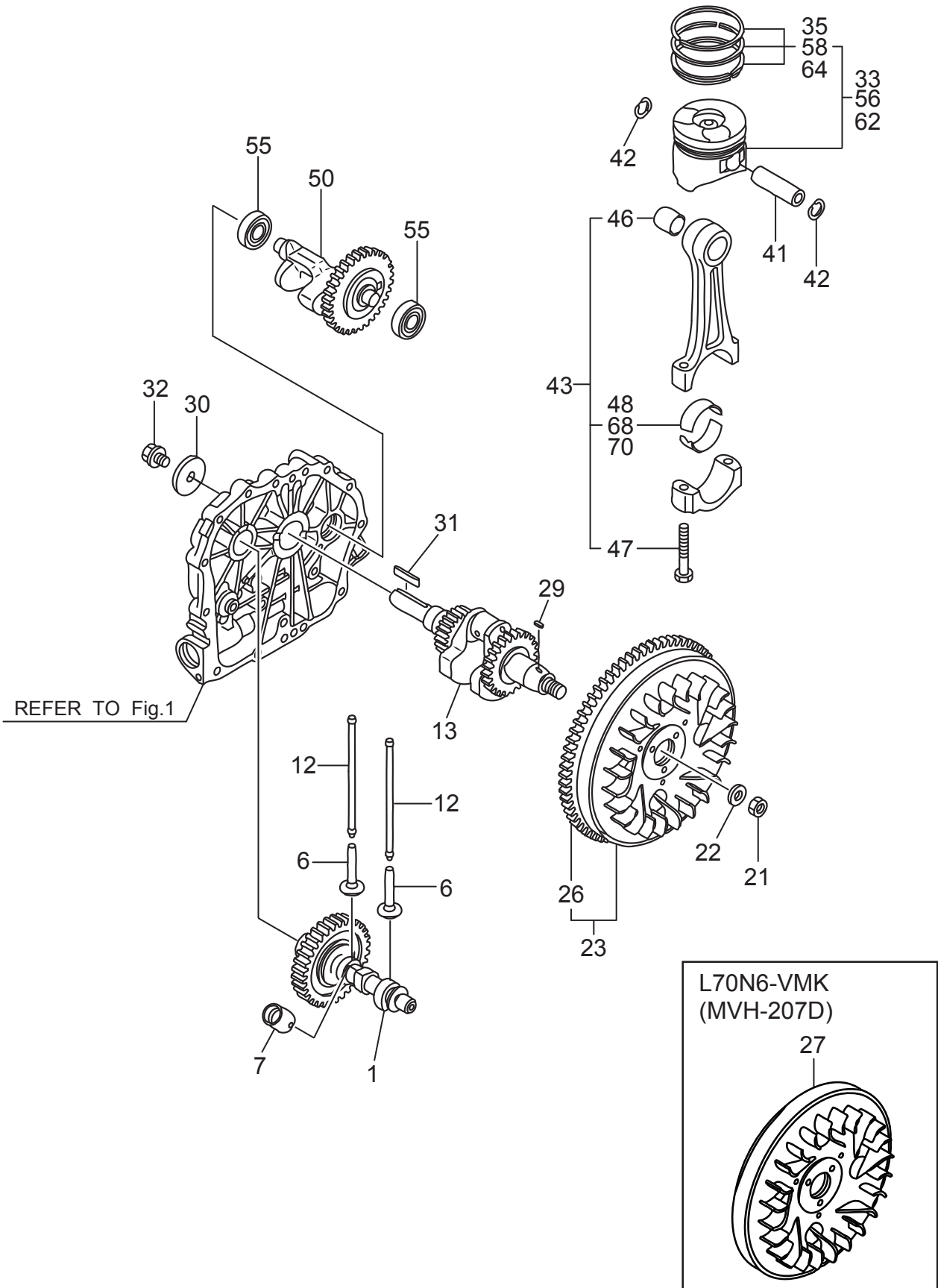
BEN0

3.AIR CLEANER&MUFFLER / エアクリーター&マフラー



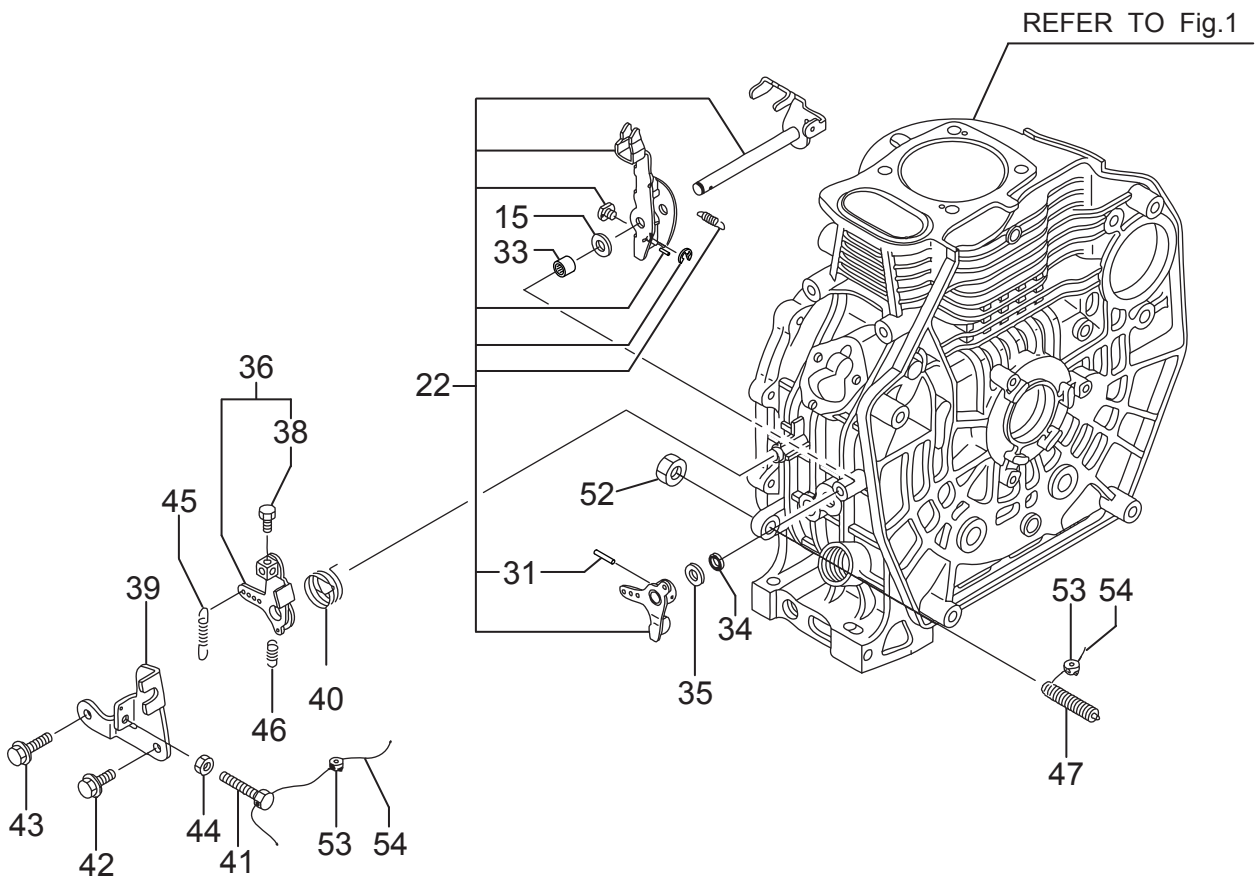
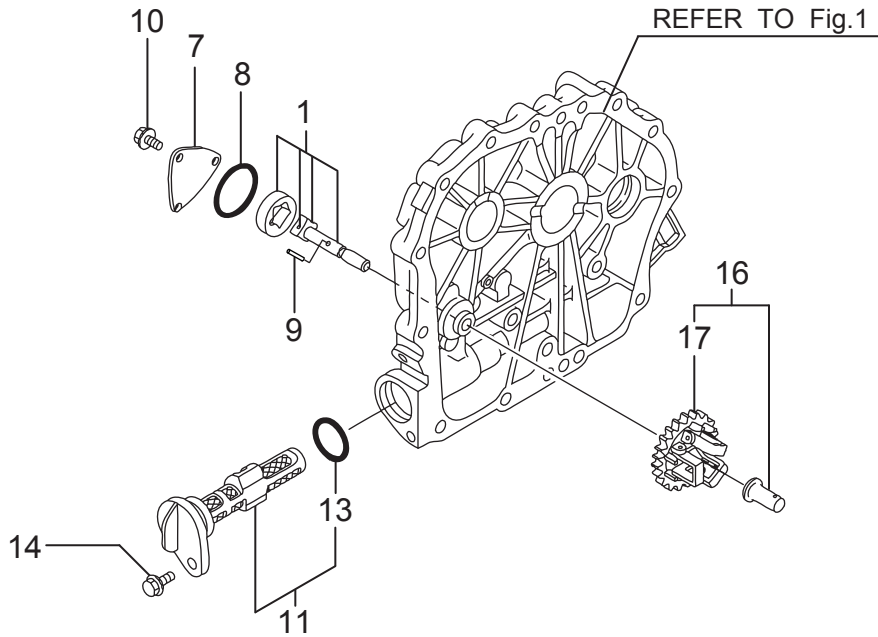
L70N

4.CRANKSHAFT,PISTON&CAMSHAFT



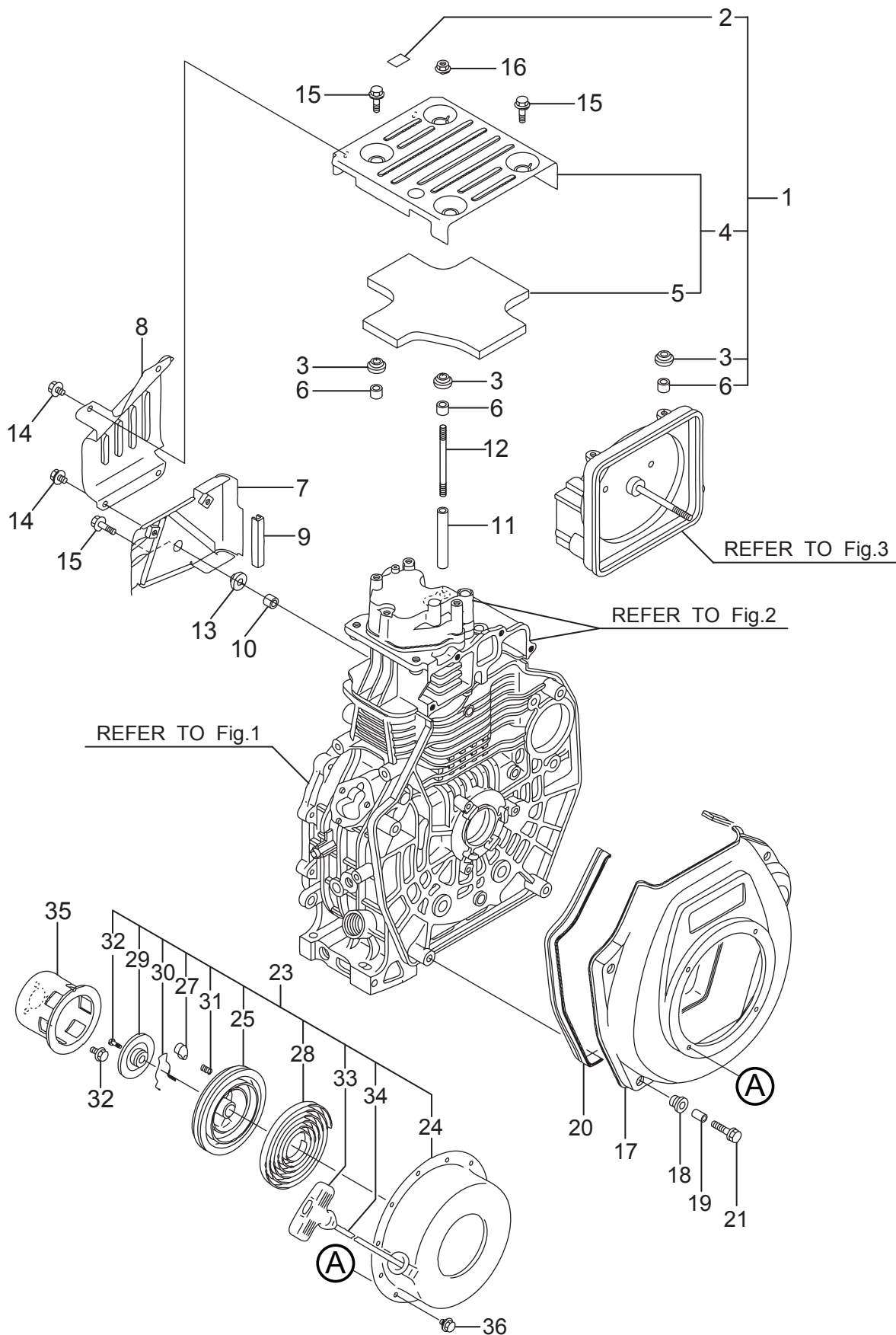
L70N

5. LUB.OIL PUMP&GOVERNOR



L70N

6.COOLING&STARTING DEVICE



L70N

2008/12/1

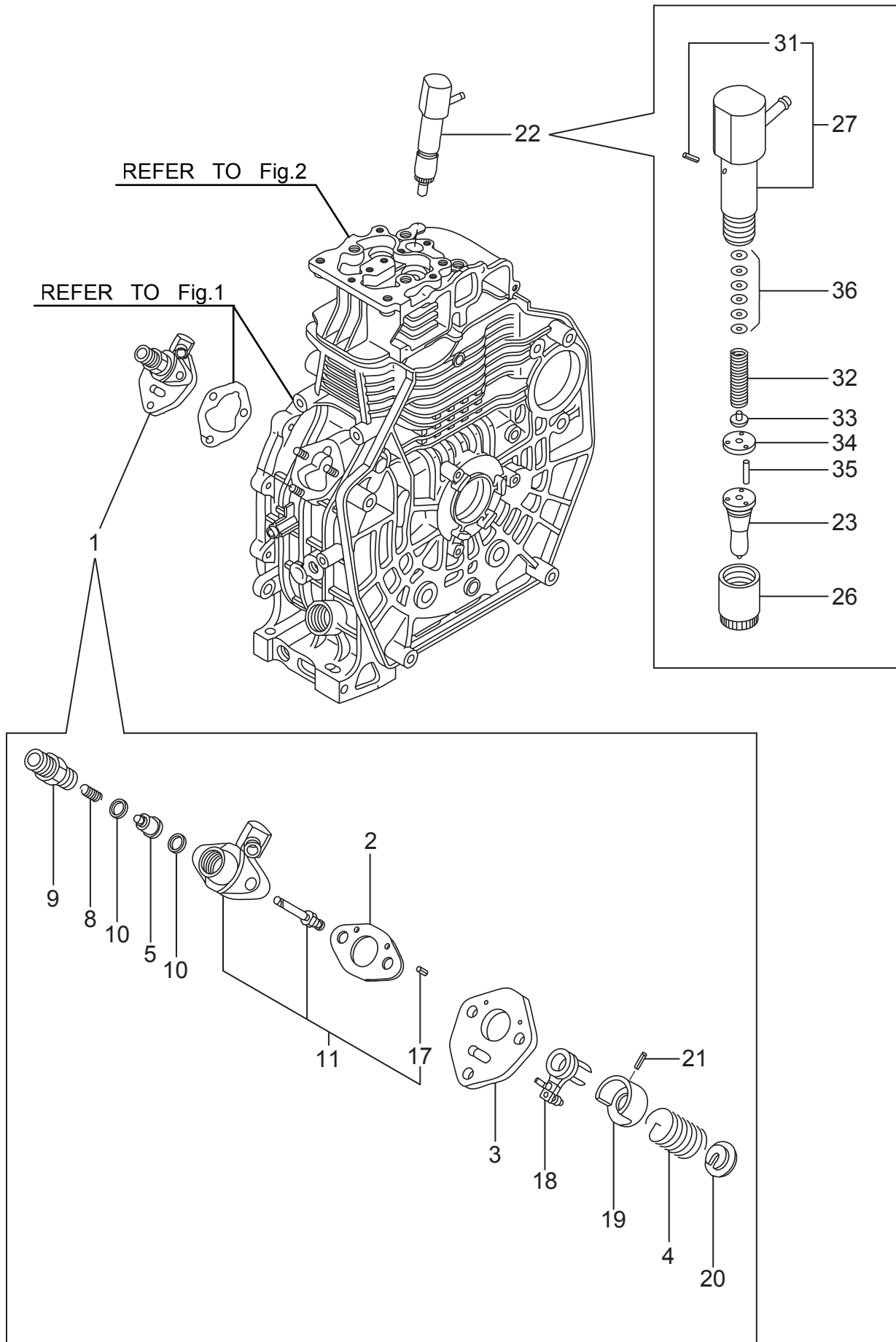
6. COOLING & STARTING DEVICE

** BEQ **

REF NO.	PART NO.	PART NAME	Q' TY	MRK	MK2	REMARKS
1	714210-45100	COVER, TOP /L70N	1			
2	114210-07200	LABEL, DECOMPRESSION	1			
3	114299-45220	GROMMET, TANK	4			
4	114210-45300	COVER, TOP (BLACK) (13) /L70V	1			
5	114210-45310	DAMPER / L70V	1			
6	114399-45340	COLLAR, CYL. COVER / L70V	4			
7	114210-45260	COVER B, SIDE(13) / L70V	1			
8	114210-45270	COVER A, SIDE(13) / L70V	1			
9	114350-45320	RUBBER, SEAL	1			
10	114350-45340	COLLAR	1			
11	114210-45350	SPACER, TOP COVER / L70V	1			
12	114210-45360	STUD BOLT, TOP COVER/L70N	1			
13	183720-55210	GROMMET	1			
14	26106-060082	BOLT M 6X 8 PLATED	4			
15	26106-060202	BOLT M 6X 20 PLATED	4			
16	26366-060002	NUT M 6	1			
17	114210-45101	FAN CASE (GRAY) (2K) /L70N	1			
18	114250-45301	RUBBER, CUSHION	4			
19	114250-45310	COLLAR	4			
20	114650-45330	SEAL, FAN CASE	1			
21	114370-45351	BOLT, FAN CASE	4			
23	114399-76251	RICOIL STARTER AY/L70V6	1			
24	114399-76510	CASE, STARTER / L70V	1			
25	114399-76521	REEL, RECOIL /L70N	1			
27	114399-76531	RATCHET /L70N	1			
28	114399-76540	SPRING, SPIRAL / L70V	1			
29	114399-76550	COVER, RATCHET / L70V	1			
30	114399-76560	SPRING	1			
31	114399-76570	SPRING, RETURN	1			
32	114399-76580	SCREW	1			
33	114399-76620	KNOB, STARTER / L70V	1			
34	114399-76630	ROPE, STARTER / L70V	1			
35	114399-76590	PULLEY, STARTER / L70V	1			
36	26106-060082	BOLT M 6X 8 PLATED	4			
37	26106-060122	BOLT M 6X 12 PLATED	3			

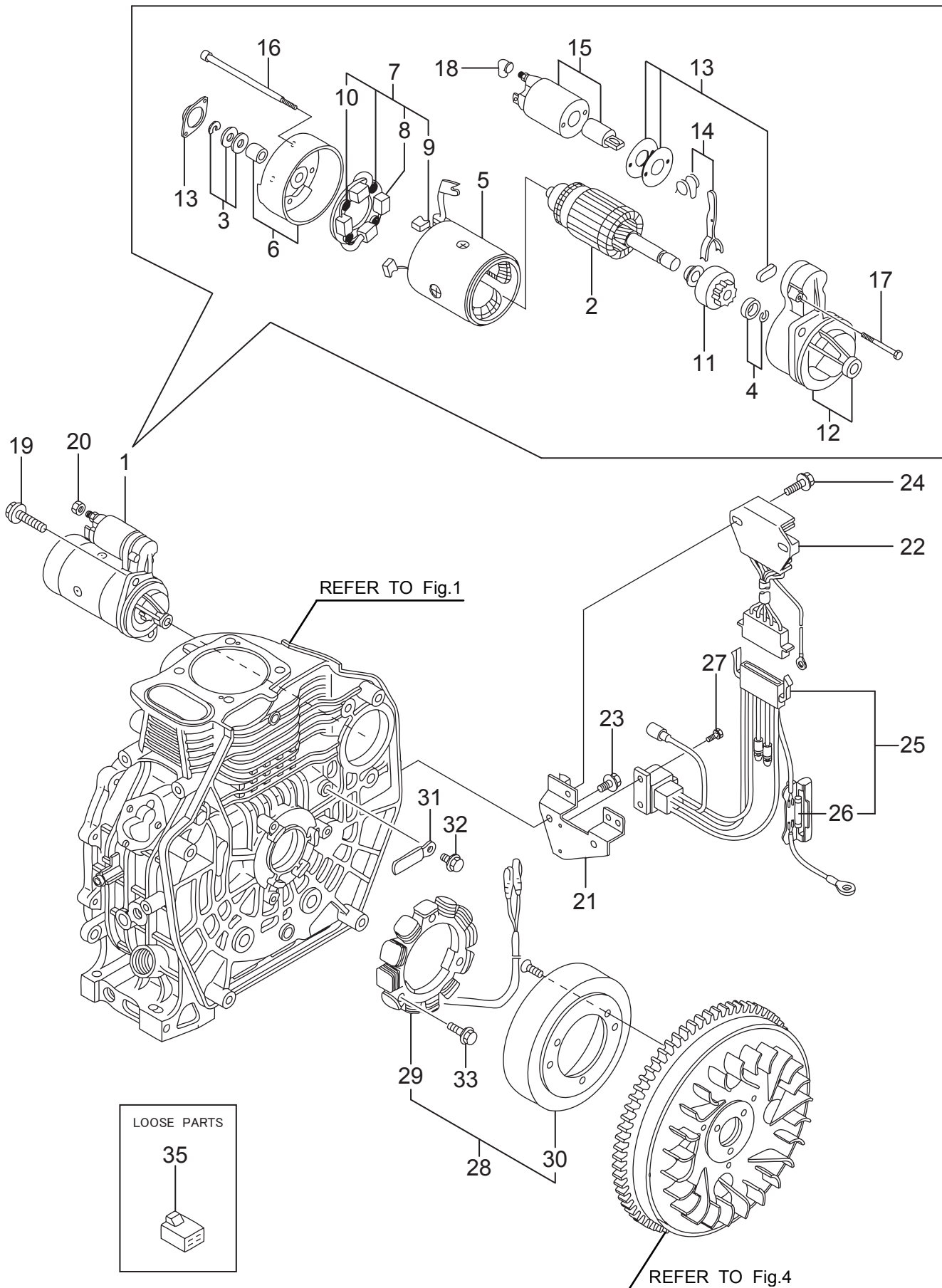
L70N 7.FUEL INJECTION PUMP

BERO



L70N

9.STARTING MOTOR&DYNAMO



L70N

2008/12/1

9. STARTING MOTOR & DYNAMO

** BET **

REF NO.	PART NO.	PART NAME	Q' TY	MRK	MK2	REMARKS
1	114362-77011	STARTER (S114-414A	1			
2	114381-77110	ARMATURE	1			
3	X2114811000	WASHER KIT, THRUST	1			
4	X2114715500	STOPPER SET, PINION	1			
5	114381-77130	COIL ASSY, FIELD	1			
6	114381-77140	COVER, REAR	1			
7	114371-77160	HOLDER ASSY, BRUSH	1			
8	114371-79040	BRUSH (-)	2			
9	114371-79050	BRUSH (+)	1			
10	114371-79060	SPRING, BRUSH	4			
11	X211445508	PINION ASSY	1			
12	114381-77151	HOUSING ASSY, GEAR	1			
13	114371-77170	COVER KIT, DUST	1			
14	114371-77180	SHIFT LEVER KIT	1			
15	129698-77020	SWITCH, MAGNET	1			
16	119260-77260	BOLT	2			
17	114371-79070	BOLT M 6X 37	2			
18	121254-77810	COVER, TERMINAL	1			
19	26106-100302	BOLT M 10X 30 PLATED	2			
20	26716-080002	NUT M 8	1			
21	114385-77400	BRACKET	1			
22	114340-77710	CURRENT LIMITER 15A	1			
23	26106-060122	BOLT M 6X 12 PLATED	2			
24	26106-060202	BOLT M 6X 20 PLATED	2			
25	114351-77540	WIRE CP L100A	1			
26	29411-200000	FUSE (20A), CARTRIDGE	2			
27	26023-040102	SCREW M4X10	2			
28	114351-78290	DYNAMO ASSY /L70N	1			
29	114351-78830	STATOR ASSY 132.1MM/L70N	1			
30	114351-78840	WHEEL (STATOR132.1MM)/L70N	1			
31	160260-78700	CLAMP, WIRE	1			
32	26106-060122	BOLT M 6X 12 PLATED	1			
33	26106-060202	BOLT M 6X 20 PLATED	3			
34	26577-060142	SCREW M 6X 14	3			
35	114351-77520	JOINT	1			

L70N

2008/12/1

10. TOOL, LABEL & GASKET SET

** BEU **

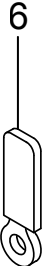
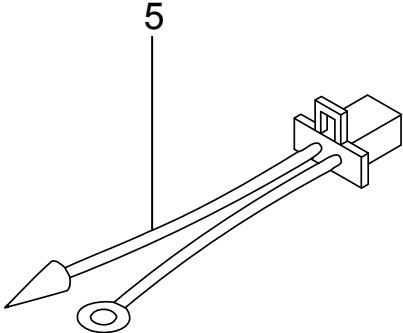
REF NO.	PART NO.	PART NAME	Q' TY	MRK	MK2	REMARKS
1	114250-07090	LABEL, AIR COOLED	1			
2	114250-07111	LABEL, YANMAR	1			
3	114210-07120	LABEL, CAUTION	1			
4	114210-07130	LABEL, HOW TO START-E	1			
5	114261-07350	LABEL	1			
10	714250-92100	TOOL KIT /L70N	1			
11	114250-92600	BAG, TOOL	1			
12	104200-92350	DRIVER, SCREW	1			
13	28110-100120	WRENCH 10X12	1			
14	28110-140170	WRENCH 14X17	1			
15	28210-000150	FEEDER, OIL	1			
16	114239-92600	GASKET SET (NON-ASB.)	1			
17	114871-01330	GASKET. CYL. HEAD CMP	1			
23	114350-01380	O-RING	1			
24	114350-01412	GASKET. CRANK CASE	1			
25	24311-000180	O-RING 1A P-18.0	2			
26	114250-01841	GASKET	1			
27	22190-160002	SEAL WASHER 16S	2			
28	114350-11340	SEAL, VALVE STEM	2			
29	114339-11551	GASKET, NOZZLE /L70N	1			
30	114339-11451	PROTECTOR, NOZZLE /L70N	1			
31	114210-11310	GASKET, BONNET / L70V	1			
32	114210-12210	GASKET, AIR CLEANER	1			
33	114250-13201	GASKET (NON-ASB.)	1			
34	103338-32570	O-RING	1			
35	23414-080000	PACKING 8	1			
36	24341-000224	O-RING 1A S-22.4	1			
37	24341-000150	O-RING 1A S-15.0	1			
38	129100-77510	GASKET, AIR HEATER /L70N	3			
39	114399-21980	GASKET /L70N	1			
40	114299-12920	GASKET, AIR CLEANER /L70N	1			
41	114299-12210	GASKET, AIR CLEANER / L48V	2			

L70N6 - VMK / VEMK / VEAMK

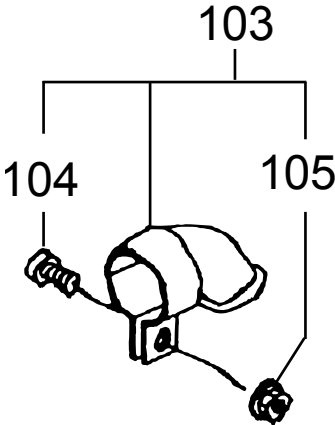
BEV0

11.ACCESSORIES

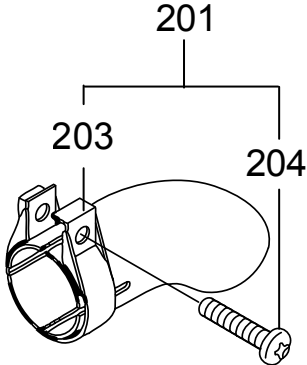
ELECTRIC START ONLY



MVH-207



MVH-306





MIKASA SANGYO CO.,LTD.

HEAD OFFICE
NO. 4-3. 1-CHOME, SARUGAKU-CHO, CHIYODA-KU
TOKYO, JAPAN

<http://www.mikosas.com>