



SPARE PARTS MANUAL

MIKASA REVERSIBLE PLATE COMPACTOR MVH-158DY



Version 2.0 (August 2022)

FOR MORE INFORMATION
CONTACT US ON 1300 353 986 OR VISIT flextool.com.au

EXCLUSIVE TO



Mikasa

REVERSIBLE COMPACTOR

MVH-158DY

PARTS LIST

405-08901

www.mikasas.com

PARTS REMARK INDEX

How to read the marks and remarks used in this parts book.

Section 1 : Explanation of Code Use In "MRK" Column

OO : Interchangeable between the new part and the old one.

XX : Not Interchangeable between new and old.

OX : New part is usable for the old machine but the old part is not usable for the new machine.

XO : The old part is usable for the new machine but the new part is not usable for the old machine.

Note : In case of the lack of interchangeability between the new part and old part, a new part may be used by replacing all other parts found in the assembly. In this case, refer to section 2 for instruction on identifying other parts involved in a new assembly.

AD : Newly established(added)

DC : Suspended(discontinued)

NC : Part number changed

QC : Quantity used has been changed

NS : Not supplied individually but supplied in an assembly or a group.

AS : Special part designed to allow interchangeability between new and old part.

CR : Correction

Section 2 : Items Found In "Remark" Column

Serial Numbers - Where indicated, this indicates a serial number range (inclusive) where a particular part is used.

Model Number - Where indicated, this shows that the corresponding part is utilized only with this specific model number or model number variant.

or * : All parts with the same number following # or * belong to the same assembly. this part cannot be interchanged individually with any other assemblies to replace an old part (indicated by #), with a new part(indicated by *), then all other parts of that assembly must be replaced with new ones.

Note : If more than one of the same reference number is listed, the last one listed indicates newest(or latest)part available.

Section 3: Example

REF NO.	PART NO.	PART NAME	QTY	MRK	REMARKS
457(1)	5122-09230	Hinge Metal, Upper/24g	1		-1070 #3 (5)
457(2)	5072-09420	Hinge Metal, Upper M16	1	OX(3)	U1071-(6) * 3(7)

(1) Old part

(2) New part

(3) New part usable with old machine, but old part not usable with new machine (reference section 1).

(4) Old part number is used through this machine serial number.

(5) Old part, used in an assembly with other parts marked with #3. To use this part on a new machine, all other parts in this assembly must be replaced with old ones.

(6) New part put into use starting with this serial number and is still current.

(7) New part used in an assembly with other parts marked * 3, to use this part as a replacement for an old part, all other * 3 marked parts must be changed at the same time.

Section 4: Items Found In "MK2" Column

(only for suspended products)

! OO ("OO" is shown in figure) : The part shown in lower line is supplied.

! SD : Not available due to termination of production.

! NS : Not supplied individually, but supplied in an assembly or a group.

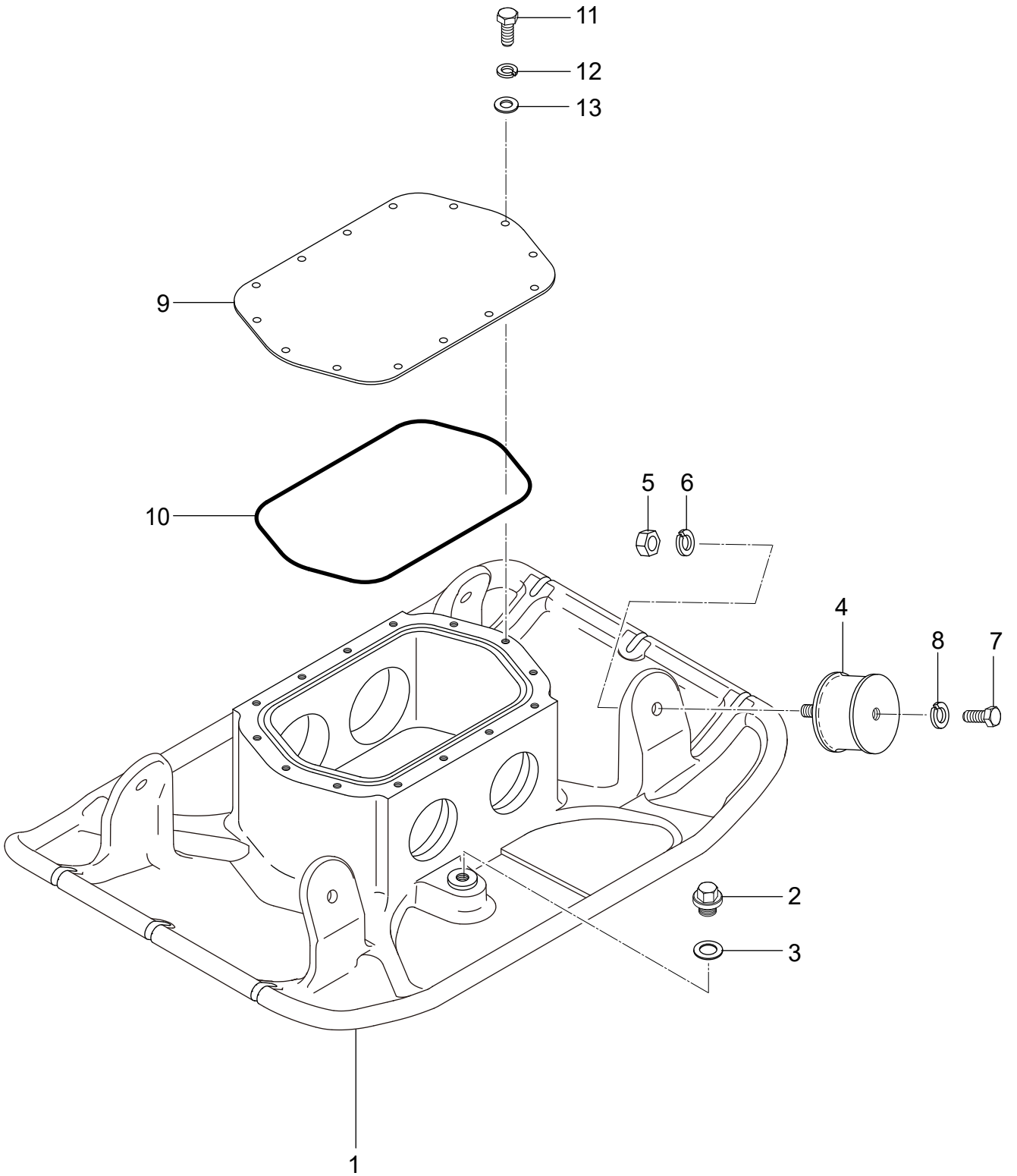
! PD : Supplied as unit product.

SS : Not available after stock run out.

(The contents of this parts catalog are subject to change without notice.)

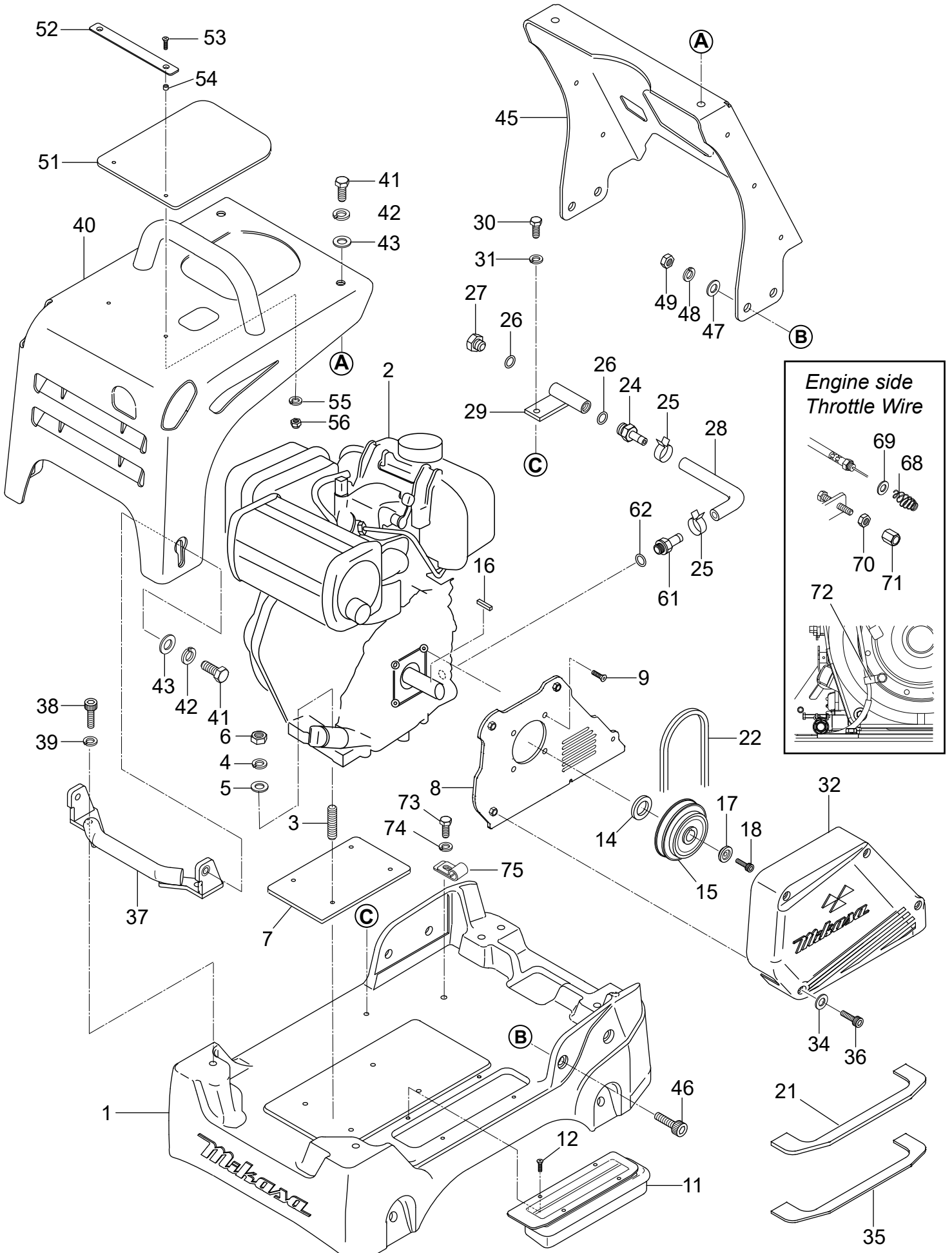
MVH-158DY

VIBRATING PLATE



MVH-158DY

BASE AND ENGINE



MVH-158DY

2020/8/24

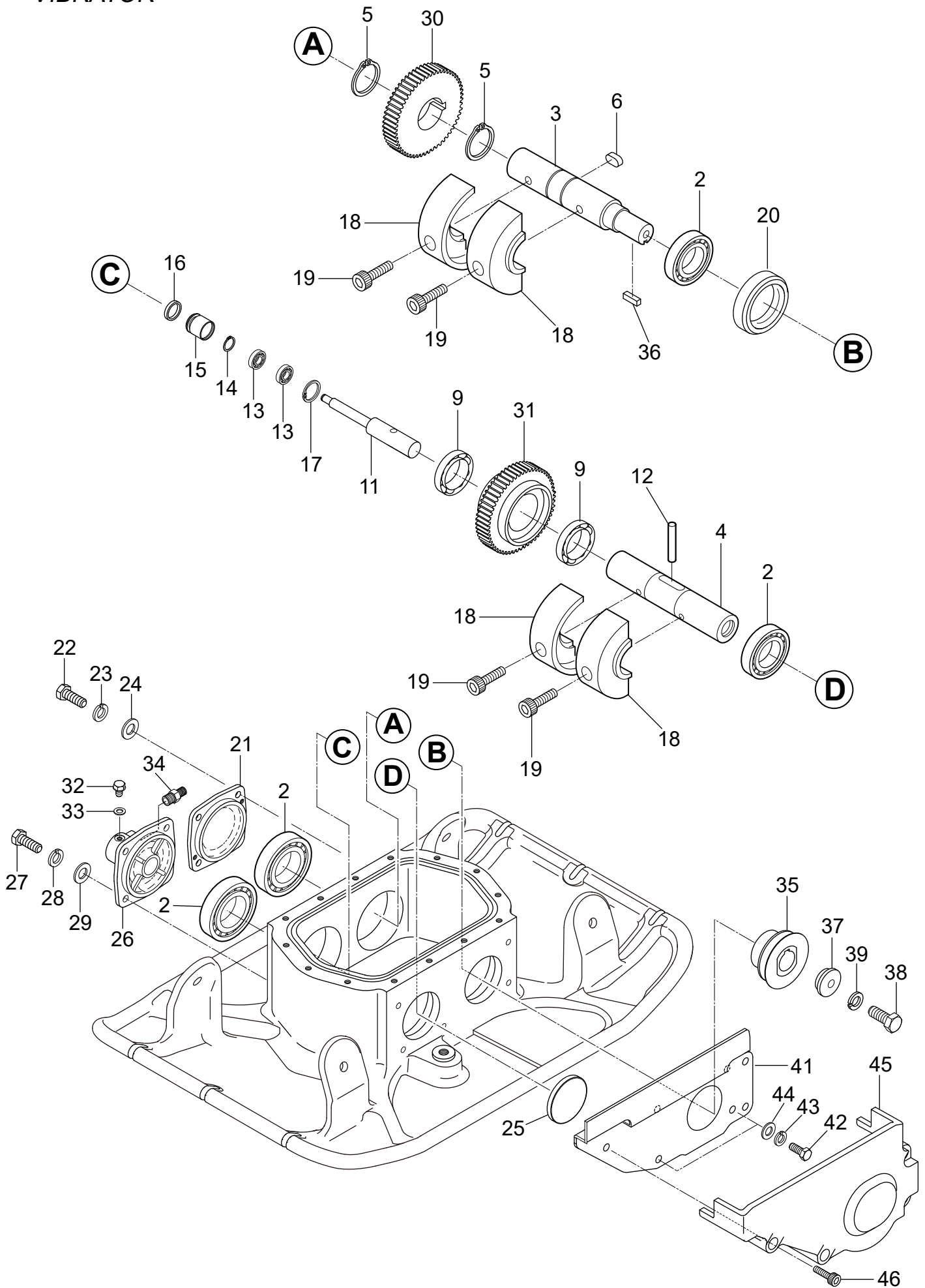
BASE AND ENGINE

**** 4YW ****

REF NO.	PART NO.	PART NAME	Q' TY	MRK	MK2	REMARKS
1	4711-22110	BASE /MVH-158/OJH	1		OJH	
2	9144-04806	ENGINE AY L48N6-VSMK2	1			
3	0091-20206	STUD BOLT 10X45	4			
4	0302-10250	SW M10	4			
5	0311-10160	PW M10	4			
6	0203-10080	NUT M10	4			
7	4714-70120	E/G SPACER(L48) /MVH-158	1			
8	4713-54590	BELT COVER IN(L48) /158	1			
9	0091-20408	SUNK HEAD BOLT 8X20 T	4			
11	4712-19740	DUST COVER /MVH-158	1			
12	0920-06010	FLAT HEAD SCREW 6X10	4			
14	9524-09670	SPACER 20X25X10	1			
15	4583-37770	CLUTCH AY A1-124-20/MVH12	1			
16	22512-050300	KEY 5X 30	1			
17	4714-70090	CLUTCH WASHER /MVH-158	1			
18	0015-20825	SOCKET HEAD BOLT 8X25 T	1			
21	4713-54780	POLYURTHANE SEAT /158	1			
22	0701-00352	V-BELT A-35/RPF3350	1			
24	255-63901-11	UNION	1			
25	9544-10120	HOSE CLAMP	2			
26	9534-10290	GASKET 14X19X2.2	2			
27	9534-10280	PLUG 14X12 P1.5	1			
28	4654-59390	DRAIN HOSE / MVH-406	1			
29	4594-54460	JOINT BLOCK /MVH-150	1			
30	0012-20820	BOLT 8X20 T	1			
31	0302-08200	SW M8	1			
32	4711-22130	BELT COVER (OUT)/MVH-158	1			
34	0339-10220	WASHER (8.4X15.5X1.6)	4			
35	4713-54560	DUST SPONGE (OUT)/MVH-158	1			
36	0015-20851	SOCKET HEAD BOLT 8X55 T	4		OJH	
37	4713-54570	FRONT BUNPER /MVH-158	1			
38	0015-21235	SOCKET HEAD BOLT 12X35 T	2			
39	0302-12300	SW M12	2			
40	4711-22150-GR	FRONT COVER(L48-GR) /MVH-158	1			GREEN
40	4711-22159-OR	FRONT COVER(L48-OR) /MVH-158	1			ORANGE
41	0012-21235	BOLT 12X35 T	4			
42	0302-12300	SW M12	4			
43	0311-12230	PW M12	4			
45	4711-22140	CENTER COVER(D) /158	1			
46	0015-21030	SOCKET HEAD BOLT 10X30 T	4			
47	0311-10160	PW M10	4			
48	0302-10250	SW M10	4			
49	0203-10080	NUT M10	4			
51	4714-70100	RUBBER COVER /MVH-158D	1			
52	4714-70110	STOPPER, COVER/MVH-158	1			
53	0091-20424	SOCKET HEAD BOLT 6X25T	2			
54	6174-65130	COLLAR 6.2X7.8X4.5	2			
55	0302-06150	SW M6	2			
56	0227-10607	NYLON NUT M6	2			
61	4594-55560	UNION, OIL DRAIN(L48) /MVH	1			
62	22190-160002	SEAL WASHER 16S	1			
65	9594-07260	CLIP D6 (FOR M10)	1			
68	9594-09990	COIL SPRING	1			
69	0311-04080	PW M4	1			
70	0204-06040	NUT M6, H=4.2	1			
71	9594-06800	NUT M6 (SPECIAL-L10)	1			
72	9544-10020	CLAMP, D6.5XL95Xt0.8	1		OJH	
73	0012-21015	BOLT 10X15 T	1			
74	0302-10250	SW M10	1			

MVH-158DY

VIBRATOR



MVH-158DY

2020/8/24

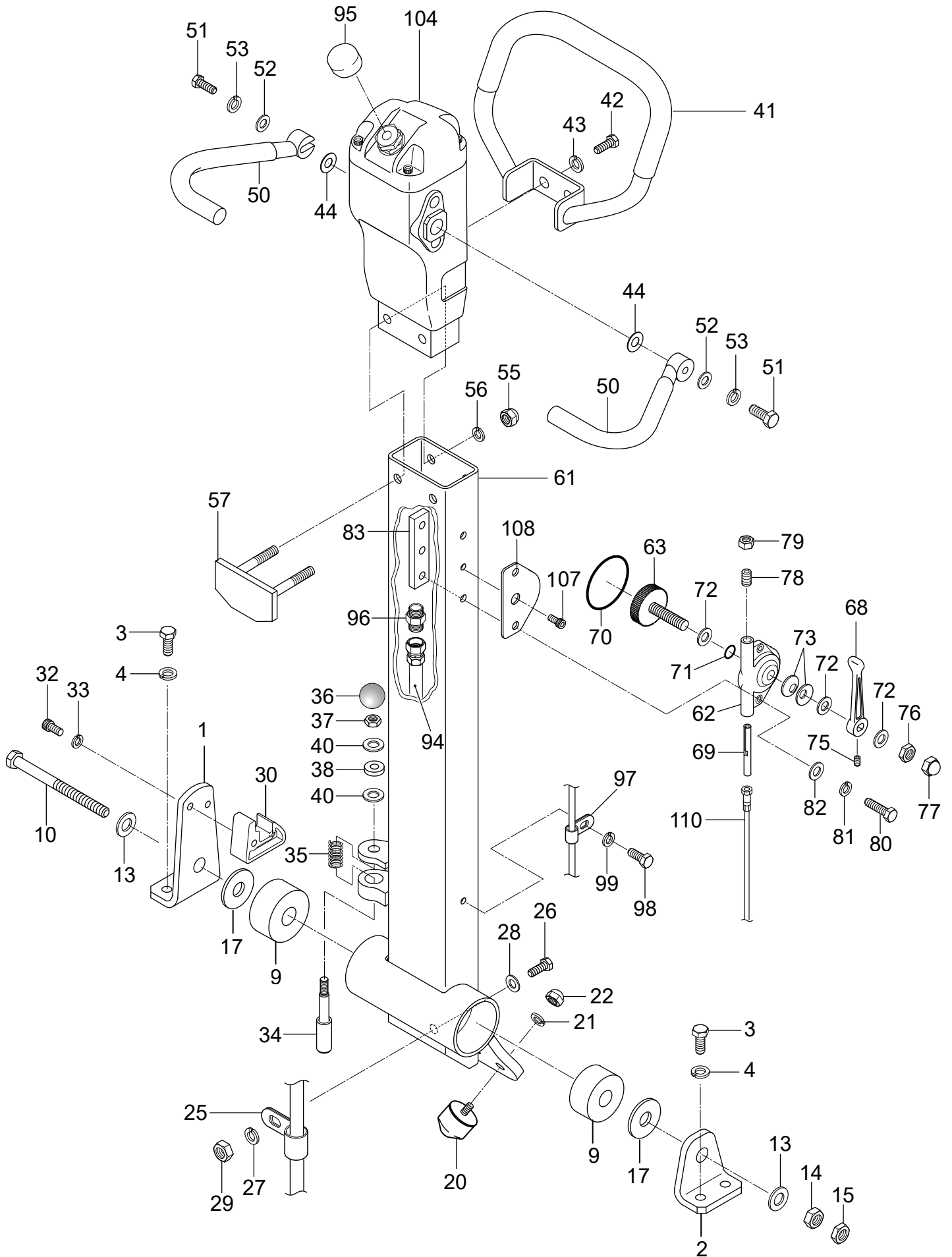
VIBRATOR

**** 4XZ ****

REF NO.	PART NO.	PART NAME	Q' TY	MRK	MK2	REMARKS
2	0479-20090	ROLLER BEARING NJ307MC4	4			
3	4713-54820	ROTARY SHAFT, DRIVE/158	1			
4	4713-54830	ROTARY SHAFT, DRIVEN/158	1			
5	0802-00350	STOP RING S-35	2			
6	9514-05460	KEY 10X8X19 RR	1			
9	0403-06907	BEARING 6907C3	2			
11	4593-46230	PISTON ROD /MVH-150	1			
12	0255-08050	PIN 8X50	1		SX	
13	0425-06000	BEARING 6000ZZSG	2			
14	0802-00100	STOP RING S-10	1			
15	4554-35051	PISTON, 22. 4D /MVH-200	1			
16	4550-10070	PACKING USH-22. 4X30X5	1			
17	0801-00260	STOP RING R-26	1			
18	4714-70390	ECCENTRIC ROTATOR/L48/158	4			
19	0091-20306	SOCKET HEAD BOLT 10X30T	4			
20	0602-02060	OIL SEAL SC-28508	1			
21	4713-54540	BEARING COVER /MVH-158	1			
22	0012-20825	BOLT 8X25 T	4			
23	0302-08200	SW M8	4			
24	0311-08160	PW M8	4			
25	9530-10060	SEAL CAP SC50-8	1			
26	4712-19700	CYLINDER /MVH-158	1			
27	0012-20825	BOLT 8X25 T	4			
28	0302-08200	SW M8	4			
29	0311-08160	PW M8	4			
30	4713-54810	GEAR (DRIVE) /MVH-158	1			
31	4583-42590	GEAR (DRIVEN) /MVH-120, 150	1			
32	0012-20812	BOLT 8X12 T	1		SX	
33	9534-04600	COPPER PACKING 8. 2X16X1. 6	1		SX	
34	9540-10020	CONNECTOR PT, PF1/4	1			
35	4713-54630	PULLEY 77D W/FAN /MVH-150	1			
36	9514-01920	KEY 7X7X30	1			
37	4714-70140	WASHER, PULLEY/MVH-158	1			
38	0012-20830	BOLT 8X30 T	1			
39	0302-08200	SW M8	1			
41	4713-54610	GUIDE, BELT COVER/MVH158	1			
42	0012-20820	BOLT 8X20 T	3			
43	0302-08200	SW M8	3			
44	0311-08160	PW M8	3			
45	4712-19680	BELT COVER, LOWER/MVH-158	1			
46	0015-20852	SOCKET HEAD BOLT 8X60 T	4			

MVH-158DY

OPERATION



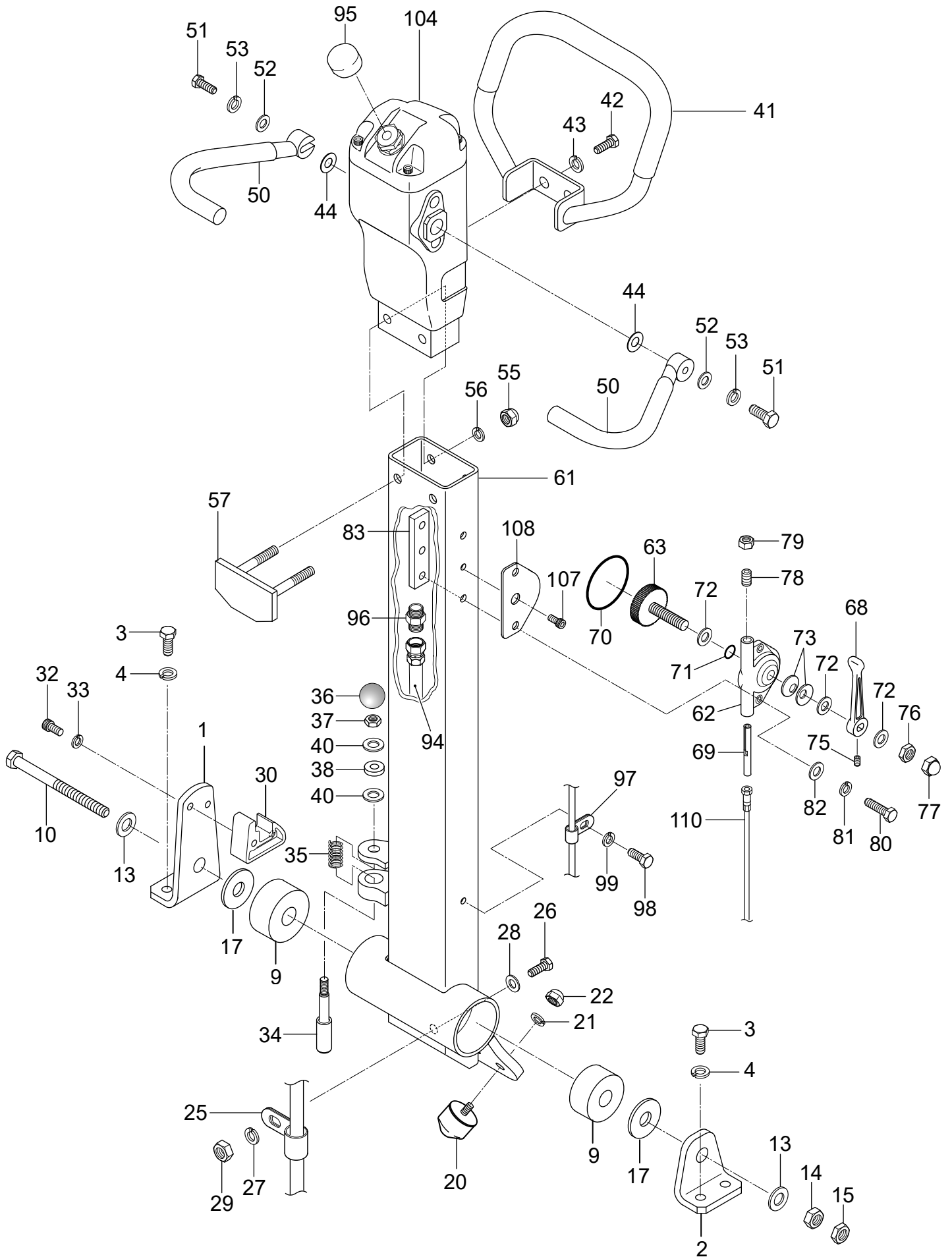
OPERATION

** 4YA **

REF NO.	PART NO.	PART NAME	Q' TY	MRK	MK2	REMARKS
1	4713-54640	HANDLE BRACKET (R)/MVH158	1			
2	4593-38030	HANDLE BRACKET (L)/MVH-150	1			
3	0012-21230	BOLT 12X30 T	4			
4	0302-12300	SW M12	4			
9	4704-68900	CUSHION RUBBER 16X50X30	2			
10	0012-21680	BOLT 16X200 T	1			
13	0311-16260	PW M16	2			
14	0203-16130	NUT M16	1			
15	0204-16100	NUT M16, H=10	1			
17	9524-09690	WASHER 17X45X4.5	2			
20	9390-10490	STOPPER RUBBER 38X20H/158	2			
21	0302-08200	SW M8	2			
22	0221-30806	CAP NUT M8	2			
25	9594-08930	CLIP 15(M6) /MVH-308	1			
26	0012-20625	BOLT 6X25 T	1			
27	0302-06150	SW M6	1			
28	0311-06100	PW M6	1			
29	0203-06050	NUT M6	1			
30	4713-54710	HANDLE ROCK STOPPER/158	1			
32	0015-20825	SOCKET HEAD BOLT 8X25 T	2			
33	0302-08200	SW M8	2			
34	4714-70170	STOPPER, HANDLE/MVH-158	1			
35	4714-70180	SPRING, STOPPER/MVH-158	1			
36	9594-03460	BALL GRIP 32D-M10	1			
37	0204-10060	NUT M10, H=6	1			
38	4564-49980	RUBBER PACKING 9D-20D-5T	1			
40	0311-10160	PW M10	2			
41	4582-14400-GR	HANDLE GRIP (EXP)-GR /MVH-120	1			GREEN
41	4582-14409-OR	HANDLE GRIP (EXP)-OR /MVH-120	1			ORANGE
42	0012-20820	BOLT 8X20 T	2			
43	0302-08200	SW M8	2			
44	9524-09970	WASHER 13.5X28X1 (BRASS)	2			C1036-
50	4713-54800	LEVER, TRAVEL (LOOP)/MVH158	2			
51	0012-20830	BOLT 8X30 T	2			
52	0311-08160	PW M8	2			
53	0302-08200	SW M8	2			
55	0227-10809	NYLON NUT M8	2			
56	0302-08200	SW M8	2			
57	4583-37480	PUMP HOLDER /MVH-120	1		SXY	
61	4711-22170	HANDLE BAR /MVH-158	1			
62	3623-41550	THROTTLE BODY /MT-55	1			
63	3629-10090	THROTTLE, GEAR CP, W/BOLT	1			
68	3624-55630	THROTTLE LEVER /MT-55	1			
69	3624-55620	SLIDER /MT-55	1			
70	0501-00450	O-RING G-45	1			
71	0502-00100	O-RING P-10	1			
72	0311-10160	PW M10	3			
73	0321-10180	CONICAL SPRING WASHER M10	2			
75	0962-06006	SOCKET HEAD SCREW 6X6	1			
76	0204-10060	NUT M10, H=6	1			
77	0221-31008	CAP NUT M10	1			
78	0962-08020	SOCKET HEAD SCREW 8X20	1			
79	0204-08050	NUT M8, H=5	2			
80	0012-20625	BOLT 6X25 T	2			
81	0302-06150	SW M6	2			
82	0311-06100	PW M6	2			
83	4634-55960	THROTTLE NUT /MVH-R60	1			
94	9540-02850	OIL HOSE 985L /MVH-120V	1			
95	4584-51630	BREATHER CAP/ MVH-100/150	1			
96	9540-03150	MALE CONNECTOR, O-RING 1/4	1			

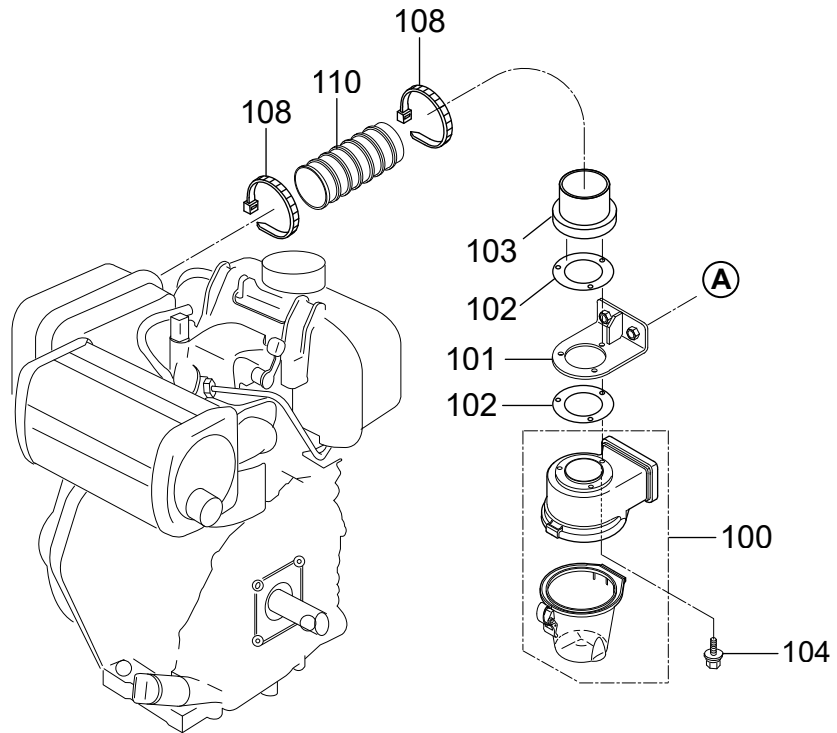
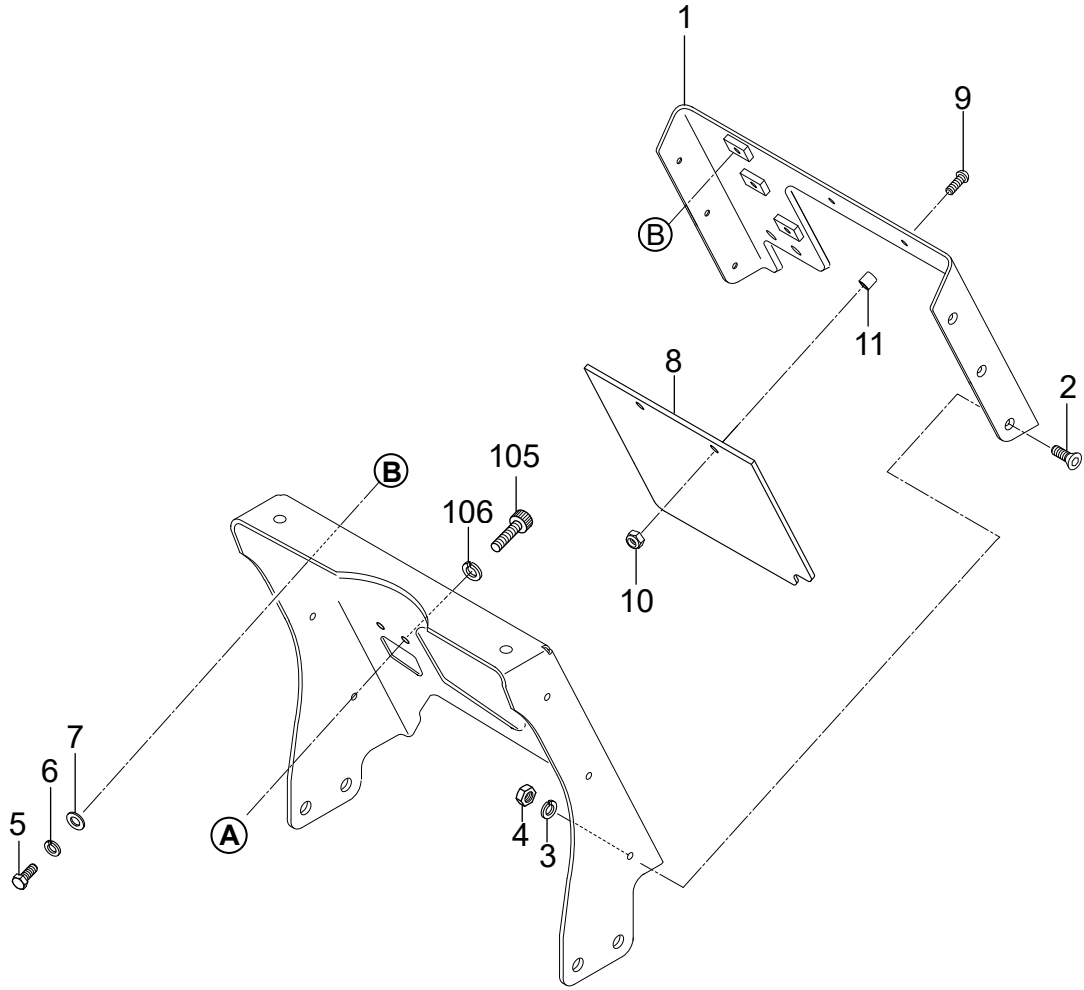
MVH-158DY

OPERATION



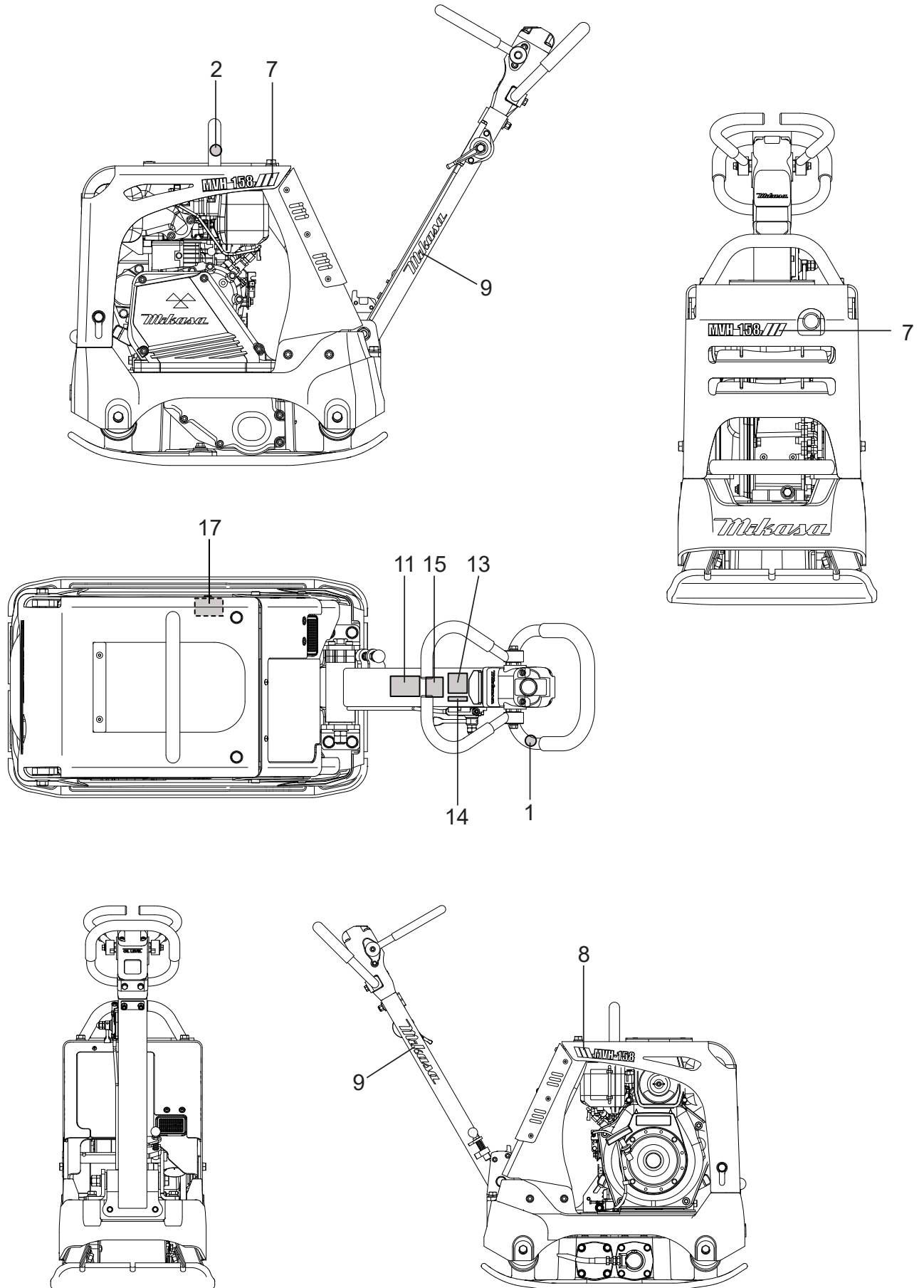
MVH-158 DY

REAR COVER AND CYCLONE CLEANER



MVH-158DY

NAMEPLATE AND DECALS



Mikasa



Parchem Construction Supplies Pty Ltd

1956 Dandenong Road, Clayton VIC 3168, Australia

Phone: 1300 353 986

flextool.com.au

ABN 80 069 961 968

This manual summarises our best knowledge of the product based on the information available at the time of publication. You should read this manual carefully and consider the information in the context of how the product will be used. Our responsibility for products sold is subject to our standard terms and conditions of sale.

DISCLAIMER:

Any advice, recommendation, information, assistance or service provided by us in this manual is given in good faith and is believed by us to be appropriate and reliable. However, any advice, recommendation, information, assistance or service provided by us is provided without liability or responsibility PROVIDED THAT the foregoing shall not exclude, limit, restrict or modify the right entitlements and remedies conferred upon any person or the liabilities imposed upon us by any condition or warranty implied by Commonwealth, State or Territory Act or ordinance void or prohibiting such exclusion limitation or modification. The product can be expected to perform as indicated in this manual so long as operation and operational procedures of the individual products are followed as recommended in this manual.

Design and technical specifications may be subject to changes.

© This publication is copyright. All rights are reserved. Flextool is a registered trade mark of Parchem Construction Supplies Pty Ltd. Mikasa is a registered trade mark of Mikasa Sangyo Co. Ltd, used under licence.

FOR MORE INFORMATION
CONTACT US ON **1300 353 986** OR VISIT flextool.com.au

EXCLUSIVE TO

