



SPARE PARTS MANUAL

MIKASA FLOOR AND ROAD SAW MCD-T18H-PLUS



Version 1.0 (November 2024)

FOR MORE INFORMATION
CONTACT US ON 1300 353 986 OR VISIT flextool.com.au

EXCLUSIVE TO



Mikasa

CONCRETE CUTTER

MCD-T18H-PLUS

PARTS LIST

605-01701

www.mikasas.com

PARTS REMARK INDEX

How to read the marks and remarks used in this parts book.

Section 1 : Explanation of Code Use In “MRK” Column

OO : Interchangeable between the new part and the old one.

XX : Not Interchangeable between new and old.

OX : New part is usable for the old machine but the old part is not usable for the new machine.

XO : The old part is usable for the new machine but the new part is not usable for the old machine.

Note : In case of the lack of interchangeability between the new part and old part, a new part may be used by replacing all other parts found in the assembly. In this case, refer to section 2 for instruction on identifying other parts involved in a new assembly.

AD : Newly established(added)

DC : Suspended(discontinued)

NC : Part number changed

QC : Quantity used has been changed

NS : Not supplied individually but supplied in an assembly or a group.

AS : Special part designed to allow interchangeability between new and old part.

CR : Correction

Section 2 : Items Found In “Remark” Column

Serial Numbers — Where indicated, this indicates a serial number range (inclusive) where a particular part is used.

Model Number — Where indicated, this shows that the corresponding part is utilized only with this specific model number or model number variant.

or * : All parts with the same number following # or * belong to the same assembly. this part cannot be interchanged individually with any other assemblies to replace an old part (indicated by #), with a new part(indicated by *), then all other parts of that assembly must be replaced with new ones.

Note : If more than one of the same reference number is listed, the last one listed indicates newest(or latest)part available.

Section 3: Example

REF NO.	PART NO.	PART NAME	QTY	MRK	REMARKS
457(1)	5122-09230	Hinge Metal, Upper/24g	1		-1070 #3 (5)
457(2)	5072-09420	Hinge Metal, Upper M16	1	OX(3)	U1071-(6) * 3(7)

(1) Old part

(2) New part

(3) New part usable with old machine, but old part not usable with new machine (reference section 1).

(4) Old part number is used through this machine serial number.

(5) Old part, used in an assembly with other parts marked with #3. To use this part on a new machine, all other parts in this assembly must be replaced with old ones.

(6) New part put into use starting with this serial number and is still current.

(7) New part used in an assembly with other parts marked *3, to use this part as a replacement for an old part, all other *3 marked parts must be changed at the same time.

Section 4: Items Found In “MK2” Column

(only for suspended products)

! OO (“OO” is shown in figure) : The part shown in lower line is supplied.

! SD : Not available due to termination of production.

! NS : Not supplied individually, but supplied in an assembly or a group.

! PD : Supplied as unit product.

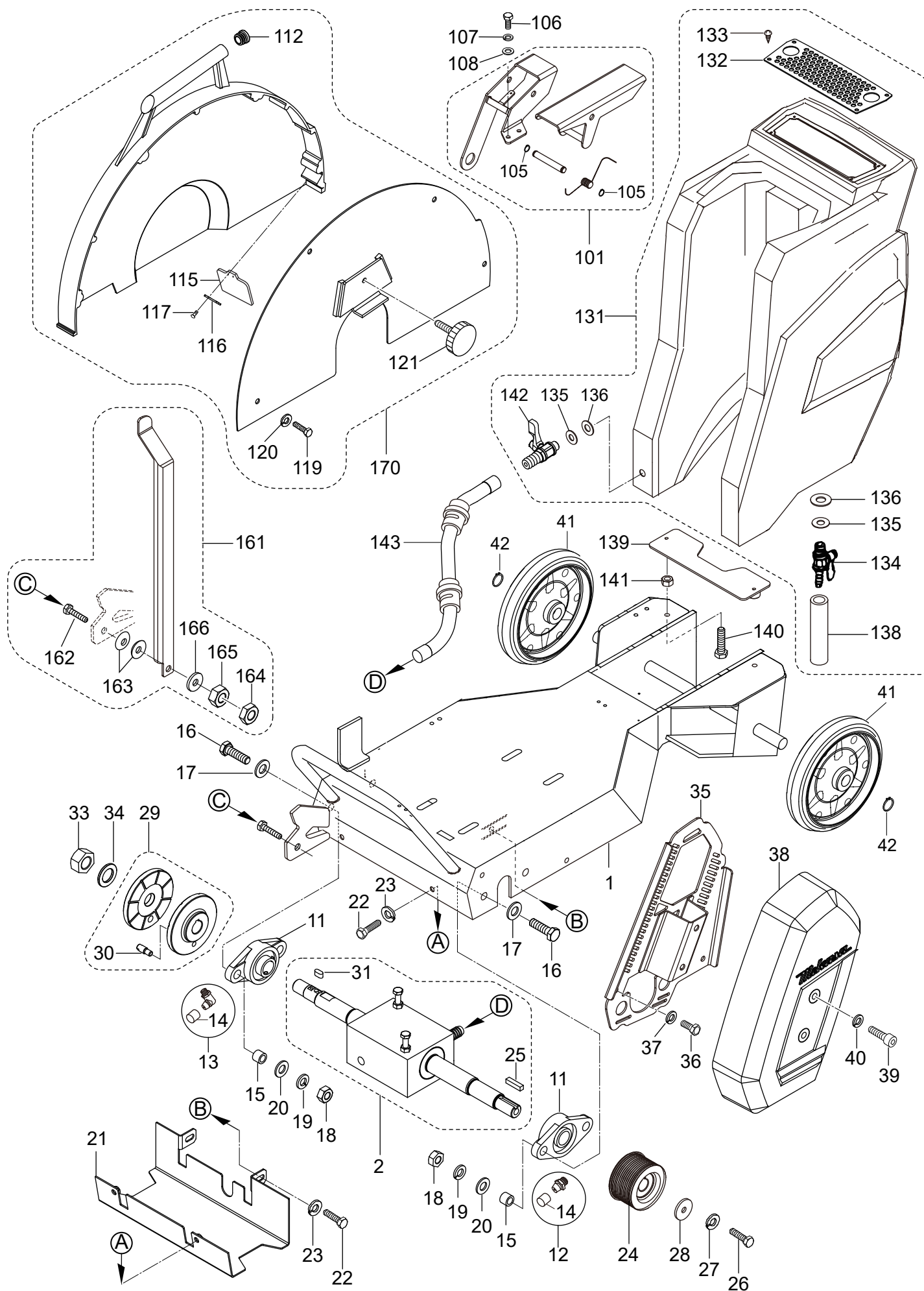
SS : Not available after stock run out.

(The contents of this parts catalog are subject to change without notice.)

MCD-T18H-PLUS

BASE

6KX0



MCD-T18H-PLUS

BASE

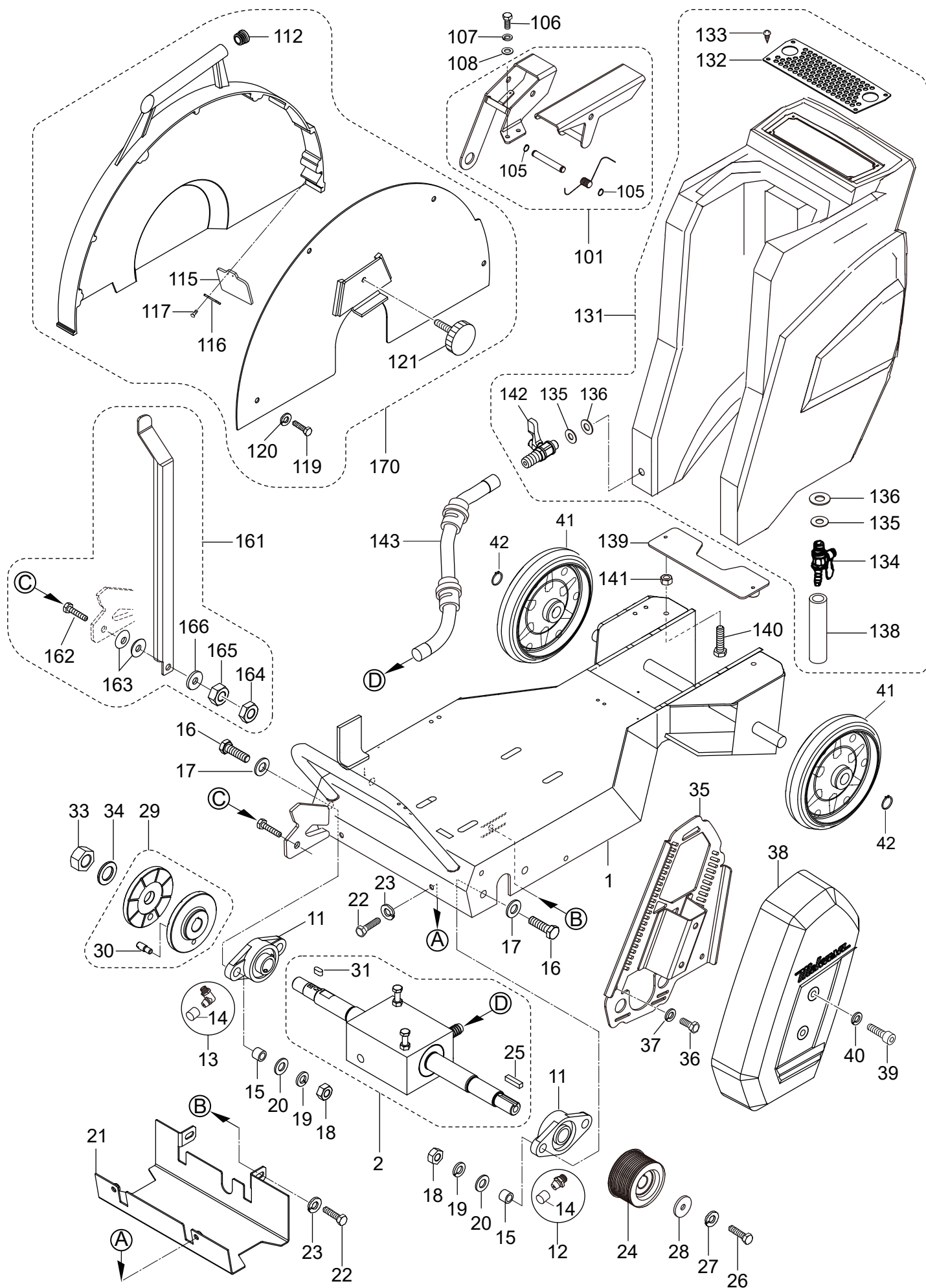
** 6KX **

REF NO.	PART NO.	PART NAME	Q' TY	MRK	MK2	REMARKS
1	6211-23011-GR	BASE (H) /GR/T18	1		0JH	
1	6211-23011-OR	BASE (H) /OR/T18	1		0JH	
2	6219-10170	BLADE SHAFT AY/MCD-T18H PLUS	1		0JH	
11	0489-10340	PILLOW BLOCK UCFL205JN1	2			
12	9590-10340	GREASE FITTING_A-1/4-28UNF_CAP	1			
13	9590-10350	GREASE FITTING_C-1/4-28UNF_CAP	1			
14	9590-10310	CAP, GREASE FITTING	2			
15	9524-10620	COLLAR 10.5X16.0X12.5	4			
16	0012-21030	BOLT 10X30 T	4			
17	0311-10160	PW M10	4			
18	0203-10080	NUT M10	4			
19	0302-10250	SW M10	4			
20	0311-10160	PW M10	4			
21	6213-59520	BLADE SHAFT, COVER/T18	1			
22	0012-20815	BOLT 8X15 T	4			
23	0302-08200	SW M8	4			
24	6214-73030	BLADE PULLEY/T18	1			
25	9514-01920	KEY 7X7X30	1			
26	0012-21025	BOLT 10X25 T	1			
27	0302-10250	SW M10	1			
28	9524-04250	WASHER 11X40X4	1			
29	6219-10140	FLANGE SET/METRIC/T18H PLUS	1		0JH	
29	6219-10150	FLANGE SET/INCH/T18H PLUS	1		0JH	
30	6214-73540	KNOCK PIN/T18	1			
31	9514-00820	KEY 7X7X14	1			
33	6214-73560	NUT M20 (L) /T18	1			
34	9524-10610	WASHER 21X35X3.0	1		SS!	0311-20320
35	6213-57390	BELT COVER (IN) /T18	1			
36	0012-20815	BOLT 8X15 T	2			
37	0302-08200	SW M8	2			
38	6211-22950	BELT COVER (OUT) /T18	1			
39	0015-21020	SOCKET HEAD BOLT 10X20 T	2			
40	0302-10250	SW M10	2			
41	9594-10730	WHEEL 200X40-B46	2			
42	0802-00200	STOP RING S-20	2			
101	6219-10120	BRAKE AY/T18	1			
105	0802-00100	STOP RING S-10	2			
106	0012-20615	BOLT 6X15 T	2			
107	0302-06150	SW M6	2			
108	0311-06100	PW M6	2			
112	9594-10600	PIPE CAP D22	1			
115	6214-73490	RUBBER COVER/T18	1			
116	6214-73810	RUBBER, LOCK PLATE/T18	1			
117	0091-10032	PAN HEAD SCREW 4X8	2			
119	0012-20815	BOLT 8X15 T	4			
120	0302-08200	SW M8	4			
121	9524-10960	KNOB BOLT 45/M10	1			
131	6219-10050	WATER TANK AY/T18	1		0JH	
132	6213-57460	STRAINER/T18	1			
133	0940-10092	TAPPING SCREW 5X16	4			

MCD-T18H-PLUS

BASE

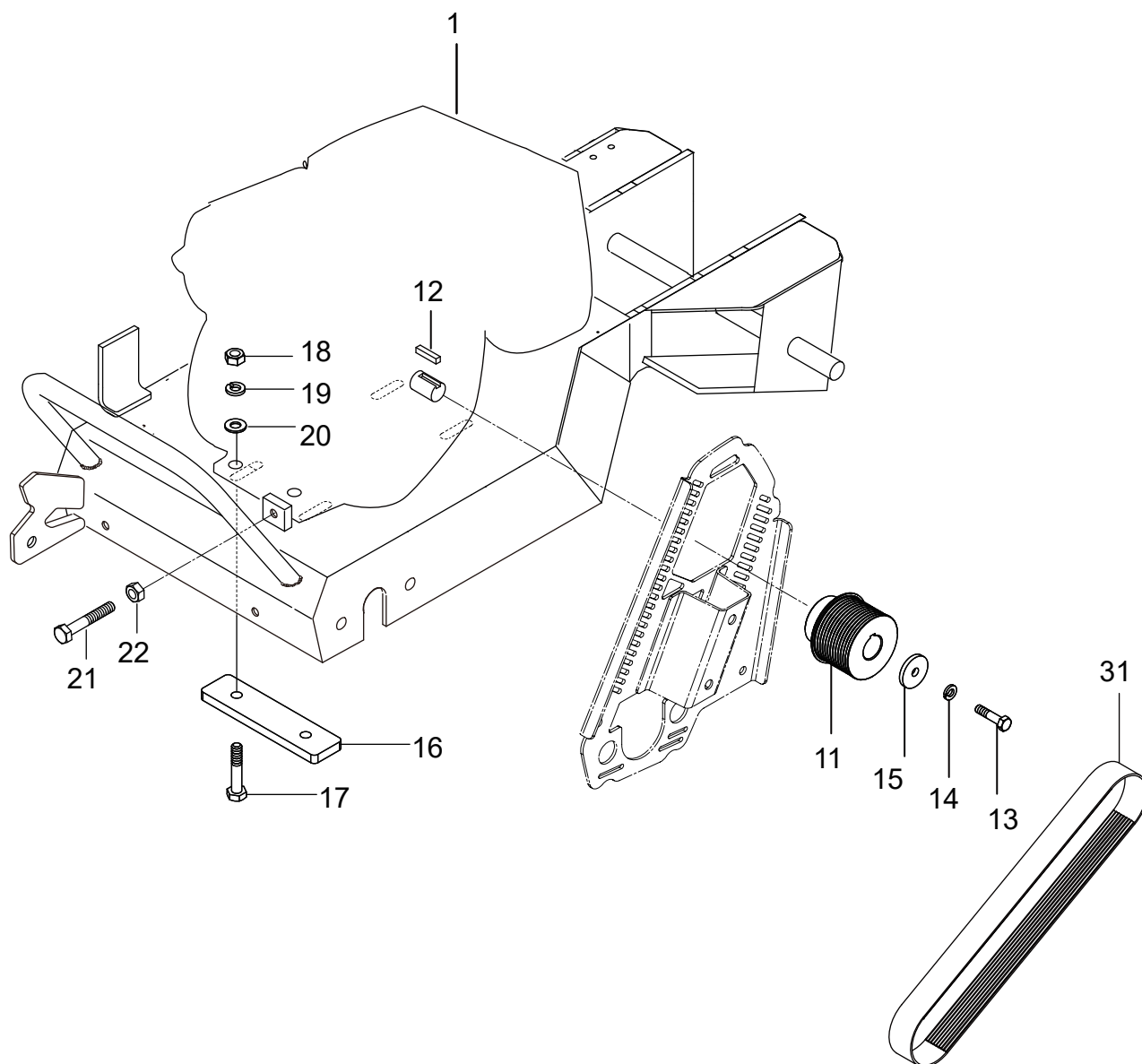
6KX0



BASE

MRK	MK2	REM
-----	-----	-----

[illegible]



ENGINE

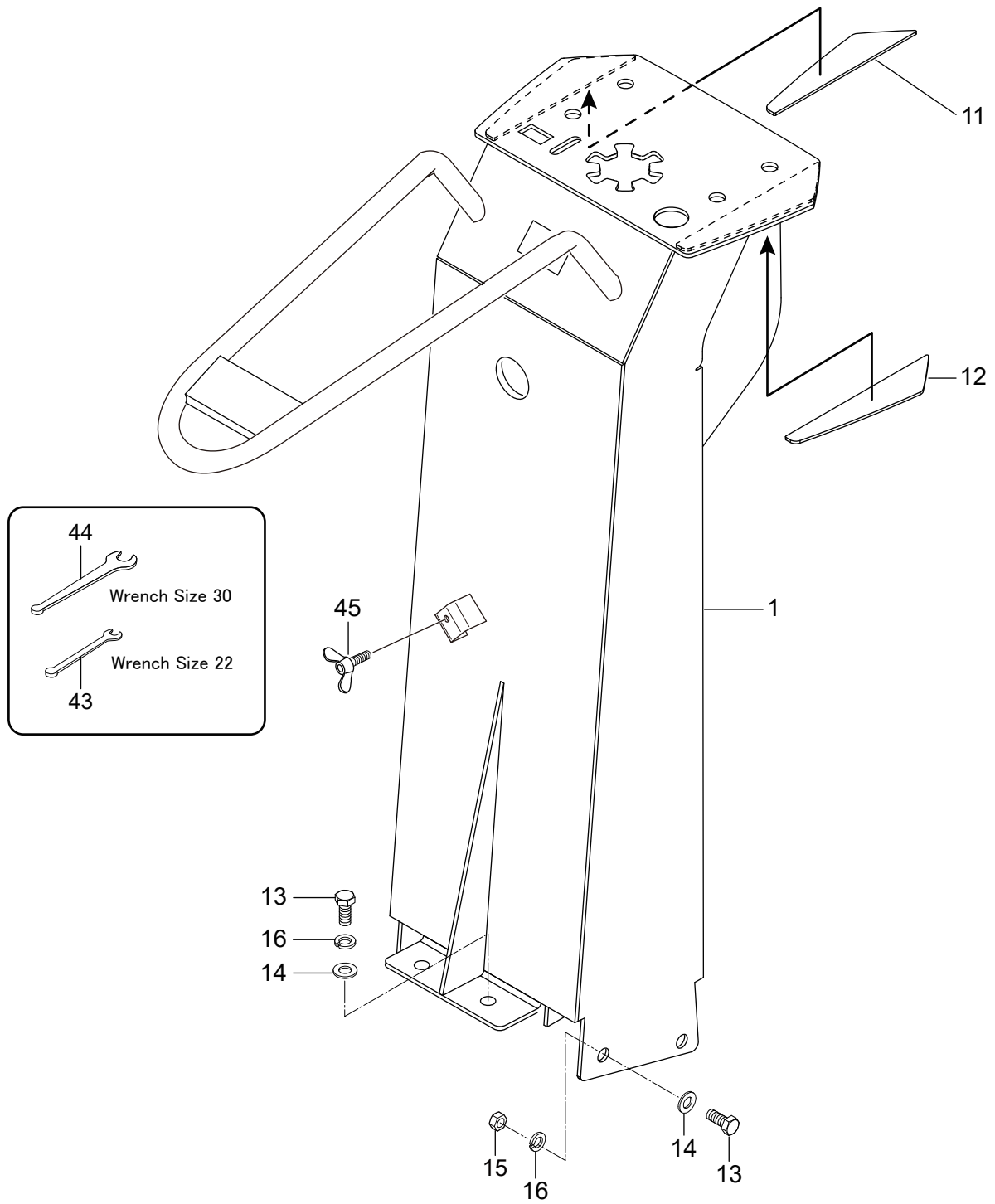
**** 6JV ****

[illegible]

MCD-T18H, MCD-T18H-PLUS

FRAME

6JW0



FRAME

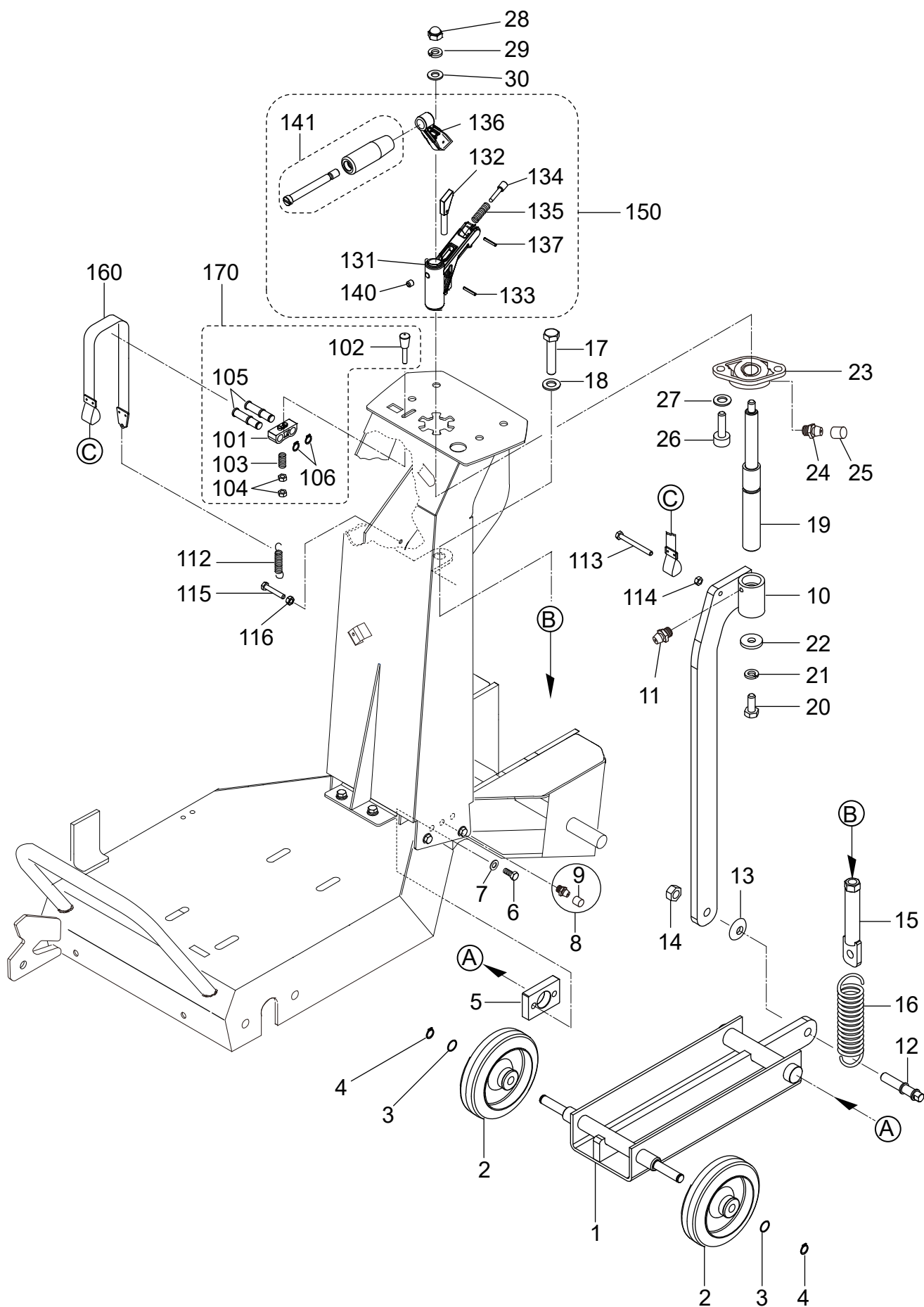
** 6JW **

[illegible]

MCD-T18H, MCD-T18H-PLUS

LIFTING

6JX0



MCD-T18H-PLUS

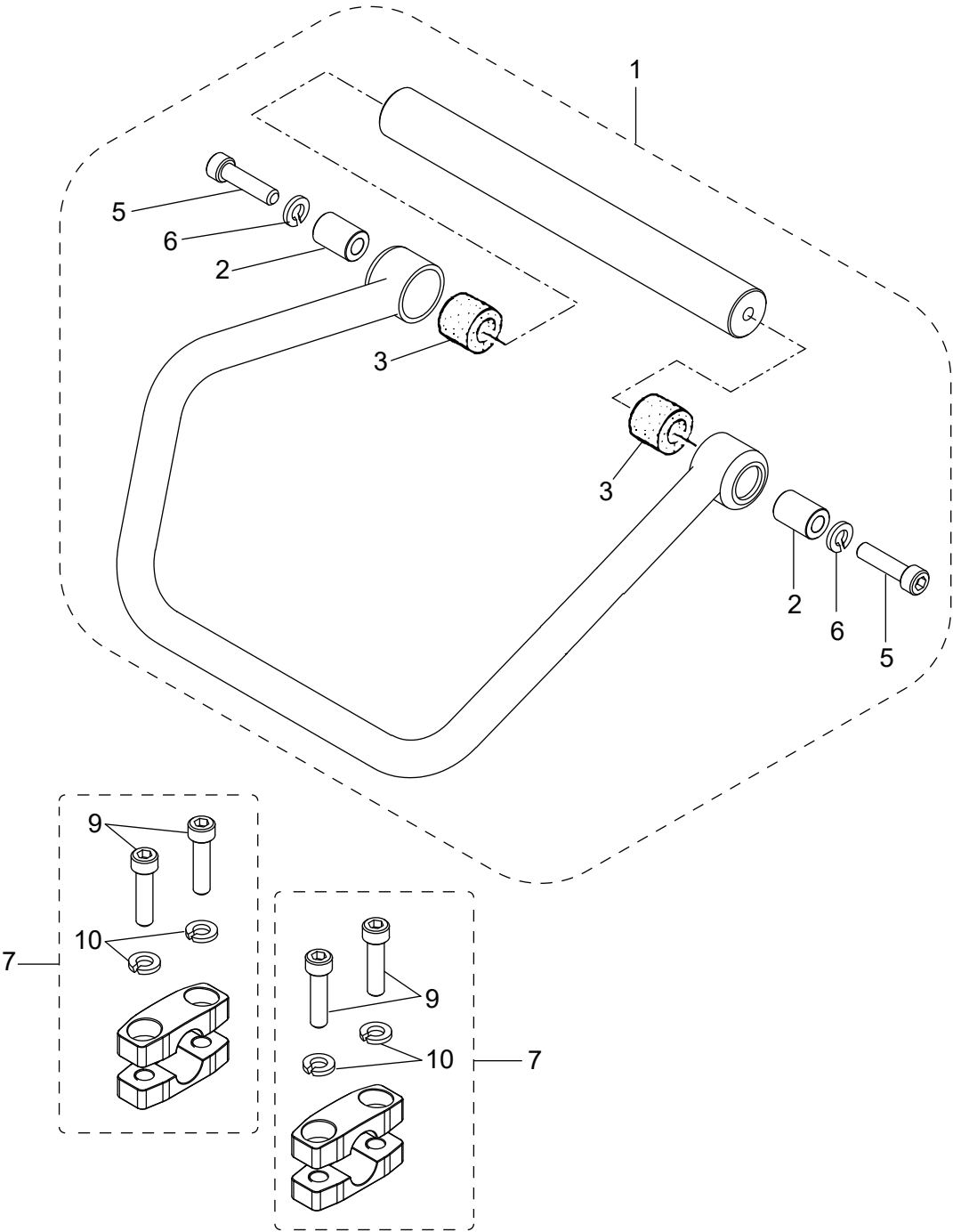
LIFTING

**** 6JX ****

REF NO.	PART NO.	PART NAME	Q' TY	MRK	MK2	REMARKS
1	6213-57410	FRAME, FRONT WHEEL/T18	1			
2	9594-10740	WHEEL 130X35-B40	2			
3	0502-00100	O-RING P-10	2			
4	0802-00120	STOP RING S-12	2			
5	6214-73530	SHAFT HOLDER/T18	2			
6	0012-21020	BOLT 10X20 T	4			
7	0302-10250	SW M10	4			
8	3510-10050	GREASE FITTING A-MT6X1	2			
9	9590-10310	CAP, GREASE FITTING	2			
10	6213-57420	ELEVATOR SHAFT/T18	1			
11	3510-10050	GREASE FITTING A-MT6X1	1			
12	6214-73620	ELEVATOR COM, BOLT/T18	1			
13	0322-12250	CONICAL SPRING WASHER M12	1			
14	0203-12100	NUT M12	1			
15	6214-73800	SPRING HOLDER/T18	1			
16	6214-73710	ELEVATOR, SPRING/T18	1			
17	0018-21252	BOLT 12X60 T, WHOLE THREAD	1			
18	0311-12230	PW M12	1			
19	6213-57240	ELEVATOR SHAFT/T18	1			
20	0012-21025	BOLT 10X25 T	1			
21	0302-10250	SW M10	1			
22	9524-01660	WASHER 103045	1			
23	0489-10270	PILLOW BLOCK ASFB203	1			
24	3510-10050	GREASE FITTING A-MT6X1	1			
25	9590-10310	CAP, GREASE FITTING	1			
26	0015-20820	SOCKET HEAD BOLT 8X20 T	2			
27	0339-10320	SW M8(D13)	2			
28	0221-31008	CAP NUT M10	1			
29	0302-10250	SW M10	1			
30	0311-10160	PW M10	1			
101	6214-74500	GAUGE, KNOB STAY/T18	1		SS!SD	
102	6214-73590	GAUGE KNOB/T18	1		!SD	
103	9594-10692	COIL SPRING/T18	1		S!6194-69550	
104	0203-06050	NUT M6	2			
105	6214-73600	TURN, GAUGE SHAFT/T18	2		SS!SD	
106	0802-00100	STOP RING S-10	2			
112	9594-10691	TENSION SPRING/T18	1			
113	0012-20652	BOLT 6X60 T	1			
114	0203-06050	NUT M6	1			
115	0012-20635	BOLT 6X35 T	1			
116	0203-06050	NUT M6	1			
131	6213-57970	ELEVATOR HANDLE/T18	1		SS!SD	
132	6214-74490	CAM, LOCK PIN/T18	1		SS!SD	
133	0254-03022	SPRING PIN 3X22	1			
134	6214-73630	CAM, LOCK PIN/T18	1		!SD	
135	9594-10692	COIL SPRING/T18	1		S!6194-69550	
136	6213-57980	ELEVATOR HANDLE COM/T18	1		!SD	
137	0254-03022	SPRING PIN 3X22	1			
140	0992-08008	SOCKET HEAD SCREW 8X8 T	1			
141	6219-10060	GRIP HANDLE AY/T18	1		SS!0J	INCL. 138-139
150	6219-10030	ELEVATOR HANDLE AY/T18	1			INCL. 131-140
160	6219-10010	CUTTING GAUGE AY/T18	1			INCL. 107-111
170	6219-10090	GAUGE KNOB STAY AY/T18	1			INCL. 101-106

MCD-T18H, MCD-T18H-PLUS
HANDLE

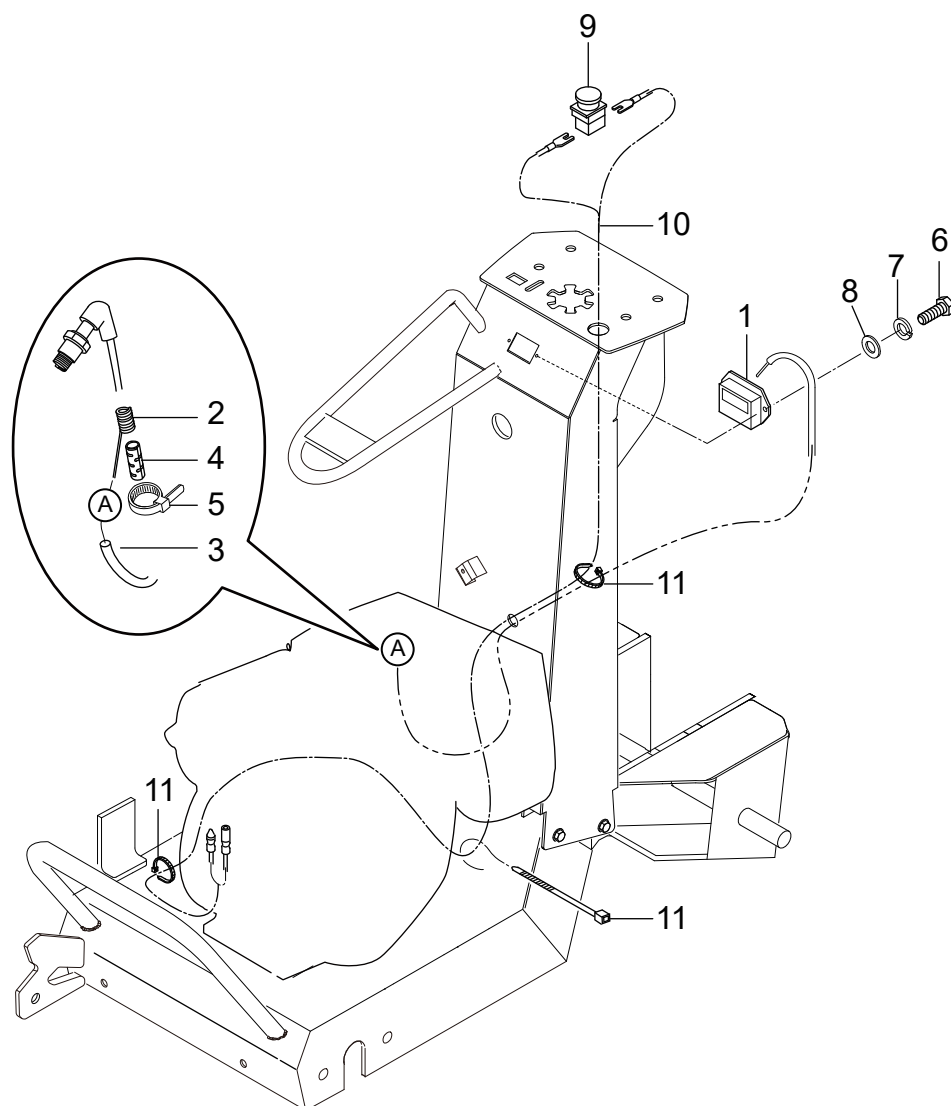
6JY0



HANDLE

**** 6JY ****

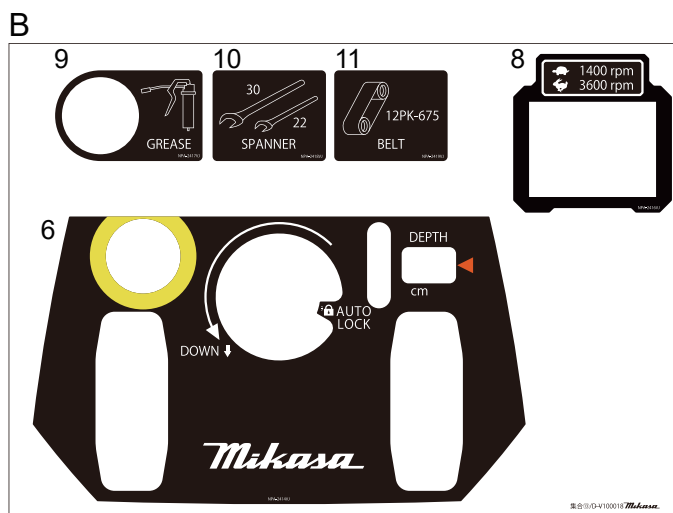
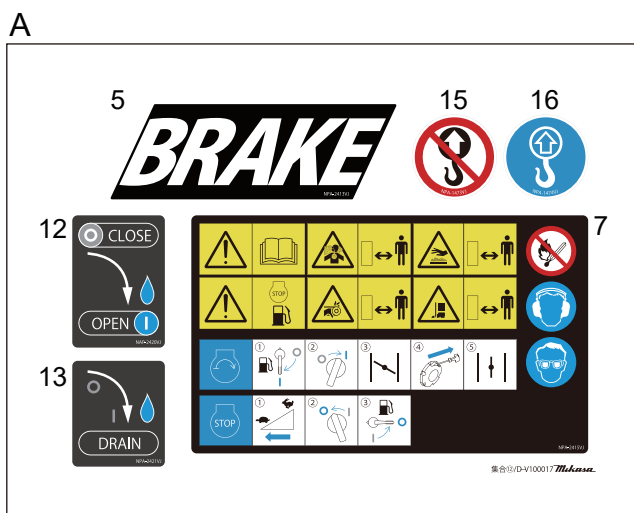
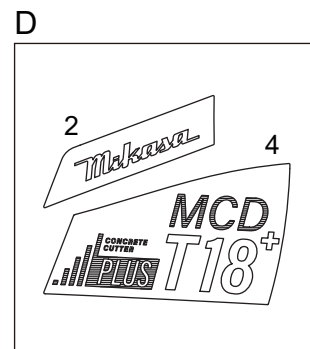
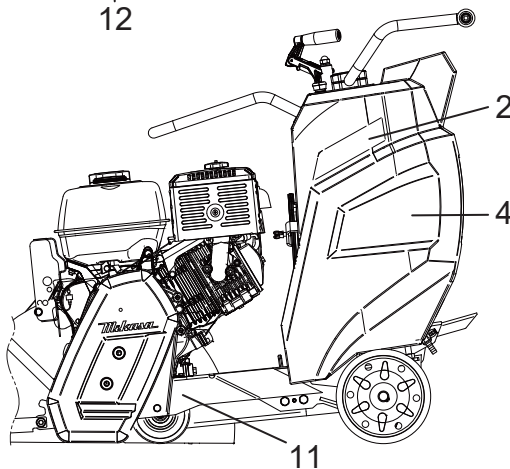
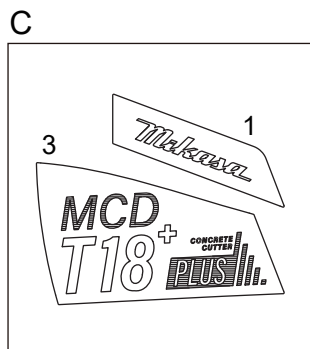
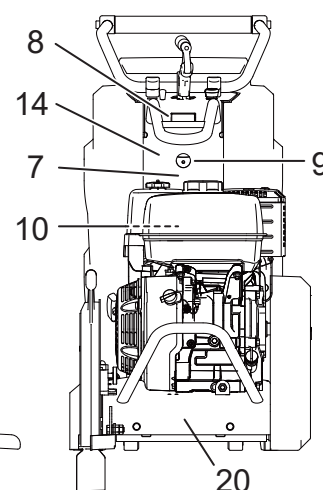
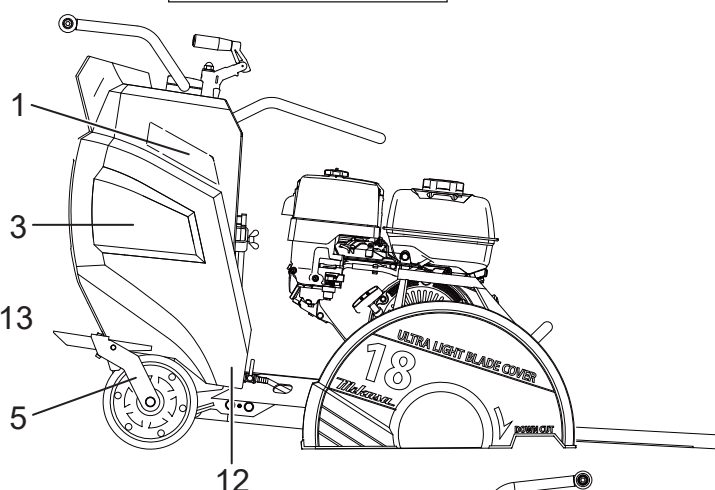
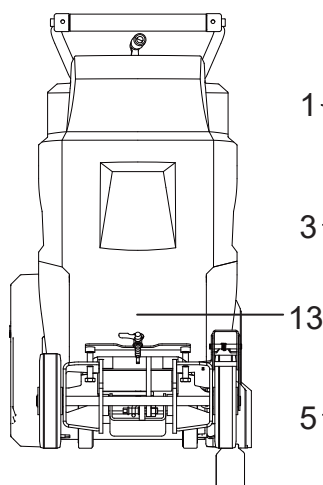
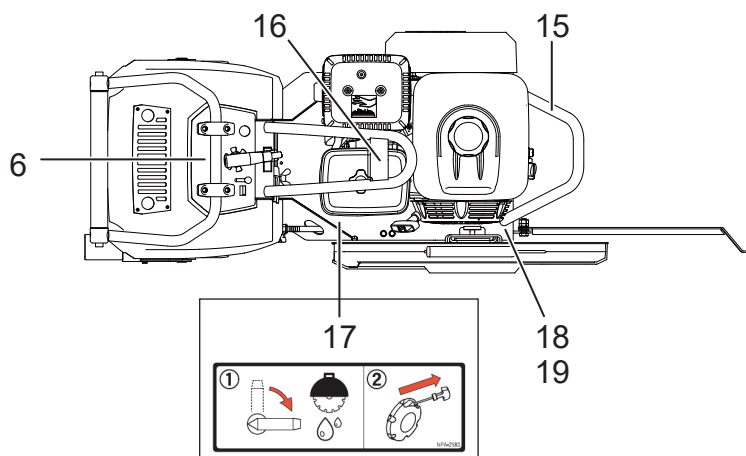
[illegible]



ELECTRIC

**** 6JZ ****

[illegible]



DECALS

[illegible]

Mikasa



Flextool

1956 Dandenong Road, Clayton VIC 3168, Australia

Phone: 1300 353 986

flextool.com.au

ABN 80 069 961 968

This manual summarises our best knowledge of the product based on the information available at the time of publication. You should read this manual carefully and consider the information in the context of how the product will be used. Our responsibility for products sold is subject to our standard terms and conditions of sale.

DISCLAIMER:

Any advice, recommendation, information, assistance or service provided by us in this manual is given in good faith and is believed by us to be appropriate and reliable. However, any advice, recommendation, information, assistance or service provided by us is provided without liability or responsibility PROVIDED THAT the foregoing shall not exclude, limit, restrict or modify the right entitlements and remedies conferred upon any person or the liabilities imposed upon us by any condition or warranty implied by Commonwealth, State or Territory Act or ordinance void or prohibiting such exclusion limitation or modification. The product can be expected to perform as indicated in this manual so long as operation and operational procedures of the individual products are followed as recommended in this manual.

Design and technical specifications may be subject to changes.

© This publication is copyright. All rights are reserved. Flextool is a registered trade mark of Parchem Construction Supplies Pty Ltd. Mikasa is a registered trade mark of Mikasa Sangyo Co. Ltd, used under licence.

FOR MORE INFORMATION
CONTACT US ON 1300 353 986 OR VISIT flextool.com.au

EXCLUSIVE TO

