



SPARE PARTS MANUAL

MIKASA FORWARD PLATE COMPACTOR MVC-F80H



Version 3.0 (February 2024)

FOR MORE INFORMATION
CONTACT US ON 1300 353 986 OR VISIT flextool.com.au

EXCLUSIVE TO



PARTS REMARK INDEX

How to read the marks and remarks used in this parts book.

Section 1 : Explanation of Code Use In “MRK” Column

OO : Interchangeable between the new part and the old one.

XX : Not Interchangeable between new and old.

OX : New part is usable for the old machine but the old part is not usable for the new machine.

XO : The old part is usable for the new machine but the new part is not usable for the old machine.

Note : In case of the lack of interchangeability between the new part and old part, a new part may be used by replacing all other parts found in the assembly. In this case, refer to section 2 for instruction on identifying other parts involved in a new assembly.

AD : Newly established(added)

DC : Suspended(discontinued)

NC : Part number changed

QC : Quantity used has been changed

NS : Not supplied individually but supplied in an assembly or a group.

AS : Special part designed to allow interchangeability between new and old part.

CR : Correction

Section 2 : Items Found In “Remark” Column

Serial Numbers — Where indicated, this indicates a serial number range (inclusive) where a particular part is used.

Model Number — Where indicated, this shows that the corresponding part is utilized only with this specific model number or model number variant.

or * : All parts with the same number following # or * belong to the same assembly. this part cannot be interchanged individually with any other assemblies to replace an old part (indicated by #), with a new part(indicated by *), then all other parts of that assembly must be replaced with new ones.

Note : If more than one of the same reference number is listed, the last one listed indicates newest(or latest)part available.

Section 3: Example

REF NO.	PART NO.	PART NAME	QTY	MRK	REMARKS
457(1)	5122-09230	Hinge Metal, Upper/24g	1		-1070 #3 (5)
457(2)	5072-09420	Hinge Metal, Upper M16	1	OX(3)	U1071-(6)*3(7)

(1) Old part

(2) New part

(3) New part usable with old machine, but old part not usable with new machine (reference section 1).

(4) Old part number is used through this machine serial number.

(5) Old part, used in an assembly with other parts marked with #3. To use this part on a new machine, all other parts in this assembly must be replaced with old ones.

(6) New part put into use starting with this serial number and is still current.

(7) New part used in an assembly with other parts marked *3, to use this part as a replacement for an old part, all other *3 marked parts must be changed at the same time.

Section 4: Items Found In “MK2” Column

(only for suspended products)

! OO (“OO” is shown in figure) : The part shown in lower line is supplied.

! SD : Not available due to termination of production.

! NS : Not supplied individually, but supplied in an assembly or a group.

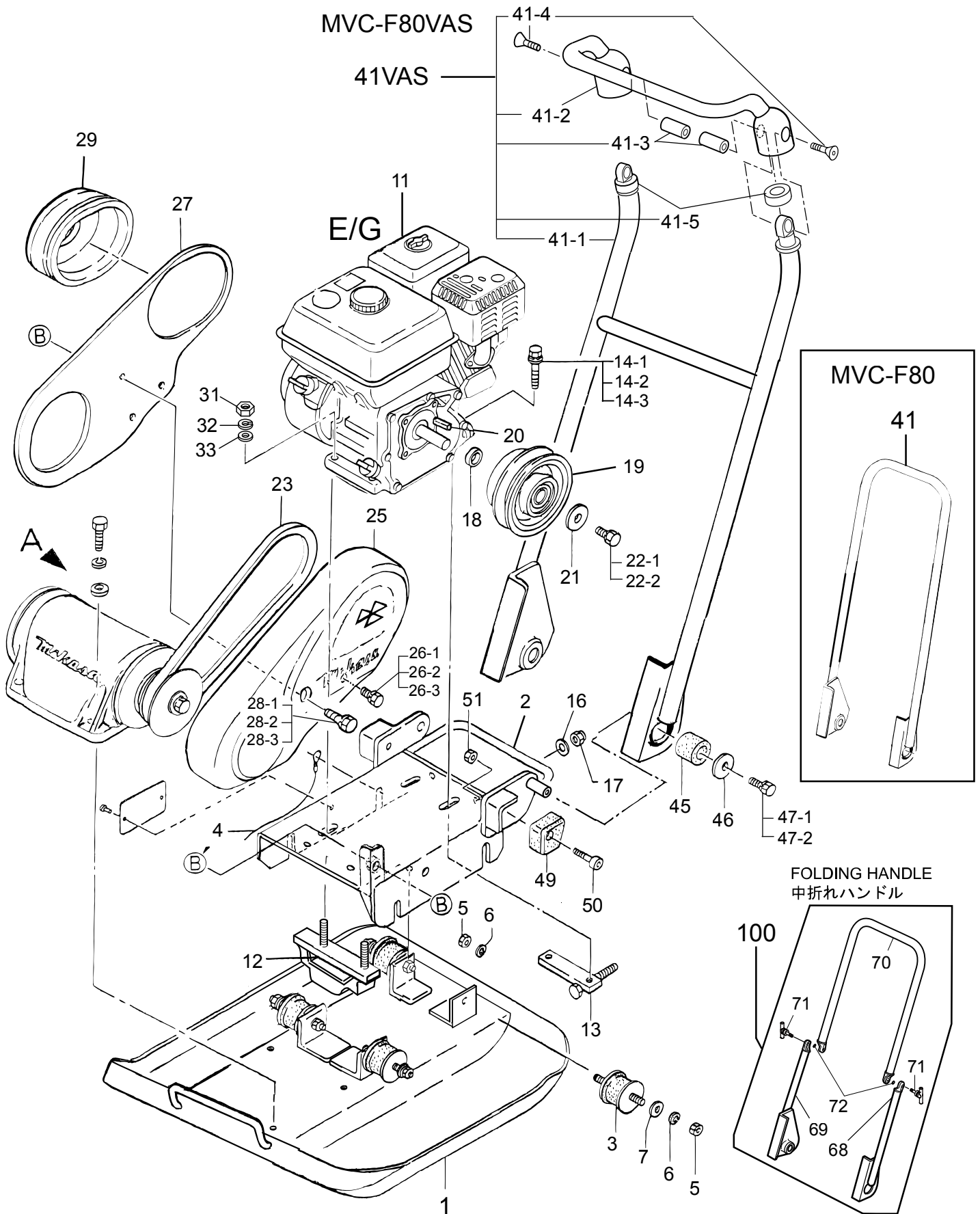
! PD : Supplied as unit product.

SS : Not available after stock run out.

(The contents of this parts catalog are subject to change without notice.)

MVC-F80 / F80 VAS
BODY / 本体

4NT1



MVC-F80/F80VAS

2021/10/22

BODY

** 4NT **

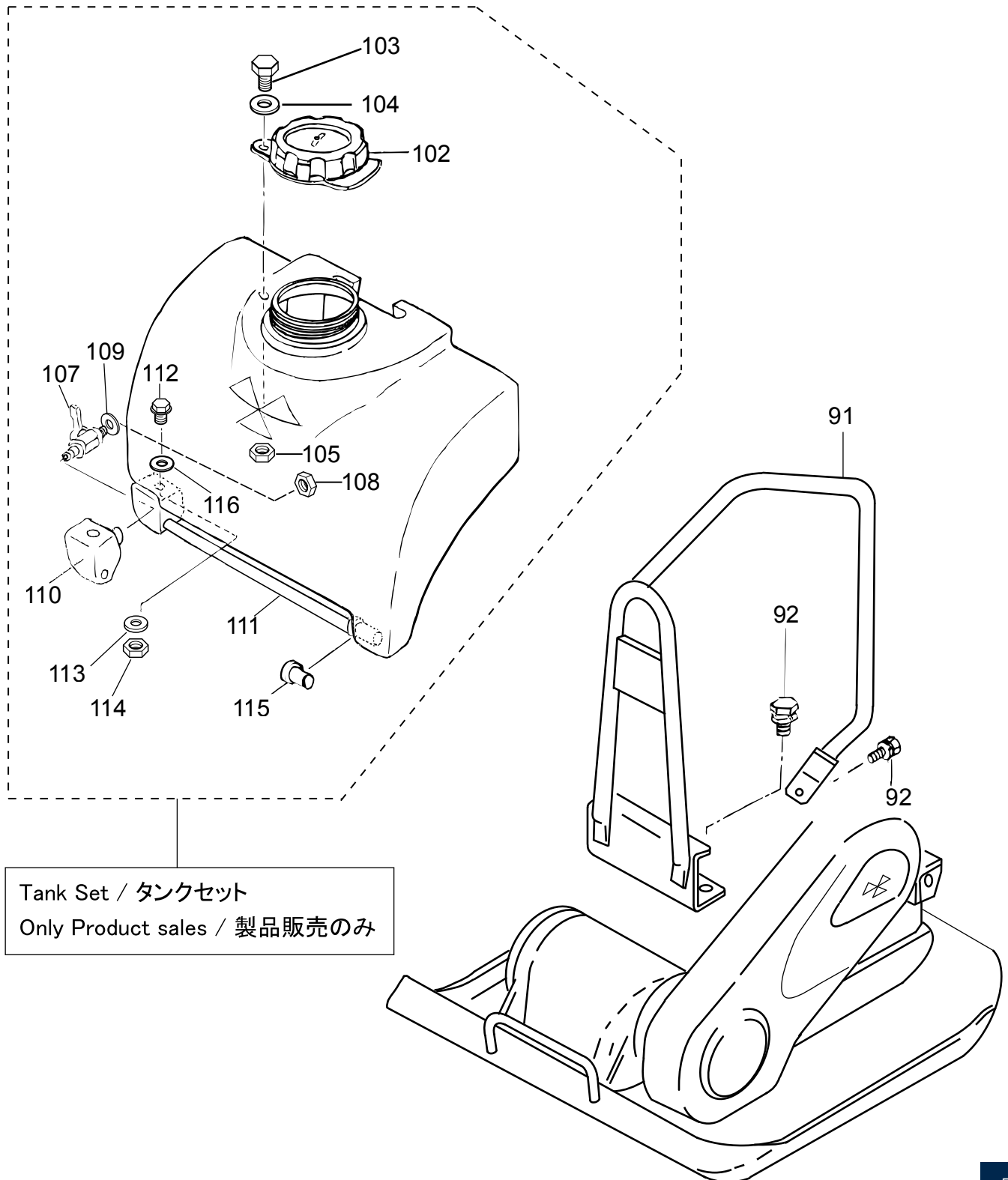
REF NO.	PART NO.	PART NAME	Q' TY	MRK	MK2	REMARKS
1	4181-18530-GR	VIB. PLATE 570X450/F80-GR	1			GREEN
1	4181-18539-OR	VIB. PLATE 570X450/F80-OR	1			ORANGE
2	4182-19370-GR	BASE/NEW CARRY/MVC-F70/80-GR	1			GREEN
2	4182-19379-OR	BASE/NEW CARRY/MVC-F70/80-OR	1			ORANGE
3	9390-10400	SHOCK ABSORBER D45X41H	4			
4	9594-04350	EARTH WIRE	1			
5	0203-10080	NUT M10	8			
6	0302-10250	SW M10	8			
7	0311-10160	PW M10	4			
11	9122-16016	ENGINE AY/GX160UT2-SMXE	1			GX160
11	9122-16031	ENGINE/GX160UH2SMXE/!SD	1		!SD	GX160
12	4184-57750	BOLT, ENGINE/MVC-F70	1			
13	4134-36870	ENGINE NUT, REAR /MVC-60	1			
14	0012-20845	BOLT 8X45 T	2			
14	0302-08200	SW M8	2			
14	0311-08160	PW M8	2			
16	0311-08160	PW M8	1			
17 -1	0227-10809	NYLON NUT M8	1			
18 -2	4084-21270	CLUTCH SPACER 20. 2X25X9. 4	1			
19 -3	4133-32920	CLUTCH AY S20-A1-124/EY20	1			
20	9514-01740	KEY 5X5X20	1			
21	9524-00130	WASHER 9304	1			
22	0012-20820	BOLT 8X20 T	1			
22	0302-08200	SW M8	1			
23	0701-00312	V-BELT RPF-3310	1			
25	4182-16465-GR	BELT COVER / MVC-F60, F70	1			GREEN
25 -1	4182-16469-OR	BELT COVER / MVC-F60, F70	1			ORANGE
26 -2	0012-21035	BOLT 10X35 T	1			
26	0302-10250	SW M10	1			
26	0311-10160	PW M10	1			
27	4182-16480	BELT COVER (IN) /MVC-F60, 70	1			
28 -1	0012-21053	BOLT 10X65 T	1			
28 -2	0302-10250	SW M10	1			
28 -3	0311-10160	PW M10	1			
29	4183-43420	COVER SEAL (E/G) /F60, F70	1			
31 -1	0203-08060	NUT M8	2			
32 -2	0302-08200	SW M8	2			
33 -3	0311-08160	PW M8	2			
41	4132-16251	HANDLE LONG /MVC-60V/OP	1			
41	4189-10120	VAS HANDLE AY/F60	1			VAS
41	4182-17051	VAS HANDLE BODY (NEW) /F60	1			VAS
41	4182-17060	GRIP, VAS HANDLE/MVC-F60	1			VAS
41	4164-59320	HANDLE NUT, VAS HANDLE/88G	2			VAS
41 VAS	0091-20407	SUNK HEAD BOLT 10X20 T	2			VAS
41 -1	4164-59341	RUBBER, VAS HANDLE/MVC-88G	2			VAS
45 -2	4044-33430	RUBBER 20X32X28. 5/52H	2			
46 -3	9524-03450	WASHER 11X35X4. 5	2			
47 -4	0012-21020	BOLT 10X20 T	2			
47 -5	0302-10250	SW M10	2			
49	4134-36720	RUBBER, HANDLE /MVC-60	2			
50	0091-10052	SOCKET HEAD BOLT 8X45 ZN	2			
51 -1	0203-08060	NUT M8	2			
68 -2	4183-57950	HANDLE (LOWER, L) /MVC-F60H	1			FOLDING
69	4183-57960	HANDLE (LOWER, R) /MVC-F60H	1			FOLDING
70	4183-46400	HANDLE (UPPER) /MVC-F60VL	1			FOLDING
71	9594-10490	T-KNOB M10X33L	2			FOLDING
72	0502-00080	O-RING P-8	2			FOLDING
100	4139-10060	FOLDING HANDLE CP/F-SERIE (EXP)	1			FOLDING

4NU1

MVC-F80 / F80 VAS

ACCESSORIES

／ 装備品（フック、散水装置、移動車）



MVC-F80/F80VAS

2021/10/22

ACCESSORIES

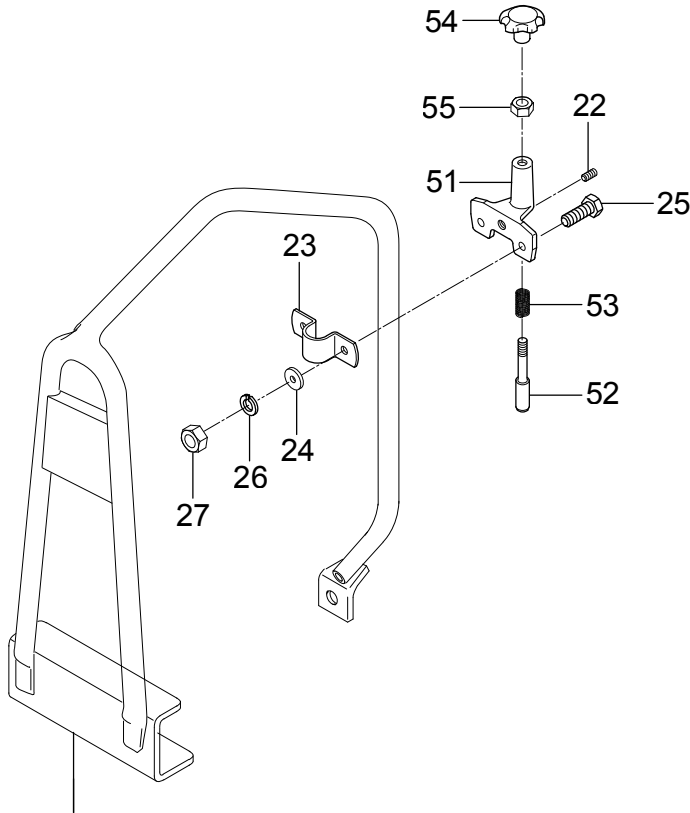
** 4NU **

REF NO.	PART NO.	PART NAME	Q' TY	MRK	MK2	REMARKS
91	4181-18581	GUARD HOOK /MVC-F80	1			
92	0012-21025	BOLT 10X25 T	3			
92	0302-10250	SW M10	3			
102	9543-00343	CAP, WATER TANK(NBR)	1			
103	0012-41030	BOLT 10X30 U	1			
104	0339-10160	PW M10(SUS)	2			
105	0229-10270	NUT M10(SUS)	1			
107	9544-03241	COCK PT1/4, BH-1211(AL)/R	1			
108	9594-03790	NUT PS-1/4	1			
109	9534-08270	PACKING 11.5X19.5X1	1			
110	4183-45150	PIPE HOLDER/MVC-F80	1			
111	4183-45160	SPRINKLING PIPE/MVC-F80	1			
112	0017-40825	FLANGE BOLT 8X25 (SUS)	1			
113	0339-10110	PW M8 (SUS)	2			
114	0203-08064	NUT M8 (SUS)	1			
115	4184-59330	RUBBER CAP/MVC-F80	1			
116	9534-07410	PACKING, 8X15X2T	1			

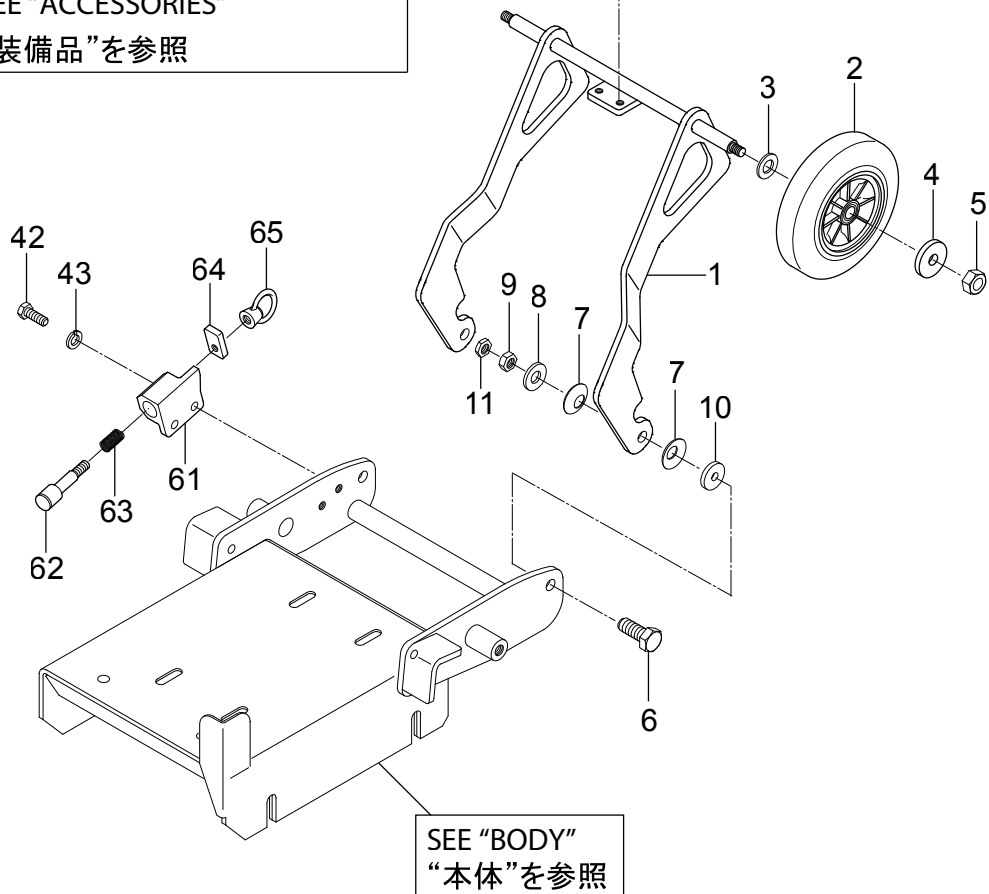
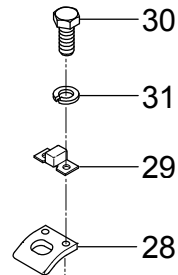
MVC-F80

PBN0

REVOLVING TYPE MOVING CART 回動式移動車



MODEL/型式	REFERENCE PAGE/参照ページ
F80,F80H	SEE "ACCESSORIES" "装備品"を参照



SEE "BODY"
"本体"を参照

MVC-F80/F80VAS

2021/10/22

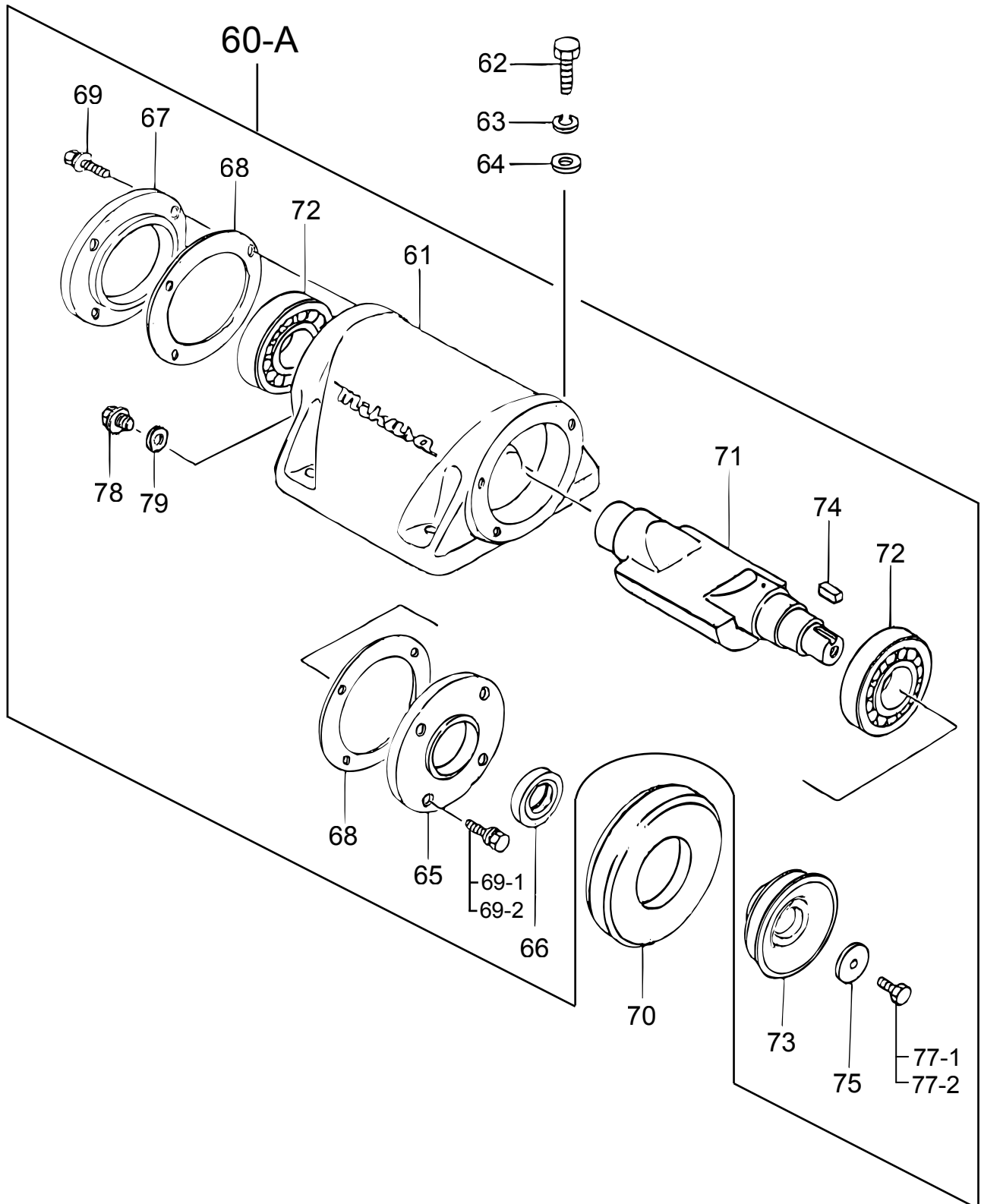
REVOLVING TYPE MOVING CART

** PBN **

REF NO.	PART NO.	PART NAME	Q' TY	MRK	MK2	REMARKS
1	4183-52990	FRAME AXLE, CART /VAS	1			
2	9593-01000	WHEEL 12. 2DX130X42B/T90	2			
3	0311-12230	PW M12	2			
4	9524-02610	WASHER 8. 5X25X3	2			
5	0203-08060	NUT M8	2			
6	0012-21035	BOLT 10X35 T	2			
7	0321-10180	CONICAL SPRING WASHER M10	4			
8	0311-10160	PW M10	2			
9	0203-10080	NUT M10	2			
10	9524-01440	WASHER 11X25X3. 2	2			
11	0204-10060	NUT M10, H=6	2			
22	0982-08008	SOCKET HEAD BOLT 8X8T	1			
23	4184-67140	PIPE, SUPPORT FITING	1			
24	9524-01690	WASHER 6. 5X17X3	2			
25	0012-20620	BOLT 6X20 T	2			
26	0302-06150	SW M6	2			
27	0203-06050	NUT M6	2			
28	4184-67270	LOCK PLATE/V-AXLE/F60	1			
29	4184-67150	STOPPER RUBBER/F60	1			
30	0012-20616	BOLT 6X16 T	2			
31	0302-06150	SW M6	2			
42	0012-20815	BOLT 8X15 T	2			
43	0302-08200	SW M8	2			
51	4183-52500	LOCK BRACKET/F60	1			
52	4184-67260	STOPPER, PIN L-BRACKET	1			
53	4584-50880	SPRING 1. 2-10-29 /MVH-120	1			
54	9594-08900	KNOB M8/F60	1			
55	0204-08050	NUT M8, H=5	1			
61	4183-52520	STOPPER BRACKET/F60	1			
62	4184-67290	STOPPER PIN, HANDLE	1			
63	4184-67160	SPRING/STOPPER/F60	1			
64	4184-67280	STOPPER /S-BRACKT	1			
65	9590-10412	EYE NUT M8	1			

MVC-F80 / F80 VAS
VIBRATOR / 起振体

4NV1



MVC-F80/F80VAS

2021/10/22

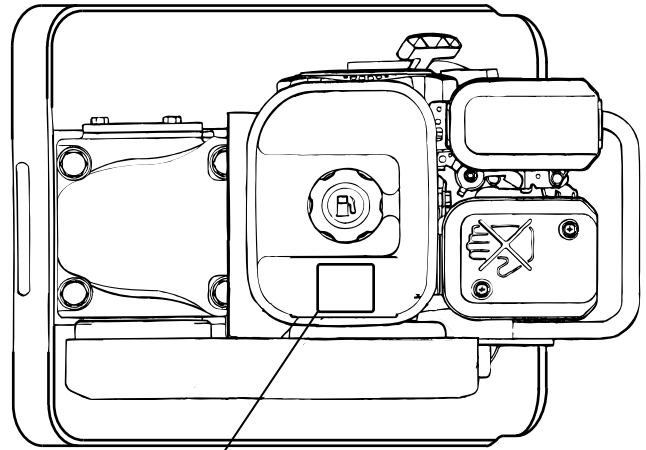
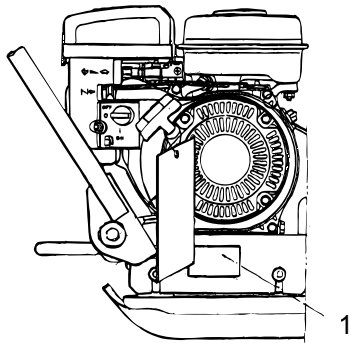
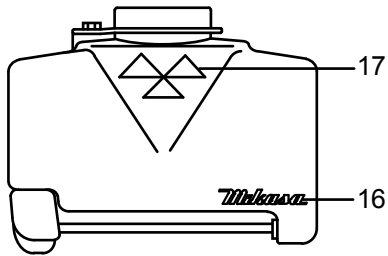
VIBRATOR

** 4NV **

REF NO.	PART NO.	PART NAME	Q' TY	MRK	MK2	REMARKS
60 -A	4189-10110-GR	VIB, CASE ASSY/F80-GR	1			F80/GREEN
60 -A	4189-10119-OR	VIB, CASE ASSY/F80-OR	1			F80/ORANGE
61	4181-17730-GR	VIBRATING CASE/MVC-F60, 70-GR	1			GREEN
61	4181-17739-OR	VIBRATING CASE/MVC-F60, 70-OR	1			ORANGE
62	0012-21445	BOLT 14X45 T	4			
63	0302-14350	SW M14	4			
64	0311-14260	PW M14	4			
65	4184-64310	CASE COVER/PULLEY, NEW/F60	1			
66	0604-03020	OIL SEAL TC-30458	1			
67	4184-56960	CASE COVER/SHUT OFF /F60	1			
68	4184-56971	PACKING/MVC-F60, F70	2			
69	0012-20820	BOLT 8X20 T	8			
69 -1	0302-08200	SW M8	8			
70 -2	4184-64511	COVER SEAL, VIB/F60-F70	1			
71	4183-43630	ECC. ROTOR SHAFT /MVC-F80	1			
72	0404-06307	BEARING 6307C4	2			
73	4184-56981	PULLEY/VIB. -GR/F60, 70	1			GREEN
73	4184-56989	PULLEY/VIB. -OR/F60, 70	1			ORANGE
74	9514-01920	KEY 7X7X30	1			
75	9524-03450	WASHER 11X35X4.5	1			
77	0012-21030	BOLT 10X30 T	1			
77 -1	0302-10250	SW M10	1			
78 -2	9534-05270	PLUG 1/4X14 13L	1			
79	9534-05260	PACKING 1/4 (CU)	1			

MVC-F80 / F80 VAS NAME PLATES

4NW1



45

EXP / EU

Mikasa S3-000343
MVC/MCD : NPA-1473, 1474, 1479
MCD ONLY : NPA-1460, 1481

NPA-1480 : EH/EX/GX

MVC-F80/F80VAS

2021/10/22

NAMEPLATES

** 4NW **

REF NO.	PART NO.	PART NAME	Q' TY	MRK	MK2	REMARKS
1	9202-22620	PLATE, SERIAL NO. /F80H/5CE	1			F80H/5CE
11	9202-10330	DECAL, EC NOISE REQ. LWA105	1			
16	9201-14000	DECAL, MIKASA (125MM) BLACK	1			WATER TANK
17	9201-01410	DECAL, MIKASA MARK 120X60	1			WATER TANK
45	9209-00090	DECAL, SET/MVC-MCD/EXP, EU	1	AD		EXP/EU



Parchem Construction Supplies Pty Ltd

1956 Dandenong Road, Clayton VIC 3168, Australia

Phone: 1300 353 986

flextool.com.au

ABN 80 069 961 968

This manual summarises our best knowledge of the product based on the information available at the time of publication. You should read this manual carefully and consider the information in the context of how the product will be used. Our responsibility for products sold is subject to our standard terms and conditions of sale.

DISCLAIMER:

Any advice, recommendation, information, assistance or service provided by us in this manual is given in good faith and is believed by us to be appropriate and reliable. However, any advice, recommendation, information, assistance or service provided by us is provided without liability or responsibility PROVIDED THAT the foregoing shall not exclude, limit, restrict or modify the right entitlements and remedies conferred upon any person or the liabilities imposed upon us by any condition or warranty implied by Commonwealth, State or Territory Act or ordinance void or prohibiting such exclusion limitation or modification. The product can be expected to perform as indicated in this manual so long as operation and operational procedures of the individual products are followed as recommended in this manual.

Design and technical specifications may be subject to changes.

© This publication is copyright. All rights are reserved. Flextool is a registered trade mark of Parchem Construction Supplies Pty Ltd. Mikasa is a registered trade mark of Mikasa Sangyo Co. Ltd, used under licence.

FOR MORE INFORMATION
CONTACT US ON **1300 353 986** OR VISIT flextool.com.au

EXCLUSIVE TO

