



# SPARE PARTS MANUAL

## MIKASA FORWARD PLATE COMPACTOR MVC-40H



Version 2.0 (November 2022)

FOR MORE INFORMATION  
CONTACT US ON 1300 353 986 OR VISIT [flextool.com.au](http://flextool.com.au)

EXCLUSIVE TO



***Mikasa***

***PLATE COMPACTOR***

**MVC-40H**

***FOR AUSTRALIA***

**PARTS LIST**

**405-09701**

[www.mikasas.com](http://www.mikasas.com)

# PARTS REMARK INDEX

## How to read the marks and remarks used in this parts book.

### Section 1 : Explanation of Code Use In “MRK” Column

OO : Interchangeable between the new part and the old one.

XX : Not Interchangeable between new and old.

OX : New part is usable for the old machine but the old part is not usable for the new machine.

XO : The old part is usable for the new machine but the new part is not usable for the old machine.

Note : In case of the lack of interchangeability between the new part and old part, a new part may be used by replacing all other parts found in the assembly. In this case, refer to section 2 for instruction on identifying other parts involved in a new assembly.

AD : Newly established(added)

DC : Suspended(discontinued)

NC : Part number changed

QC : Quantity used has been changed

NS : Not supplied individually but supplied in an assembly or a group.

AS : Special part designed to allow interchangeability between new and old part.

CR : Correction

### Section 2 : Items Found In “Remark” Column

Serial Numbers - Where indicated, this indicates a serial number range (inclusive) where a particular part is used.

Model Number - Where indicated, this shows that the corresponding part is utilized only with this specific model number or model number variant.

# or \* : All parts with the same number following # or \* belong to the same assembly. this part cannot be interchanged individually with any other assemblies to replace an old part (indicated by #), with a new part(indicated by \*), then all other parts of that assembly must be replaced with new ones.

Note : If more than one of the same reference number is listed, the last one listed indicates newest(or latest)part available.

### Section 3: Example

REF NO.	PART NO.	PART NAME	QTY	MRK	REMARKS
457(1)	5122-09230	Hinge Metal, Upper/24g	1		-1070 #3 (5)
457(2)	5072-09420	Hinge Metal, Upper M16	1	OX(3)	U1071-(6) * 3(7)

(1) Old part

(2) New part

(3) New part usable with old machine, but old part not usable with new machine (reference section 1).

(4) Old part number is used through this machine serial number.

(5) Old part, used in an assembly with other parts marked with #3. To use this part on a new machine, all other parts in this assembly must be replaced with old ones.

(6) New part put into use starting with this serial number and is still current.

(7) New part used in an assembly with other parts marked \* 3, to use this part as a replacement for an old part, all other \* 3 marked parts must be changed at the same time.

### Section 4: Items Found In “MK2” Column

(only for suspended products)

! OO (“OO” is shown in figure) : The part shown in lower line is supplied.

! SD : Not available due to termination of production.

! NS : Not supplied individually, but supplied in an assembly or a group.

! PD : Supplied as unit product.

SS : Not available after stock run out.

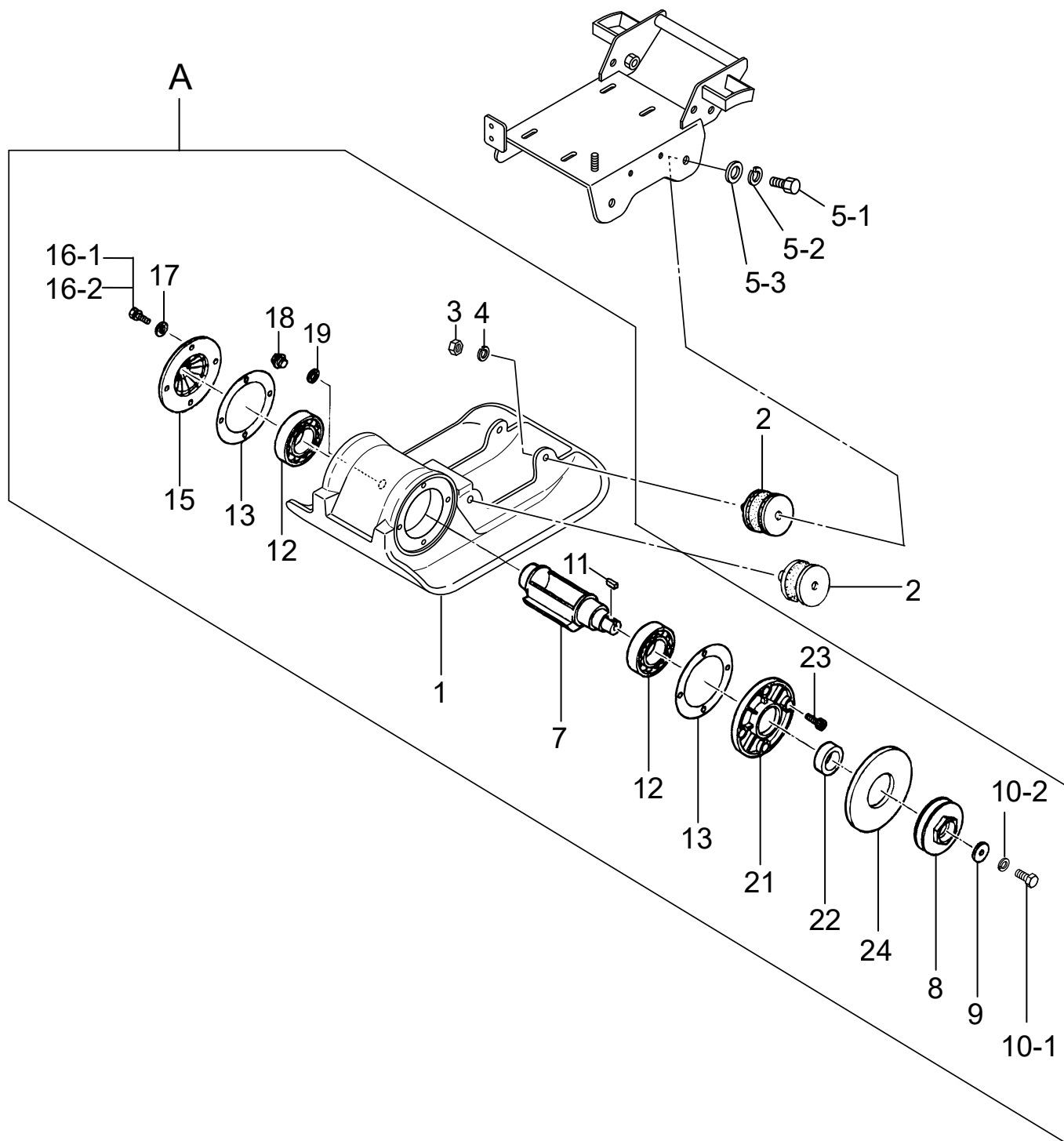
(The contents of this parts catalog are subject to change without notice.)

# MVC-40H/HR

4XK0

## VIBRATING PLATE & VIBRATOR

轉壓盤 & 起振體



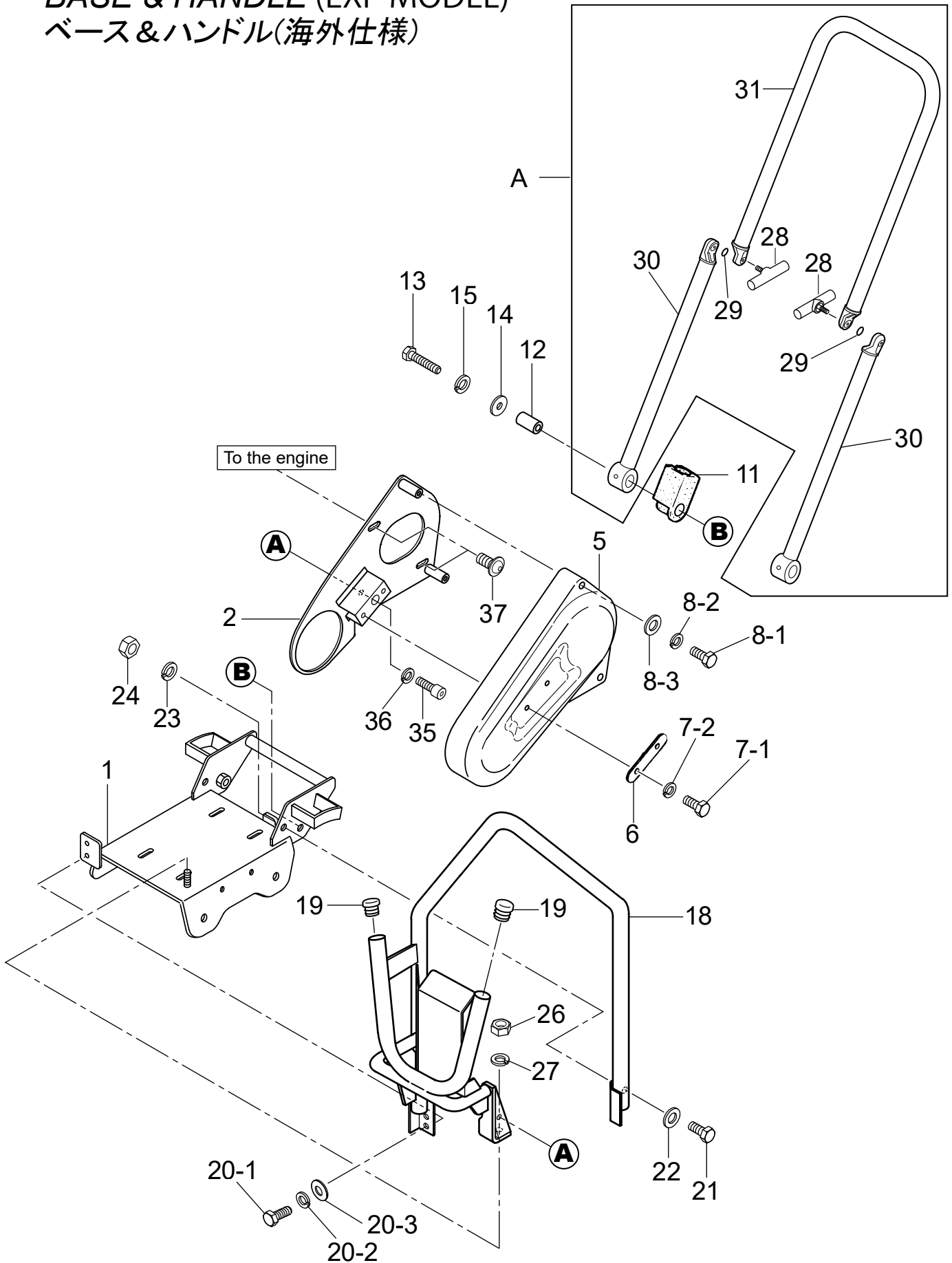


# MVC-40H/HR

4XL0

## BASE & HANDLE (EXP MODEL)

ベース&ハンドル(海外仕様)



## MVC-40H/HR

2022/11/9

## BASE &amp; HANDLE

\*\* 4XL

\*\*

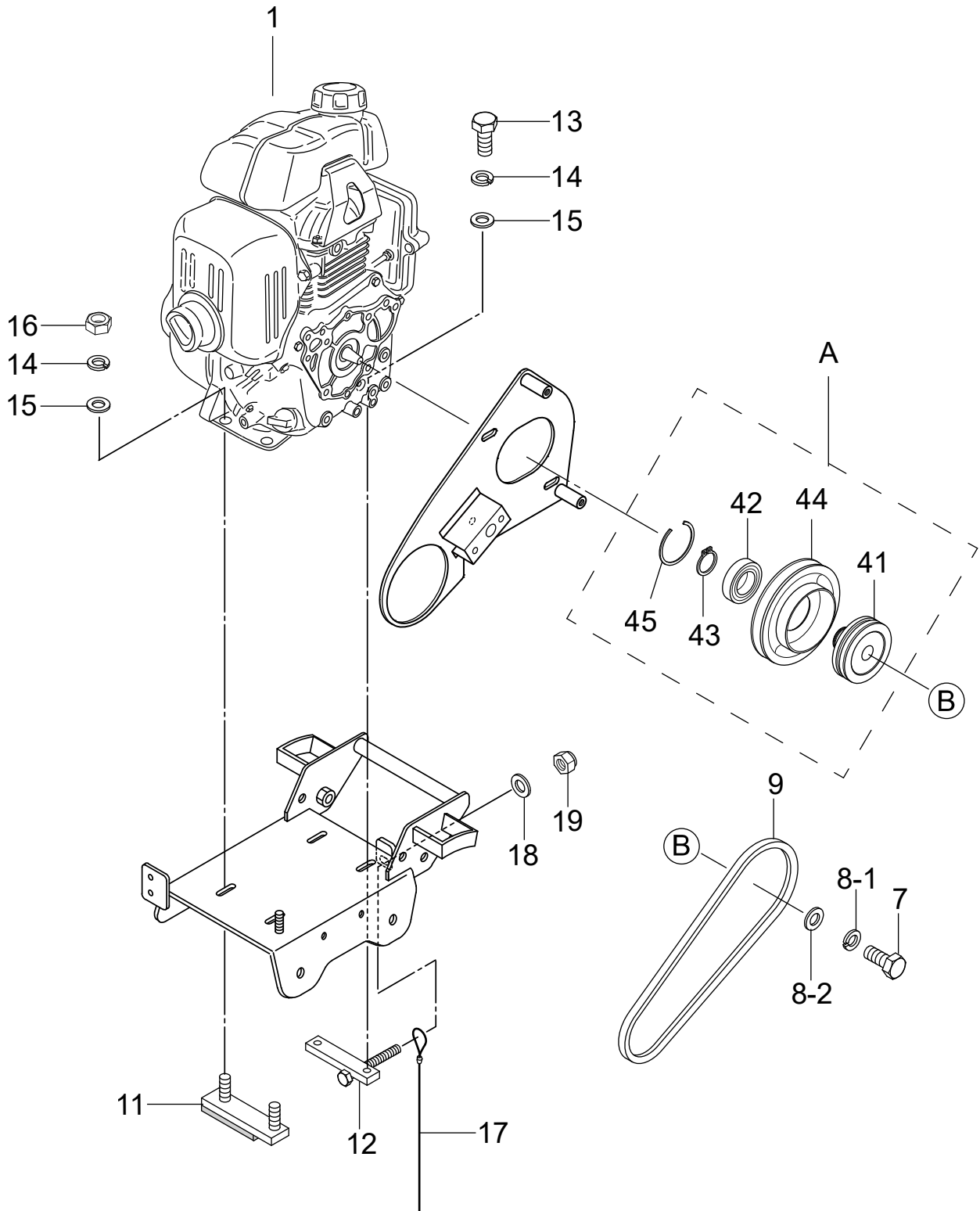
REF NO.	PART NO.	PART NAME	Q' TY	MRK	MK2	REMARKS
A	4179-10030	FOLDING HANDLE CP/40H, EXP	1			EXP
1	4171-22340	BASE /MVC-40H	1			
2	4171-22360	BELT COVER (IN) /MVC-40H	1			
5	4171-22350	BELT COVER /MVC-40H	1			
6	4174-66230	PLATE (BELT COVER) /40GB	1			
7 -1	0012-20820	BOLT 8X20 T	2		**	
7 -2	0302-08200	SW M8	2			
8 -1	0012-20815	BOLT 8X15 T	2		**	
8 -2	0302-08200	SW M8	2			
8 -3	0311-08160	PW M8	2			
11	4174-54411	HANDLE STOPPER /MVC-40G	2			
12	4174-54420	COLLAR 10.5-20-37.5L	2			
13	0012-21052	BOLT 10X60 T	2		**	
14	9524-01660	WASHER 103045	2			
15	0302-10250	SW M10	2			
18	4171-22380	GUARD HOOK /MVC-40H	1			
19	9594-08080	CAP, PIPE (19.1)	2			
20 -1	0012-20820	BOLT 8X20 T	2		**	
20 -2	0302-08200	SW M8	2			
20 -3	0311-08160	PW M8	2			
21	0012-21025	BOLT 10X25 T	1		**	
22	0311-10160	PW M10	1			
23	0302-10250	SW M10	1			
24	0203-10080	NUT M10	1			
26	0203-08060	NUT M8	1			
27	0302-08200	SW M8	1			
28	9594-10490	T-KNOB M10X33L	2			
29	0502-00080	O-RING P-8	2			
30	4173-52430	HANDLE (LOWER) /MVC-40GB	2			
31	4173-55580	HANDLE (UPPER) /MVC-40H	1			
35	0015-20812	SOCKET HEAD BOLT 8X12 T	1		**	
36	0302-08200	SW M8	1			
37	0091-10102	SOCKET HEAD SCREW 8X16	2			

# MVC-40H/HR

4ZO0

ENGINE / エンジン

EXP MODEL / 海外仕様



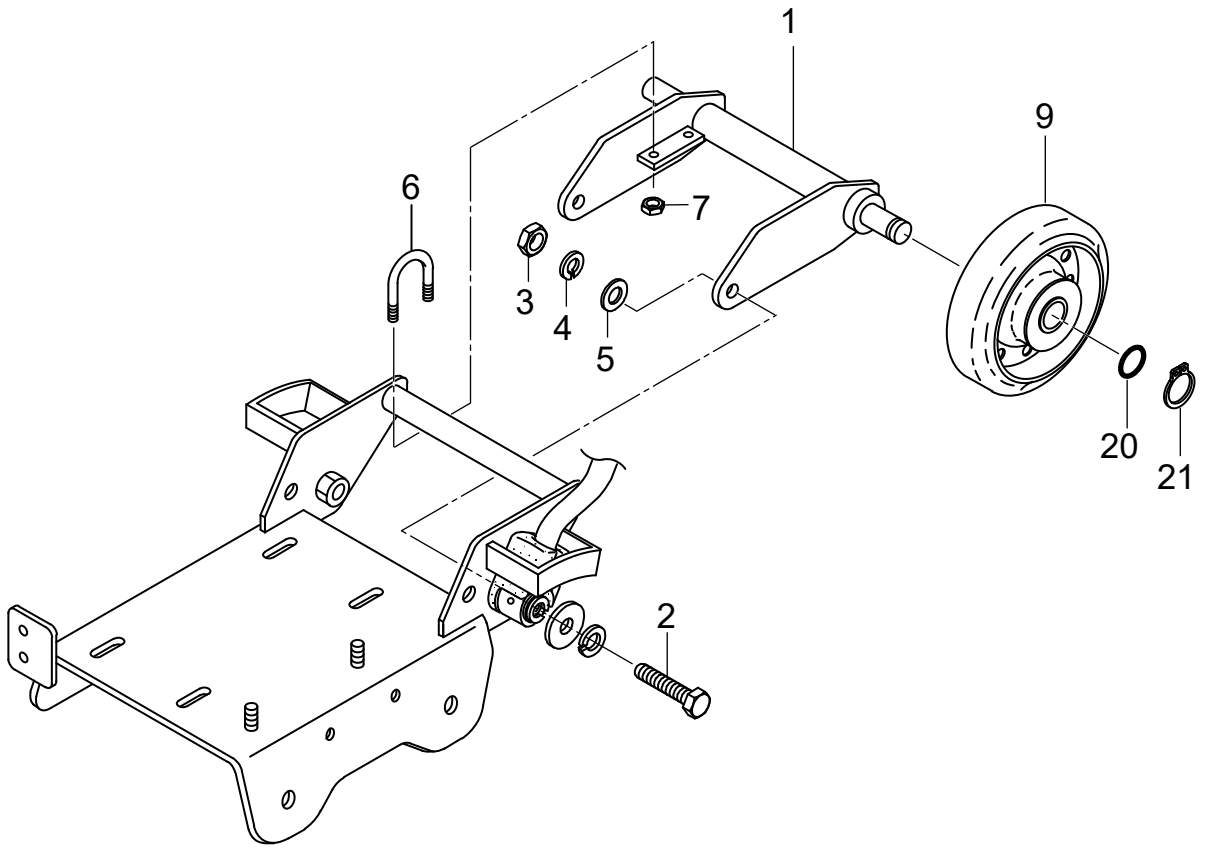




# MVC-40H/HR

CART (EXP) / 固定式移動車 (海外)

PDT0











## **Parchem Construction Supplies Pty Ltd**

1956 Dandenong Road, Clayton VIC 3168, Australia

Phone: 1300 353 986

[flextool.com.au](http://flextool.com.au)

ABN 80 069 961 968

This manual summarises our best knowledge of the product based on the information available at the time of publication. You should read this manual carefully and consider the information in the context of how the product will be used. Our responsibility for products sold is subject to our standard terms and conditions of sale.

### DISCLAIMER:

Any advice, recommendation, information, assistance or service provided by us in this manual is given in good faith and is believed by us to be appropriate and reliable. However, any advice, recommendation, information, assistance or service provided by us is provided without liability or responsibility PROVIDED THAT the foregoing shall not exclude, limit, restrict or modify the right entitlements and remedies conferred upon any person or the liabilities imposed upon us by any condition or warranty implied by Commonwealth, State or Territory Act or ordinance void or prohibiting such exclusion limitation or modification. The product can be expected to perform as indicated in this manual so long as operation and operational procedures of the individual products are followed as recommended in this manual.

Design and technical specifications may be subject to changes.

© This publication is copyright. All rights are reserved. Flextool is a registered trade mark of Parchem Construction Supplies Pty Ltd. Mikasa is a registered trade mark of Mikasa Sangyo Co. Ltd, used under licence.

**FOR MORE INFORMATION**  
CONTACT US ON **1300 353 986** OR VISIT [flextool.com.au](http://flextool.com.au)

**EXCLUSIVE TO**

